

**GROUND-WATER DATA COLLECTED AT SPECIAL-STUDY SITES  
DELAWARE RIVER BASIN NAWQA PROJECT**

The National Water-Quality Assessment (NAWQA) Program of the U.S. Geological Survey is a long-term program with goals to describe the status and trends of water-quality conditions for a large, representative part of the Nation's ground- and surface-water resources; provide an improved understanding of the primary natural and human factors affecting these observed conditions and trends; and provide information that supports development and evaluation of management, regulatory, and monitoring decisions by other agencies.

Assessment activities are being conducted in 53 study units (major watersheds and aquifer systems) that represent a wide range of environmental settings nationwide and that account for a large percentage of the Nation's water use. A wide array of chemical constituents will be measured in ground water, surface water, streambed sediments, and fish tissues. The coordinated application of comparative hydrologic studies at a wide range of spatial and temporal scales will provide information for decision making by water-resources managers and a foundation for aggregation and comparison of findings to address water-quality issues of regional and national interest.

NAWQA study units are divided into three groups that are studied intensively on a rotational basis. Three NAWQA studies have been active in the state of Pennsylvania. The Lower Susquehanna (LSUS) study unit conducted intensive sampling from 1993 through 1995 and the Allegheny and Monongahela River Basins (ALMN) study unit conducted intensive sampling from 1996 through 1998; sampling for both study units has been discontinued. The Delaware River Basin (DELR) study unit conducted intensive sampling from 1999 to 2001, and currently is in a low-intensity phase. The DELR is scheduled to resume intensive sampling in 2009.

Communication and coordination between USGS personnel and other local, State, and federal interests are critical components of the NAWQA Program. Each study unit has a local liaison committee consisting of representatives from key federal, State, and local water resources agencies, Indian nations, and universities in the study unit. Liaison committees typically meet semiannually to discuss their information needs, monitoring plans and progress, desired information products, and opportunities to collaborate efforts among the agencies. Additional information about the NAWQA Program is available through the World Wide Web at <http://water.usgs.gov/nawqa/>

DELR NAWQA low-intensity phase ground-water sample locations are shown on figure 18. Data from the ground-water sample locations are published in the analyses of ground-water samples collected at special-study sites section of this report. A complete list of DELR NAWQA data, including water-quality results from all synoptic and fixed sampling sites, can be found in 'Water Resources Data, New Jersey, Water Year 2003', Water-Data Report NJ-05-3.

**GROUND WATER IN THE CLASTIC BEDROCK WITHIN THE TRIASSIC LOWLANDS SECTION  
OF THE PIEDMONT PHYSIOGRAPHIC PROVINCE**

The following table contains site, water-level, and water-quality data from a network of five domestic wells. The wells are a subset from a network of 30 wells that were established and sampled in 1999 as part of the National Water-Quality Assessment Program in the Delaware River Basin.

The five wells were first re-sampled in 2003 to assess the status and trends of ground-water quality in the clastic bedrock of the Piedmont Physiographic Province (fig. 18). Samples were tested for field parameters, nutrients, major ions, trace elements, dissolved and volatile organic compounds (VOCs), pesticides (including their metabolites), and radioisotopes. The same wells were sampled again in 2005 to continue the assessment of ground-water-quality trends in this hydrogeologic setting. Analytical work on these samples were similar to those collected in 2003 but did not include radioisotopes. Many VOCs and pesticides constituents were not detected at any of the five wells. Data collected during the initial sampling of all 30 wells in 1999 for this network can be found in the annual 'Water Resources Data, Pennsylvania, Water Year 2000', Water Data Report PA-00-1. Data collected in 2003 can be found in the annual 'Water Resources Data, Pennsylvania, Water Year 2003', Water Data Report PA-03-1. For additional information, contact Jeff Fischer at the U.S. Geological Survey, 810 Bear Tavern Road, Suite 206, West Trenton, NJ 08628, 609-771-3953 (email: [fischer@usgs.gov](mailto:fischer@usgs.gov)) or Connie Loper at the U.S. Geological Survey, 215 Limekiln Road, New Cumberland, PA 17070, 717-730-6976 ( email: [caloper@usgs.gov](mailto:caloper@usgs.gov)).

GROUND-WATER DATA COLLECTED AT SPECIAL-STUDY SITES  
 DELAWARE RIVER BASIN NAWQA PROJECT

GROUND WATER IN THE CLASTIC BEDROCK WITHIN THE TRIASSIC LOWLANDS SECTION  
 OF THE PIEDMONT PHYSIOGRAPHIC PROVINCE

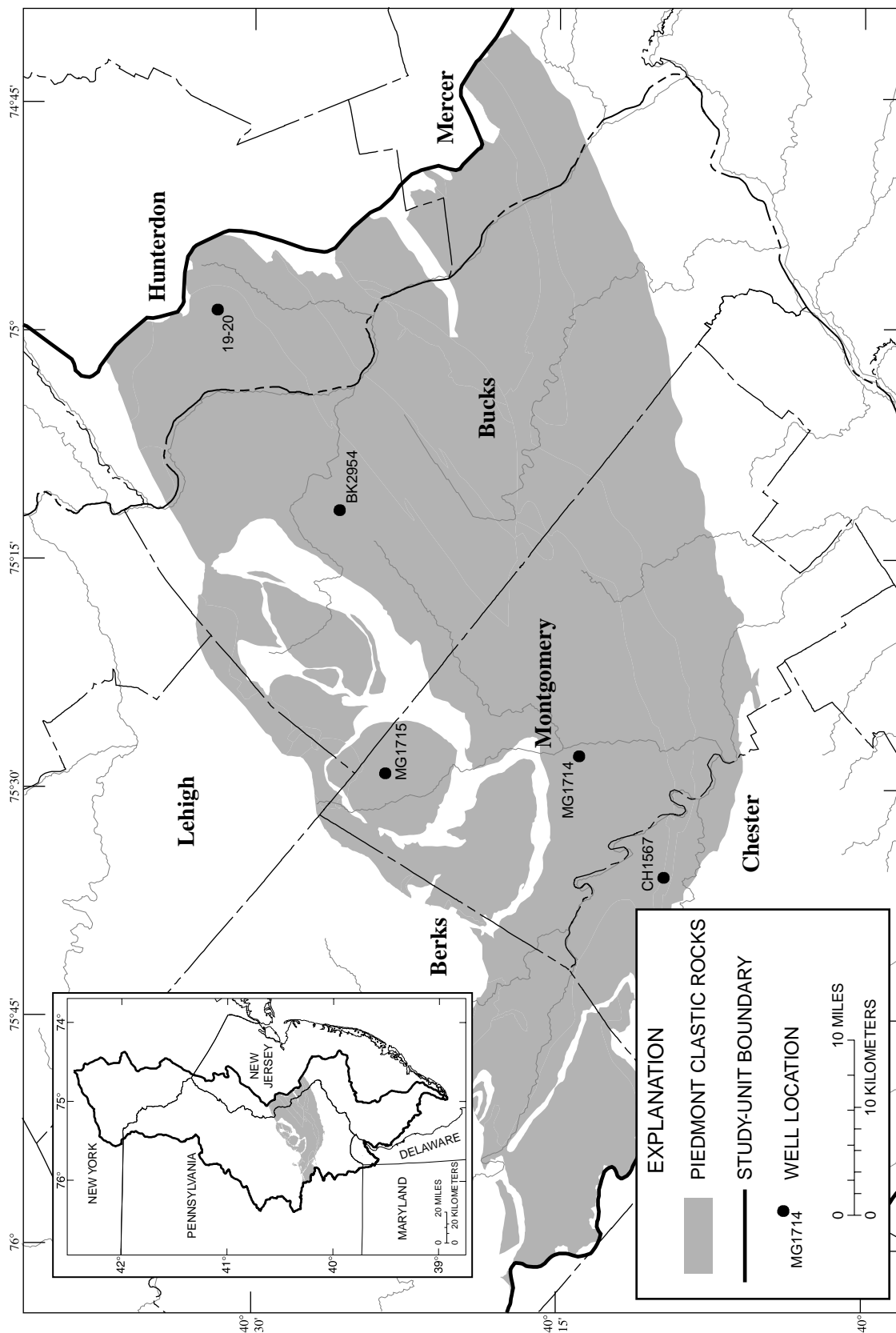


Figure 18.--Location of Delaware River Basin National Water-Quality Assessment Program low-intensity phase ground-water sampling sites in the Clastic Bedrock within the Triassic Lowlands Section of the Piedmont Physiographic Province.

**GROUND-WATER DATA COLLECTED AT SPECIAL-STUDY SITES  
DELAWARE RIVER BASIN NAWQA PROJECT**

**REMARKS.**--Explanation of column headings--Station number = 15-digit unique identifier based on site latitude (first six digits), longitude (digits seven through thirteen), and a 2-digit sequence number suffix; Altitude of land surface = land surface at well site in feet above sea level; Sampling method code 4040 = submersible pump;  $\mu\text{S}/\text{cm}$  = microsiemens per centimeter at 25 degrees Celsius; deg C = degrees Celsius;  $\mu\text{g}/\text{L}$  = micrograms per liter (parts per billion); mg/L = milligrams per liter (parts per million); "<" = less than; "E" = estimated; "M" = presence of material verified but not quantified; CIAT = deethylatrazine; DCPA = dacthal; GF = glass fiber filter.

WATER-QUALITY DATA, WATER YEAR OCTOBER 2004 TO SEPTEMBER 2005

Station number	Local ID	Date	Time	Agency collecting sample, code (00027)	Agency analyzing sample, code (00028)	Depth of well, feet below LSD (72008)	Depth to water level, feet below LSD (72019)	Altitude of land surface feet (72000)	Pump or flow period prior to sampling, minutes (72004)	Sampling method, code (82398)	Turbidity white light, det ang 90+/-30 corrctd NTRU (63676)	Barometric pressure, mm Hg (00025)	
BUCKS COUNTY, PA													
402555075114701	BK 2954	06-28-05	1110	1028	80020	92	50.38	370	58	4040	.3	759	
CHESTER COUNTY, PA													
400954075354501	CH 1567	06-27-05	1200	1028	80020	105	21.04	340	110	4040	1.5	751	
MONTGOMERY COUNTY, PA													
401405075275101	MG 1714	06-29-05	1140	1028	80020	210	57.51	200	60	4040	.2	755	
402337075290001	MG 1715	07-05-05	1150	1028	80020	200	16.90	325	103	4040	2.5	753	
HUNTERDON COUNTY, NJ													
403156074583901	190020	06-30-05	1150	1028	80020	275	17.52	525	70	4040	.2	746	
Date	Dis-solved oxygen, mg/L (00300)	Dis-solved oxygen, percent of saturation (00301)	pH, water, unfltrd field, std units (00400)	pH, water, unfltrd lab, std units (00403)	Specif. conduc-tance, wat unf lab, $\mu\text{S}/\text{cm}$ 25 degC (90095)	Specif. conduc-tance, wat unf lab, $\mu\text{S}/\text{cm}$ 25 degC (00095)	Temper-ature, air, deg C (00020)	Temper-ature, water, deg C (00010)	Hard-ness, water, mg/L as CaCO3 (00900)	Noncarb hard-ness, wat flt field, mg/L as CaCO3 (00904)	Calcium water, fltrd, mg/L (00915)	Magnes-ium, water, fltrd, mg/L (00925)	Potas-sium, water, fltrd, mg/L (00935)
BUCKS COUNTY, PA													
06-28-05	6.0	60	7.3	7.4	259	284	28.8	15.3	130	44	25.8	16.0	.90
CHESTER COUNTY, PA													
06-27-05	5.1	48	6.9	7.1	409	446	25.5	13.1	190	100	61.0	9.10	1.01
MONTGOMERY COUNTY, PA													
06-29-05	6.2	61	7.5	7.8	382	426	27.1	14.4	220	56	45.6	25.8	.81
07-05-05	4.6	45	7.3	7.6	446	484	24.7	14.7	250	64	51.9	28.2	.97
HUNTERDON COUNTY, NJ													
06-30-05	3.4	33	8.0	8.1	252	278	24.5	13.7	130	27	26.1	14.8	.67

**GROUND-WATER DATA COLLECTED AT SPECIAL-STUDY SITES  
DELAWARE RIVER BASIN NAWQA PROJECT**

WATER-QUALITY DATA, WATER YEAR OCTOBER 2004 TO SEPTEMBER 2005

Date	Sodium adsorption ratio (00931)	Sodium, water, fltrd, mg/L (00930)	Sodium, percent (00932)	Alkalinity, wat flt inc tit field, mg/L as CaCO3 (39086)	Chloride, water, fltrd, mg/L (00940)	Fluoride, water, fltrd, mg/L (00950)	Silica, water, fltrd, mg/L (00955)	Sulfate, water, fltrd, mg/L (00945)	Residue, sum of constituents mg/L (70301)	Residue, water, fltrd, tons/acre-ft (70303)	Residue on evap. at 180degC wat flt mg/L (70300)	Ammonia, water, fltrd, mg/L as N (00608)	Nitrite + nitrate, water, fltrd, mg/L as N (00631)
BUCKS COUNTY, PA													
06-28-05	.3	8.94	13	87	10.8	<.1	16.2	13.2	168	.23	169	<.04	5.33
CHESTER COUNTY, PA													
06-27-05	.4	12.4	12	89	52.4	<.1	24.3	13.2	246	.39	289	<.04	4.22
MONTGOMERY COUNTY, PA													
06-29-05	.3	11.6	10	166	19.2	E.1	25.8	11.9	259	.34	252	<.04	3.93
07-05-05	.3	11.1	9	183	13.4	<.1	22.8	16.9	288	.40	296	<.04	7.13
HUNTERDON COUNTY, NJ													
06-30-05	.5	11.7	17	102	6.47	E.1	23.7	12.6	175	.22	165	<.04	3.50
Date	Nitrite, water, fltrd, mg/L as N (00613)	Ortho-phosphate, water, fltrd, mg/L (00660)	Ortho-phosphate, water, fltrd, mg/L as P (00671)	Total nitrogen, wat flt by analysis, mg/L (62854)	Aluminum, water, fltrd, mg/L (01106)	Antimony, water, fltrd, mg/L (01095)	Arsenic, water, fltrd, mg/L (01000)	Barium, water, fltrd, mg/L (01005)	Beryllium, water, fltrd, mg/L (01010)	Boron, water, fltrd, mg/L (01020)	Cadmium, water, fltrd, mg/L (01025)	Chromium, water, fltrd, mg/L (01030)	Cobalt, water, fltrd, mg/L (01035)
BUCKS COUNTY, PA													
06-28-05	<.008	.089	.029	5.15	<2	E.11	1.4	301	<.06	21	E.03	<.8	.053
CHESTER COUNTY, PA													
06-27-05	<.008	.184	.060	4.41	<2	<.20	1.2	449	<.06	15	<.04	<.8	.134
MONTGOMERY COUNTY, PA													
06-29-05	<.008	.028	.009	3.82	<2	<.20	13.3	253	<.06	35	<.04	<.8	.096
07-05-05	<.008	.018	.006	6.80	<2	<.20	3.8	378	<.06	35	<.04	<.8	.058
HUNTERDON COUNTY, NJ													
06-30-05	<.008	.083	.027	3.56	M	<.20	25.3	98	<.06	253	<.04	E.4	.055
Date	Copper, water, fltrd, mg/L (01040)	Iron, water, fltrd, mg/L (01046)	Lead, water, fltrd, mg/L (01049)	Lithium, water, fltrd, mg/L (01130)	Manganese, water, fltrd, mg/L (01056)	Molybdenum, water, fltrd, mg/L (01060)	Nickel, water, fltrd, mg/L (01065)	Selenium, water, fltrd, mg/L (01145)	Silver, water, fltrd, mg/L (01075)	Strontium, water, fltrd, mg/L (01080)	Thallium, water, fltrd, mg/L (01057)	Vanadium, water, fltrd, mg/L (01085)	Zinc, water, fltrd, mg/L (01090)
BUCKS COUNTY, PA													
06-28-05	35.1	<6	.37	8.3	.5	1.4	.79	.8	<.2	222	<.04	1.1	27.5
CHESTER COUNTY, PA													
06-27-05	5.1	<6	.19	21.0	.3	<.4	2.26	.6	<.2	187	<.04	1.4	1.7
MONTGOMERY COUNTY, PA													
06-29-05	6.4	<6	.12	13.2	<.2	7.4	1.35	.5	<.2	1010	<.04	4.3	4.8
07-05-05	2.3	<6	.26	20.2	<.2	1.0	1.27	1.0	<.2	550	<.04	2.1	2.9
HUNTERDON COUNTY, NJ													
06-30-05	2.4	<6	.96	11.8	<.2	2.6	.84	.9	<.2	2150	<.04	7.9	36.9

**GROUND-WATER DATA COLLECTED AT SPECIAL-STUDY SITES  
DELAWARE RIVER BASIN NAWQA PROJECT**

WATER-QUALITY DATA, WATER YEAR OCTOBER 2004 TO SEPTEMBER 2005

Date	1-Naphthol, water, fltrd, 0.7µ GF µg/L (49295)	2,6-Diethyl-aniline water, fltrd, 0.7µ GF µg/L (82660)	2Chloro-2',6'-diethyl acet-anilide wat flt µg/L (61618)	CIAT, water, fltrd, µg/L (04040)	2-Ethyl-6-methyl-aniline water, fltrd, µg/L (61620)	3,4-Di-chloro-aniline water, fltrd, µg/L (61625)	3,5-Di-chloro-aniline water, fltrd, µg/L (61627)	4Chloro-2methyl phenol, water, fltrd, µg/L (61633)	Aceto-chlor, water, fltrd, µg/L (49260)	Ala-chlor, water, fltrd, µg/L (46342)	alpha-Endo-sulfan, water, fltrd, µg/L (34362)	Atra-zine, water, fltrd, µg/L (39632)	
BUCKS COUNTY, PA													
06-28-05	<.09	<.006	<.005	E.009	<.004	<.005	<.004	<.006	<.006	<.005	<.005	E.007	
CHESTER COUNTY, PA													
06-27-05	<.09	<.006	<.005	<.006	<.004	<.005	<.004	<.006	<.006	<.005	<.005	<.007	
MONTGOMERY COUNTY, PA													
06-29-05	<.09	<.006	<.005	E.012	<.004	<.005	<.004	<.006	<.006	<.005	<.005	<.007	
07-05-05	<.09	<.006	<.005	E.020	<.004	<.005	<.004	<.006	<.006	<.005	<.005	.009	
HUNTERDON COUNTY													
06-30-05	<.09	<.006	<.005	<.006	<.004	<.005	<.004	<.006	<.006	<.005	<.005	<.007	
Date	Azin-phos-methyl water, fltrd, µg/L (61635)	Azin-phos-methyl, water, fltrd, 0.7µ GF µg/L (82686)	Ben-flur-alin, water, fltrd, 0.7µ GF µg/L (82673)	Car-baryl, water, fltrd, 0.7µ GF µg/L (82680)	Carbo-furan, water, fltrd, 0.7µ GF µg/L (82674)	Chlor-pyrifos oxon, water, fltrd, µg/L (61636)	Chlor-pyrifos water, fltrd, µg/L (38933)	cis-Per-methrin water, fltrd, 0.7µ GF µg/L (82687)	cis-Propi-cona-zole, water, fltrd, µg/L (79846)	Cyana-zine, water, fltrd, µg/L (04041)	Cyflu-thrin, water, fltrd, µg/L (61585)	lambda-Cyhalo-thrin, water, fltrd, µg/L (61595)	Cyper-methrin water, fltrd, µg/L (61586)
BUCKS COUNTY, PA													
06-28-05	<.07	<.050	<.010	<.041	<.020	<.06	<.005	<.006	<.008	<.018	<.027	<.009	<.009
CHESTER COUNTY, PA													
06-27-05	<.07	<.050	<.010	<.041	<.020	<.06	<.005	<.006	<.008	<.018	<.027	<.009	<.009
MONTGOMERY COUNTY, PA													
06-29-05	<.07	<.050	<.010	<.041	<.020	<.06	<.005	<.006	<.008	<.018	<.027	<.009	<.009
07-05-05	<.07	<.050	<.010	<.041	<.020	<.06	<.005	<.006	<.008	<.018	<.027	<.009	<.009
HUNTERDON COUNTY, NJ													
06-30-05	<.07	<.050	<.010	<.041	<.020	<.06	<.005	<.006	<.008	<.018	<.027	<.009	<.009
Date	DCPA, water, fltrd, 0.7µ GF µg/L (82682)	Desulf-inyl fipro-nil, water, fltrd, µg/L (62170)	Diazi-non, water, fltrd, µg/L (39572)	Dicro-tophos, water, fltrd, µg/L (38454)	Diel-drin, water, fltrd, µg/L (39381)	Dimeth-oate, water, fltrd, 0.7µ GF µg/L (82662)	Disulf-oton sulfone water, fltrd, µg/L (61640)	Disul-foton, water, fltrd, 0.7µ GF µg/L (82677)	Endo-sulfan sulfate water, fltrd, µg/L (61590)	EPTC, water, fltrd, 0.7µ GF µg/L (82668)	Ethion monoxon water, fltrd, µg/L (61644)	Ethion, water, fltrd, µg/L (82346)	
BUCKS COUNTY, PA													
06-28-05	<.003	E.003	<.005	<.08	<.009	<.006	<.01	<.02	<.014	<.004	<.002	<.004	
CHESTER COUNTY, PA													
06-27-05	<.003	<.012	<.005	<.08	<.009	<.006	<.01	<.02	<.014	<.004	<.002	<.004	
MONTGOMERY COUNTY, PA													
06-29-05	<.003	<.012	<.005	<.08	<.009	<.006	<.01	<.02	<.014	<.004	<.002	<.004	
07-05-05	<.003	<.012	<.005	<.08	<.009	<.006	<.01	<.02	<.014	<.004	<.002	<.004	
HUNTERDON COUNTY, NJ													
06-30-05	<.003	<.012	<.005	<.08	<.009	<.006	<.01	<.02	<.014	<.004	<.002	<.004	

**GROUND-WATER DATA COLLECTED AT SPECIAL-STUDY SITES  
DELAWARE RIVER BASIN NAWQA PROJECT**

WATER-QUALITY DATA, WATER YEAR OCTOBER 2004 TO SEPTEMBER 2005

Date	Etho- prop, water, fltrd 0.7µ GF µg/L (82672)	Fenami- phos sulfone water, fltrd, µg/L (61645)	Fenami- phos sulf- oxide, water, fltrd, µg/L (61646)	Fenami- phos, water, fltrd, µg/L (61591)	Desulf- inyl- fipro- nil amide, wat flt µg/L (62169)	Fipro- nil sulfide water, fltrd, µg/L (62167)	Fipro- nil sulfone water, fltrd, µg/L (62168)	Fipro- nil, water, fltrd, µg/L (62166)	Fonofos water, fltrd, µg/L (04095)	Hexa- zinone, water, fltrd, µg/L (04025)	Ipro- dione, water, fltrd, µg/L (61593)	Isofen- phos, water, fltrd, µg/L (61594)	Mala- oxon, water, fltrd, µg/L (61652)
BUCKS COUNTY, PA													
06-28-05	<.005	<.049	<.04	<.03	<.029	<.013	E.005	<.016	<.003	<.013	<.538	<.003	<.030
CHESTER COUNTY, PA													
06-27-05	<.005	<.049	<.04	<.03	<.029	<.013	<.024	<.016	<.003	<.013	<.538	<.003	<.030
MONTGOMERY COUNTY, PA													
06-29-05	<.005	<.049	<.04	<.03	<.029	<.013	<.024	<.016	<.003	<.013	<.538	<.003	<.030
07-05-05	<.005	<.049	<.04	<.03	<.029	<.013	<.024	<.016	<.003	<.013	<.538	<.003	<.030
HUNTERDON COUNTY, NJ													
06-30-05	<.005	<.049	<.04	<.03	<.029	<.013	<.024	<.016	<.003	<.013	<.538	<.003	<.030
Date	Mala- thion, water, fltrd, µg/L (39532)	Meta- laxyl, water, fltrd, µg/L (61596)	Methi- althion water, fltrd, µg/L (61598)	Methyl para- oxon, water, fltrd, µg/L (61664)	Methyl para- thion, water, fltrd 0.7µ GF µg/L (82667)	Metola- chlor, water, fltrd, µg/L (39415)	Metri- buzin, water, fltrd, µg/L (82630)	Moli- nate, water, fltrd 0.7µ GF µg/L (82671)	Myclo- butanil water, fltrd, µg/L (61599)	Oxy- fluor- fen, water, fltrd, µg/L (61600)	Pendi- meth- alin, water, fltrd 0.7µ GF µg/L (82683)	Phorate oxon, water, fltrd, µg/L (61666)	Phorate water fltrd 0.7µ GF µg/L (82664)
BUCKS COUNTY, PA													
06-28-05	<.027	<.005	<.006	<.03	<.015	E.005	E.005	<.003	<.008	<.007	<.022	<.10	<.011
CHESTER COUNTY, PA													
06-27-05	<.027	<.005	<.006	<.03	<.015	<.006	<.006	<.003	<.008	<.007	<.022	<.10	<.011
MONTGOMERY COUNTY, PA													
06-29-05	<.027	<.005	<.006	<.03	<.015	<.006	<.006	<.003	<.008	<.007	<.022	<.10	<.011
07-05-05	<.027	<.005	<.006	<.03	<.015	<.006	<.006	<.003	<.008	<.007	<.022	<.10	<.011
HUNTERDON COUNTY, NJ													
06-30-05	<.027	<.005	<.006	<.03	<.015	<.006	<.006	<.003	<.008	<.007	<.022	<.10	<.011
Date	Phosmet oxon, water, fltrd, µg/L (61668)	Phosmet water, fltrd, µg/L (61601)	Prome- ton, water, fltrd, µg/L (04037)	Prome- tryn, water, fltrd, µg/L (04036)	Propy- zamide, water, fltrd 0.7µ GF µg/L (82676)	Pro- panil, water, fltrd 0.7µ GF µg/L (82679)	Propar- gite, water, fltrd 0.7µ GF µg/L (82685)	Sima- zine, water, fltrd, µg/L (04035)	Tebu- thiuron water, fltrd 0.7µ GF µg/L (82670)	Teflu- thrin, water, fltrd, µg/L (61606)	Ter- bufos oxon sulfone water, fltrd, µg/L (61674)	Terbu- fos, water, fltrd 0.7µ GF µg/L (82675)	Ter- buthyl- azine, water, fltrd, µg/L (04022)
BUCKS COUNTY, PA													
06-28-05	<.05	<.008	E.01	<.005	<.004	<.011	<.02	.148	<.02	<.008	<.07	<.02	<.01
CHESTER COUNTY, PA													
06-27-05	--	--	<.01	<.005	<.004	<.011	<.02	<.005	<.02	<.008	<.07	<.02	<.01
MONTGOMERY COUNTY, PA													
06-29-05	<.05	<.008	<.01	<.005	<.004	<.011	<.02	<.005	<.02	<.008	<.07	<.02	<.01
07-05-05	--	--	<.01	<.005	<.004	<.011	<.02	E.006	<.02	<.008	<.07	<.02	<.01
HUNTERDON COUNTY, NJ													
06-30-05	<.05	<.008	<.01	<.005	<.004	<.011	<.02	<.005	<.02	<.008	<.07	<.02	<.01

**GROUND-WATER DATA COLLECTED AT SPECIAL-STUDY SITES  
DELAWARE RIVER BASIN NAWQA PROJECT**

WATER-QUALITY DATA, WATER YEAR OCTOBER 2004 TO SEPTEMBER 2005

Date	Thio- bencarb water fltrd 0.7µ GF µg/L (82681)	trans- Propi- cona- zole, water, fltrd, µg/L (79847)	Tribu- phos, water, fltrd, µg/L (61610)	Tri- flur- alin, water, fltrd 0.7µ GF µg/L (82661)	1,1,1,2 -Tetra- chloro- ethane, water, unfltrd µg/L (77562)	1,1,1- Tri- chloro- ethane, water, unfltrd µg/L (34506)	1,1,2,2 -Tetra- chloro- ethane, water, unfltrd µg/L (34516)	CFC-113 water unfltrd µg/L (77652)	1,1,2- Tri- chloro- ethane, water, unfltrd µg/L (34511)	1,1-Di- chloro- ethane, water, unfltrd µg/L (34496)	1,1-Di- chloro- ethene, water, unfltrd µg/L (34501)	1,1-Di- chloro- propene water unfltrd µg/L (77168)	1,2,3,4 Tetra- methyl- benzene water unfltrd µg/L (49999)
BUCKS COUNTY, PA													
06-28-05	<.010	<.01	<.004	<.009	<.03	<.03	<.08	<.04	<.04	<.04	<.02	<.03	<.1
CHESTER COUNTY, PA													
06-27-05	<.010	<.01	<.004	<.009	<.03	E.02	<.08	<.04	<.04	<.04	<.02	<.03	<.1
MONTGOMERY COUNTY, PA													
06-29-05	<.010	<.01	<.004	<.009	<.03	<.03	<.08	<.04	<.04	<.04	<.02	<.03	<.1
07-05-05	<.010	<.01	<.004	<.009	<.03	.19	<.08	<.04	<.04	<.04	.11	<.03	<.1
HUNTERDON COUNTY, NJ													
06-30-05	<.010	<.01	<.004	<.009	<.03	<.03	<.08	<.04	<.04	<.04	<.02	<.03	<.1
Date	1,2,3,5 Tetra- methyl- benzene water unfltrd µg/L (50000)	1,2,3- Tri- chloro- propane water unfltrd µg/L (77613)	1,2,3- Tri- chloro- propane water unfltrd µg/L (77443)	1,2,3- Tri- methyl- benzene water unfltrd µg/L (77221)	1,2,4- Tri- chloro- benzene water unfltrd µg/L (34551)	1,2,4- Tri- methyl- benzene water unfltrd µg/L (77222)	Dibromo- chloro- propane water unfltrd µg/L (82625)	1,2-Di- bromo- ethane, water, unfltrd µg/L (77651)	1,2-Di- chloro- benzene water unfltrd µg/L (34536)	1,2-Di- chloro- ethane, water, unfltrd µg/L (32103)	1,2-Di- chloro- propane water unfltrd µg/L (34541)	1,3,5- Tri- methyl- benzene water unfltrd µg/L (77226)	
BUCKS COUNTY, PA													
06-28-05	<.1	<.2	<.18	<.1	<.1	<.06	<.5	<.04	<.05	<.1	<.03	<.04	
CHESTER COUNTY, PA													
06-27-05	<.1	<.2	<.18	<.1	<.1	<.06	<.5	<.04	<.05	<.1	<.03	<.04	
MONTGOMERY COUNTY, PA													
06-29-05	<.1	<.2	<.18	<.1	<.1	<.06	<.5	<.04	<.05	<.1	<.03	<.04	
07-05-05	<.1	<.2	<.18	<.1	<.1	<.06	<.5	<.04	<.05	<.1	<.03	<.04	
HUNTERDON COUNTY, NJ													
06-30-05	<.1	<.2	<.18	<.1	<.1	<.06	<.5	<.04	<.05	<.1	<.03	<.04	
Date	1,3-Di- chloro- benzene water unfltrd µg/L (34566)	1,3-Di- chloro- propane water unfltrd µg/L (77173)	1,4-Di- chloro- benzene water unfltrd µg/L (34571)	2,2-Di- chloro- propane water unfltrd µg/L (77170)	2- Chloro- toluene water unfltrd µg/L (77275)	2- Ethyl- toluene water unfltrd µg/L (77220)	3- Chloro- propene water unfltrd µg/L (78109)	4- Chloro- toluene water unfltrd µg/L (77277)	4-Iso- propyl- toluene water unfltrd µg/L (77356)	Acetone water unfltrd µg/L (81552)	Acrylo- nitrile water unfltrd µg/L (34215)	Benzene water unfltrd µg/L (34030)	
BUCKS COUNTY, PA													
06-28-05	<.03	<.1	<.03	<.05	<.04	<.06	<.50	<.05	<.08	<.6	<.8	<.02	
CHESTER COUNTY, PA													
06-27-05	<.03	<.1	<.03	<.05	<.04	<.06	<.50	<.05	<.08	<.6	<.8	<.02	
MONTGOMERY COUNTY, PA													
06-29-05	<.03	<.1	<.03	<.05	<.04	<.06	<.50	<.05	<.08	<.6	<.8	<.02	
07-05-05	<.03	<.1	<.03	<.05	<.04	<.06	<.50	<.05	<.08	<.6	<.8	<.02	
HUNTERDON COUNTY, NJ													
06-30-05	<.03	<.1	<.03	<.05	<.04	<.06	<.50	<.05	<.08	<.6	<.8	<.02	

**GROUND-WATER DATA COLLECTED AT SPECIAL-STUDY SITES  
DELAWARE RIVER BASIN NAWQA PROJECT**

WATER-QUALITY DATA, WATER YEAR OCTOBER 2004 TO SEPTEMBER 2005

Date	Bromo-benzene water unfltrd µg/L (81555)	Bromo-chloro-methane water unfltrd µg/L (77297)	Bromo-di-chloro-methane water unfltrd µg/L (32101)	Bromo-ethene, water, unfltrd µg/L (50002)	Bromo-methane water unfltrd µg/L (34413)	Carbon di-sulfide water unfltrd µg/L (77041)	Chloro-benzene water unfltrd µg/L (34301)	Chloro-ethane, water, unfltrd µg/L (34311)	Chloro-methane water unfltrd µg/L (34418)	cis-1,2-Di-chloro-ethene, water, unfltrd µg/L (77093)	cis-1,3-Di-chloro-propene water unfltrd µg/L (34704)	Di-bromo-chloro-methane water unfltrd µg/L (32105)	Di-bromo-methane water unfltrd µg/L (30217)
BUCKS COUNTY, PA													
06-28-05	<.03	<.12	<.03	<.1	<.3	<.04	<.03	<.1	<.2	<.02	<.05	<.1	<.05
CHESTER COUNTY, PA													
06-27-05	<.03	<.12	<.03	<.1	<.3	<.04	<.03	<.1	<.2	<.02	<.05	<.1	<.05
MONTGOMERY COUNTY, PA													
06-29-05	<.03	<.12	<.03	<.1	<.3	<.04	<.03	<.1	<.2	<.02	<.05	<.1	<.05
07-05-05	<.03	<.12	<.03	<.1	<.3	<.04	<.03	<.1	<.2	<.02	<.05	<.1	<.05
HUNTERDON COUNTY, NJ													
06-30-05	<.03	<.12	<.03	<.1	<.3	<.04	<.03	<.1	<.2	<.02	<.05	<.1	<.05
Date	Di-chloro-di-fluoro-methane wat unfltrd µg/L (34668)	Di-chloro-methane water unfltrd µg/L (34423)	Di-ethyl ether, water, unfltrd µg/L (81576)	Diisopropyl ether, water, unfltrd µg/L (81577)	Ethyl methacrylate, water, unfltrd µg/L (73570)	Ethyl methyl ketone, water, unfltrd µg/L (81595)	Ethyl-benzene water unfltrd µg/L (34371)	Hexa-chloro-butadiene, water, unfltrd µg/L (39702)	Hexa-chloro-ethane, water, unfltrd µg/L (34396)	Iodo-methane water unfltrd µg/L (77424)	Iso-butyl methyl ketone, water, unfltrd µg/L (78133)	Iso-propyl-benzene water unfltrd µg/L (77223)	Methyl acrylonitrile water unfltrd µg/L (81593)
BUCKS COUNTY, PA													
06-28-05	<.18	<.1	<.1	<.10	<.2	<2.0	<.03	<.1	<.1	<.50	<.4	<.04	<.4
CHESTER COUNTY, PA													
06-27-05	<.18	<.1	<.1	<.10	<.2	<2.0	<.03	<.1	<.1	<.50	<.4	<.04	<.4
MONTGOMERY COUNTY, PA													
06-29-05	<.18	<.1	<.1	<.10	<.2	<2.0	<.03	<.1	<.1	<.50	<.4	<.04	<.4
07-05-05	<.18	<.1	<.1	<.10	<.2	<2.0	<.03	<.1	<.1	<.50	<.4	<.04	<.4
HUNTERDON COUNTY, NJ													
06-30-05	<.18	<.1	<.1	<.10	<.2	<2.0	<.03	<.1	<.1	<.50	<.4	<.04	<.4
Date	Methyl acrylate, water, unfltrd µg/L (49991)	Methyl methacrylate, water, unfltrd µg/L (81597)	Methyl tert-pentyl ether, water, unfltrd µg/L (50005)	meta- + para-Xylene, water, unfltrd µg/L (85795)	Naphthalene, water, unfltrd µg/L (34696)	Methyl n-butyl ketone, water, unfltrd µg/L (77103)	n-Butyl benzene water unfltrd µg/L (77342)	n-propyl-benzene water unfltrd µg/L (77224)	o-Xylene, water, unfltrd µg/L (77135)	sec-Butyl-benzene water unfltrd µg/L (77350)	Styrene water unfltrd µg/L (77128)	t-Butyl ethyl ether, water, unfltrd µg/L (50004)	Methyl t-butyl ether, water, unfltrd µg/L (78032)
BUCKS COUNTY, PA													
06-28-05	<1.0	<.2	<.04	<.06	<.5	<.4	<.1	<.04	<.04	<.06	<.04	<.03	<.1
CHESTER COUNTY, PA													
06-27-05	<1.0	<.2	<.04	<.06	<.5	<.4	<.1	<.04	<.04	<.06	<.04	<.03	.2
MONTGOMERY COUNTY, PA													
06-29-05	<1.0	<.2	<.04	<.06	<.5	<.4	<.1	<.04	<.04	<.06	<.04	<.03	<.1
07-05-05	<1.0	<.2	<.04	<.06	<.5	<.4	<.1	<.04	<.04	<.06	<.04	<.03	<.1
HUNTERDON COUNTY, NJ													
06-30-05	<1.0	<.2	<.04	<.06	<.5	<.4	<.1	<.04	<.04	<.06	<.04	<.03	<.1



**GROUND-WATER DATA COLLECTED AT SPECIAL-STUDY SITES  
DELAWARE RIVER BASIN NAWQA PROJECT**

WATER-QUALITY DATA, WATER YEAR OCTOBER 2004 TO SEPTEMBER 2005

Date	tert-Butylbenzene water unfltrd µg/L (77353)	Tetra-chloro-ethene, water, unfltrd µg/L (34475)	Tetra-chloro-methane water unfltrd µg/L (32102)	Tetra-hydro-furan, water, unfltrd µg/L (81607)	Toluene water unfltrd µg/L (34010)	trans-1,2-Di-chloro-ethene, water, unfltrd µg/L (34546)	trans-1,3-Di-chloro-propene water unfltrd µg/L (34699)	trans-1,4-Di-chloro-2-butene, wat unfltrd µg/L (73547)	Tri-bromo-methane water unfltrd µg/L (32104)	Tri-chloro-ethene, water, unfltrd µg/L (39180)	Tri-chloro-fluoro-methane water unfltrd µg/L (34488)	Tri-chloro-methane water unfltrd µg/L (32106)	
BUCKS COUNTY, PA													
06-28-05	<.06	<.03	<.06	<1	<.02	<.03	<.09	<.7	<.10	<.04	<.08	<.02	
CHESTER COUNTY, PA													
06-27-05	<.06	<.03	<.06	<1	<.02	<.03	<.09	<.7	<.10	E.07	<.08	.11	
MONTGOMERY COUNTY, PA													
06-29-05	<.06	<.03	<.06	<1	<.02	<.03	<.09	<.7	<.10	<.04	<.08	E.02	
07-05-05	<.06	<.03	<.06	<1	<.02	<.03	<.09	<.7	<.10	<.04	<.08	<.02	
HUNTERDON COUNTY, NJ													
06-30-05	<.06	<.03	<.06	<1	<.02	<.03	<.09	<.7	<.10	<.04	<.08	E.03	
Date													
						Vinyl chlor-ide, water, unfltrd µg/L (39175)	Di-chlor-ovos, water, fltrd, µg/L (38775)	Uranium natural water, fltrd, µg/L (22703)					
BUCKS COUNTY, PA													
06-28-05						<.1	<.01	1.85					
CHESTER COUNTY, PA													
06-27-05						<.1	<.01	.90					
MONTGOMERY COUNTY, PA													
06-29-05						<.1	<.01	2.93					
07-05-05						<.1	<.01	3.12					
HUNTERDON COUNTY, NJ													
06-30-05						<.1	<.01	2.26					



**GROUND-WATER DATA COLLECTED AT SPECIAL-STUDY SITES  
DELAWARE RIVER BASIN NAWQA PROJECT**

QUALITY-CONTROL DATA, WATER YEAR OCTOBER 2004 TO SEPTEMBER 2005

Date	Nickel, water, fltrd, µg/L (01065)	Selen- ium, water, fltrd, µg/L (01145)	Silver, water, fltrd, µg/L (01075)	Stront- ium, water, fltrd, µg/L (01080)	Thall- ium, water, fltrd, µg/L (01057)	Vanad- ium, water, fltrd, µg/L (01085)	Zinc, water, fltrd, µg/L (01090)	1-Naph- thol, water, fltrd 0.7µ GF µg/L (49295)	2,6-Di- ethyl- aniline water fltrd 0.7µ GF µg/L (82660)	2Chloro -2',6'- diethyl acet- anilide wat flt µg/L (61618)	CIAT, water, fltrd, µg/L (04040)	2-Ethyl -6- methyl- aniline water, fltrd, µg/L (61620)	3,4-Di- chloro- aniline water, fltrd, µg/L (61625)
CUMBERLAND COUNTY													
05-25-05	--	--	--	--	--	--	--	--	--	--	--	--	--
05-25-05	--	--	--	--	--	--	--	--	--	--	--	--	--
05-25-05	<.06	<.4	<.2	<.40	<.04	<.1	<.6	--	--	--	--	--	--
05-25-05	<.06	<.4	<.2	<.40	<.04	<.1	<.6	--	--	--	--	--	--
07-05-05	--	--	--	--	--	--	--	--	--	--	--	--	--
MONTGOMERY COUNTY													
06-29-05	<.06	<.4	<.2	<.40	<.04	<.1	<.6	--	--	--	--	--	--
07-05-05	--	--	--	--	--	--	--	<.09	<.006	<.005	<.006	<.004	<.004
Date	3,5-Di- chloro- aniline water, fltrd, µg/L (61627)	4Chloro 2methyl phenol, water, fltrd, µg/L (61633)	Aceto- chlor, water, fltrd, µg/L (49260)	Ala- chlor, water, fltrd, µg/L (46342)	alpha- Endo- sulfan, water, fltrd, µg/L (34362)	alpha- HCH-d6, surrog, Sch2003 wat flt percent recovery µg/L (99995)	Atra- zine, water, fltrd, µg/L (39632)	Azin- phos- methyl oxon, water, fltrd, µg/L (61635)	Azin- phos- methyl, water, fltrd 0.7µ GF µg/L (82686)	Ben- flur- alin, water, fltrd 0.7µ GF µg/L (82673)	Car- baryl, water, fltrd 0.7µ GF µg/L (82680)	Carbo- furan, water, fltrd 0.7µ GF µg/L (82674)	Chlor- pyrifos oxon, water, fltrd, µg/L (61636)
CUMBERLAND COUNTY													
05-25-05	--	--	--	--	--	--	--	--	--	--	--	--	--
05-25-05	--	--	--	--	--	--	--	--	--	--	--	--	--
05-25-05	--	--	--	--	--	--	--	--	--	--	--	--	--
05-25-05	--	--	--	--	--	--	--	--	--	--	--	--	--
07-05-05	--	--	--	--	--	--	--	--	--	--	--	--	--
MONTGOMERY COUNTY													
06-29-05	--	--	--	--	--	--	--	--	--	--	--	--	--
07-05-05	<.004	<.006	<.006	<.005	<.005	90.3	<.007	<.07	<.050	<.010	<.041	<.020	<.06
Date	Chlor- pyrifos water, fltrd, µg/L (38933)	cis- Per- methrin water fltrd 0.7µ GF µg/L (82687)	cis- Propi- cona- zole, water, fltrd, µg/L (79846)	Cyana- zine, water, fltrd, µg/L (04041)	Cyflu- thrin, water, fltrd, µg/L (61585)	lambda- Cyhalo- thrin, water, fltrd, µg/L (61595)	Cyper- methrin water, fltrd, µg/L (61586)	DCPA, water fltrd 0.7µ GF µg/L (82682)	Desulf- inyl fipro- nil, water, fltrd, µg/L (62170)	Diazi- non, water, fltrd, µg/L (39572)	Diazi- non-d10 surrog, Sch2003 wat flt percent recovery µg/L (99994)	Dicro- tophos, water, fltrd, µg/L (38454)	Diel- drin, water, fltrd, µg/L (39381)
CUMBERLAND COUNTY													
05-25-05	--	--	--	--	--	--	--	--	--	--	--	--	--
05-25-05	--	--	--	--	--	--	--	--	--	--	--	--	--
05-25-05	--	--	--	--	--	--	--	--	--	--	--	--	--
05-25-05	--	--	--	--	--	--	--	--	--	--	--	--	--
07-05-05	--	--	--	--	--	--	--	--	--	--	--	--	--
MONTGOMERY COUNTY													
06-29-05	--	--	--	--	--	--	--	--	--	--	--	--	--
07-05-05	<.005	<.006	<.008	<.018	<.027	<.009	<.009	<.003	<.012	<.005	92.5	<.08	<.009
Date	Dimeth- oate, water, fltrd 0.7µ GF µg/L (82662)	Disulf- oton sulfone water, fltrd, µg/L (61640)	Disul- foton, water, fltrd 0.7µ GF µg/L (82677)	Endo- sulfan sulfate water, fltrd, µg/L (61590)	EPTC, water, fltrd, µg/L (82668)	Ethion monoxon water, fltrd, µg/L (61644)	Ethion water, fltrd, µg/L (82346)	Etho- prop, water, fltrd 0.7µ GF µg/L (82672)	Fenami- phos sulfone water, fltrd, µg/L (61645)	Fenami- phos sulf- oxide, water, fltrd, µg/L (61646)	Fenami- phos, water, fltrd, µg/L (61591)	Desulf- inyl- fipro- nil amide, wat flt µg/L (62169)	Fipro- nil sulfide water, fltrd, µg/L (62167)
CUMBERLAND COUNTY													
05-25-05	--	--	--	--	--	--	--	--	--	--	--	--	--
05-25-05	--	--	--	--	--	--	--	--	--	--	--	--	--
05-25-05	--	--	--	--	--	--	--	--	--	--	--	--	--
05-25-05	--	--	--	--	--	--	--	--	--	--	--	--	--
07-05-05	--	--	--	--	--	--	--	--	--	--	--	--	--
MONTGOMERY COUNTY													
06-29-05	--	--	--	--	--	--	--	--	--	--	--	--	--
07-05-05	<.006	<.01	<.02	<.014	<.004	<.002	<.004	<.005	<.049	<.04	<.03	<.029	<.013

**GROUND-WATER DATA COLLECTED AT SPECIAL-STUDY SITES  
DELAWARE RIVER BASIN NAWQA PROJECT**

QUALITY-CONTROL DATA, WATER YEAR OCTOBER 2004 TO SEPTEMBER 2005

Date	Fipronil sulfone water, fltrd, µg/L (62168)	Fipronil water, fltrd, µg/L (62166)	Fonofos water, fltrd, µg/L (04095)	Hexazinone water, fltrd, µg/L (04025)	Iprodione water, fltrd, µg/L (61593)	Isofenphos water, fltrd, µg/L (61594)	Malathion water, fltrd, µg/L (61652)	Malathion water, fltrd, µg/L (39532)	Metaxyl water, fltrd, µg/L (61596)	Methidathion water, fltrd, µg/L (61598)	Methyl parathion water, fltrd, µg/L (61664)	Methyl parathion water, fltrd, 0.7µ GF (82667)	Metolachlor water, fltrd, µg/L (39415)
CUMBERLAND COUNTY													
05-25-05	--	--	--	--	--	--	--	--	--	--	--	--	--
05-25-05	--	--	--	--	--	--	--	--	--	--	--	--	--
05-25-05	--	--	--	--	--	--	--	--	--	--	--	--	--
05-25-05	--	--	--	--	--	--	--	--	--	--	--	--	--
07-05-05	--	--	--	--	--	--	--	--	--	--	--	--	--
MONTGOMERY COUNTY													
06-29-05	--	--	--	--	--	--	--	--	--	--	--	--	--
07-05-05	<.024	E.006	<.003	<.013	<.538	<.003	<.030	<.027	<.005	<.006	<.03	<.015	<.006
Date	Metribuzin water, fltrd, µg/L (82630)	Molinate water, 0.7µ GF (82671)	Myclobutanil water, fltrd, µg/L (61599)	Oxyfluorfen water, fltrd, µg/L (61600)	Pendimethalin water, fltrd, 0.7µ GF (82683)	Phorate oxon water, fltrd, µg/L (61666)	Phorate water fltrd, 0.7µ GF (82664)	Prometon water, fltrd, µg/L (04037)	Prometryn water, fltrd, µg/L (04036)	Propyzamide water, fltrd, 0.7µ GF (82676)	Propanil water, fltrd, 0.7µ GF (82679)	Propargite water, fltrd, 0.7µ GF (82685)	Simazine water, fltrd, µg/L (04035)
CUMBERLAND COUNTY													
05-25-05	--	--	--	--	--	--	--	--	--	--	--	--	--
05-25-05	--	--	--	--	--	--	--	--	--	--	--	--	--
05-25-05	--	--	--	--	--	--	--	--	--	--	--	--	--
05-25-05	--	--	--	--	--	--	--	--	--	--	--	--	--
07-05-05	--	--	--	--	--	--	--	--	--	--	--	--	--
MONTGOMERY COUNTY													
06-29-05	--	--	--	--	--	--	--	--	--	--	--	--	--
07-05-05	<.006	<.003	<.008	<.007	<.022	<.10	<.011	<.01	<.005	<.004	<.011	<.02	<.005
Date	Tebu-thiuron water, fltrd, 0.7µ GF (82670)	Tefluthrin water, fltrd, µg/L (61606)	Terbufos sulfone water, fltrd, µg/L (61674)	Terbufos water, fltrd, 0.7µ GF (82675)	Terbutylazine water, fltrd, µg/L (04022)	Thiocarb water fltrd, 0.7µ GF (82681)	trans-Propiconazole water, fltrd, µg/L (79847)	Tribu-phos water, fltrd, µg/L (61610)	Tri-flur-alin water, fltrd, µg/L (82661)	1,1,1,2-Tetra-chloro-ethane water, unfltrd, µg/L (77562)	1,1,1-Tri-chloro-ethane water, unfltrd, µg/L (34506)	1,1,2,2-Tetra-chloro-ethane water, unfltrd, µg/L (34516)	CFC-113 water unfltrd, µg/L (77652)
CUMBERLAND COUNTY													
05-25-05	--	--	--	--	--	--	--	--	--	<.03	<.03	<.08	<.04
05-25-05	--	--	--	--	--	--	--	--	--	<.03	<.03	<.08	<.04
05-25-05	--	--	--	--	--	--	--	--	--	--	--	--	--
05-25-05	--	--	--	--	--	--	--	--	--	--	--	--	--
07-05-05	--	--	--	--	--	--	--	--	--	<.03	<.03	<.08	<.04
MONTGOMERY COUNTY													
06-29-05	--	--	--	--	--	--	--	--	--	--	--	--	--
07-05-05	<.02	<.008	<.07	<.02	<.01	<.010	<.01	<.004	<.009	<.03	<.03	<.08	<.04
Date	1,1,2-Tri-chloro-ethane water, unfltrd, µg/L (34511)	1,1-Di-chloro-ethane water, unfltrd, µg/L (34496)	1,1-Di-chloro-ethene water, unfltrd, µg/L (34501)	1,1-Di-chloro-propene water, unfltrd, µg/L (77168)	1,2,3,4 Tetra-methyl-benzene water unfltrd, µg/L (49999)	1,2,3,5 Tetra-methyl-benzene water unfltrd, µg/L (50000)	1,2,3-Tri-chloro-benzene water unfltrd, µg/L (77613)	1,2,3-Tri-chloro-propane water unfltrd, µg/L (77443)	1,2,3-Tri-methyl-benzene water unfltrd, µg/L (77221)	1,2,4-Tri-chloro-benzene water unfltrd, µg/L (34551)	1,2,4-Tri-methyl-benzene water unfltrd, µg/L (77222)	Dibromo-chloro-propane water unfltrd, µg/L (82625)	1,2-Di-bromo-ethane water, unfltrd, µg/L (77651)
CUMBERLAND COUNTY													
05-25-05	<.04	<.04	<.02	<.03	<.1	<.1	<.2	<.18	<.1	<.1	<.06	<.5	<.04
05-25-05	<.04	<.04	<.02	<.03	<.1	<.1	<.2	<.18	<.1	<.1	<.06	<.5	<.04
05-25-05	--	--	--	--	--	--	--	--	--	--	--	--	--
05-25-05	--	--	--	--	--	--	--	--	--	--	--	--	--
07-05-05	<.04	<.04	<.02	<.03	<.1	<.1	<.2	<.18	<.1	<.1	<.06	<.5	<.04
MONTGOMERY COUNTY													
06-29-05	--	--	--	--	--	--	--	--	--	--	--	--	--
07-05-05	<.04	<.04	<.02	<.03	<.1	<.1	<.2	<.18	<.1	<.1	<.06	<.5	<.04

**GROUND-WATER DATA COLLECTED AT SPECIAL-STUDY SITES  
DELAWARE RIVER BASIN NAWQA PROJECT**

QUALITY-CONTROL DATA, WATER YEAR OCTOBER 2004 TO SEPTEMBER 2005

Date	1,2-Di-chloro-benzene water unfltrd µg/L (34536)	1,2-Di-chloro-ethane, water, unfltrd µg/L (32103)	1,2-Di-chloro-ethane-d4, sur Sch2090 wat unf pct rcv (99832)	1,2-Di-chloro-propane water unfltrd µg/L (34541)	1,3,5-Tri-methyl-benzene water unfltrd µg/L (77226)	1,3-Di-chloro-benzene water unfltrd µg/L (34566)	1,3-Di-chloro-propane water unfltrd µg/L (77173)	1,4-Di-chloro-benzene water unfltrd µg/L (34571)	14Bromo-fluoro-benzene surrog. VOC Sch wat unf pct rcv (99834)	2,2-Di-chloro-propane water unfltrd µg/L (77170)	2-Chloro-toluene water unfltrd µg/L (77275)	2-Ethyl-toluene water unfltrd µg/L (77220)	3-Chloro-propene water unfltrd µg/L (78109)
CUMBERLAND COUNTY													
05-25-05	<.05	<.1	106	<.03	<.04	<.03	<.1	<.03	72.2	<.05	<.04	<.06	<.50
05-25-05	<.05	<.1	112	<.03	<.04	<.03	<.1	<.03	64.7	<.05	<.04	<.06	<.50
05-25-05	--	--	--	--	--	--	--	--	--	--	--	--	--
05-25-05	--	--	--	--	--	--	--	--	--	--	--	--	--
07-05-05	<.05	<.1	100	<.03	<.04	<.03	<.1	<.03	97.9	<.05	<.04	<.06	<.50
MONTGOMERY COUNTY													
06-29-05	--	--	--	--	--	--	--	--	--	--	--	--	--
07-05-05	<.05	<.1	98.8	<.03	<.04	<.03	<.1	<.03	95.0	<.05	<.04	<.06	<.50
Date	4-Chloro-toluene water unfltrd µg/L (77277)	4-Iso-propyl-toluene water unfltrd µg/L (77356)	Acetone unfltrd µg/L (81552)	Acrylo-nitrile water unfltrd µg/L (34215)	Benzene water unfltrd µg/L (34030)	Bromo-benzene water unfltrd µg/L (81555)	Bromo-chloro-methane water unfltrd µg/L (77297)	Bromo-di-chloro-methane water unfltrd µg/L (32101)	Bromo-ethene, water, unfltrd µg/L (50002)	Bromo-methane water unfltrd µg/L (34413)	Carbon di-sulfide unfltrd µg/L (77041)	Chloro-benzene water unfltrd µg/L (34301)	Chloro-ethane, water, unfltrd µg/L (34311)
CUMBERLAND COUNTY													
05-25-05	<.05	<.08	<6	<.8	<.02	<.03	<.12	<.03	<.1	<.3	<.04	<.03	<.1
05-25-05	<.05	<.08	<6	<.8	<.02	<.03	<.12	<.03	<.1	<.3	<.04	<.03	<.1
05-25-05	--	--	--	--	--	--	--	--	--	--	--	--	--
05-25-05	--	--	--	--	--	--	--	--	--	--	--	--	--
07-05-05	<.05	<.08	<6	<.8	<.02	<.03	<.12	<.03	<.1	<.3	E.01	<.03	<.1
MONTGOMERY COUNTY													
06-29-05	--	--	--	--	--	--	--	--	--	--	--	--	--
07-05-05	<.05	<.08	<6	<.8	<.02	<.03	<.12	<.03	<.1	<.3	E.02	<.03	<.1
Date	Chloro-methane water unfltrd µg/L (34418)	cis-1,2-Di-chloro-ethene, water, unfltrd µg/L (77093)	cis-1,3-Di-chloro-propene water unfltrd µg/L (34704)	Di-bromo-chloro-methane water unfltrd µg/L (32105)	Di-bromo-methane water unfltrd µg/L (30217)	Di-chloro-di-fluoro-methane wat unf µg/L (34668)	Di-chloro-methane water unfltrd µg/L (34423)	Di-ethyl ether, water, unfltrd µg/L (81576)	Diiso-propyl ether, water, unfltrd µg/L (81577)	Ethyl methac-rylate, water, unfltrd µg/L (73570)	Ethyl methyl ketone, water, unfltrd µg/L (81595)	Ethyl-benzene water unfltrd µg/L (34371)	Hexa-chloro-buta-diene, water, unfltrd µg/L (39702)
CUMBERLAND COUNTY													
05-25-05	<.2	<.02	<.05	<.1	<.05	<.18	<.1	<.1	<.10	<.2	<2.0	<.03	<.1
05-25-05	<.2	<.02	<.05	<.1	<.05	<.18	<.1	<.1	<.10	<.2	<2.0	<.03	<.1
05-25-05	--	--	--	--	--	--	--	--	--	--	--	--	--
05-25-05	--	--	--	--	--	--	--	--	--	--	--	--	--
07-05-05	<.2	<.02	<.05	<.1	<.05	<.18	<.1	<.1	<.10	<.2	<2.0	<.03	<.1
MONTGOMERY COUNTY													
06-29-05	--	--	--	--	--	--	--	--	--	--	--	--	--
07-05-05	<.2	<.02	<.05	<.1	<.05	<.18	<.1	<.1	<.10	<.2	<2.0	<.03	<.1
Date	Hexa-chloro-ethane, water, unfltrd µg/L (34396)	Iodo-methane water unfltrd µg/L (77424)	Iso-butyl methyl ketone, water, unfltrd µg/L (78133)	Iso-propyl-benzene water unfltrd µg/L (77223)	Methyl acrylo-nitrile water unfltrd µg/L (81593)	Methyl acryl-ate, water, unfltrd µg/L (49991)	Methyl methac-rylate, water, unfltrd µg/L (81597)	Methyl tert-pentyl ether, water, unfltrd µg/L (50005)	meta-+ para-Xylene, water, unfltrd µg/L (85795)	Naphth-alene, water, unfltrd µg/L (34696)	Methyl n-butyl ketone, water, unfltrd µg/L (77103)	n-Butyl benzene water unfltrd µg/L (77342)	n-propyl-benzene water unfltrd µg/L (77224)
CUMBERLAND COUNTY													
05-25-05	<.1	<.50	<.4	<.04	<.4	<1.0	<.2	<.04	<.06	<.5	<.4	<.1	<.04
05-25-05	<.1	<.50	<.4	<.04	<.4	<1.0	<.2	<.04	<.06	<.5	<.4	<.1	<.04
05-25-05	--	--	--	--	--	--	--	--	--	--	--	--	--
05-25-05	--	--	--	--	--	--	--	--	--	--	--	--	--
07-05-05	<.1	<.50	<.4	<.04	<.4	<1.0	<.2	<.04	<.06	<.5	<.4	<.1	<.04
MONTGOMERY COUNTY													
06-29-05	--	--	--	--	--	--	--	--	--	--	--	--	--
07-05-05	<.1	<.50	<.4	<.04	<.4	<1.0	<.2	<.04	<.06	<.5	<.4	<.1	<.04

**GROUND-WATER DATA COLLECTED AT SPECIAL-STUDY SITES  
DELAWARE RIVER BASIN NAWQA PROJECT**

QUALITY-CONTROL DATA, WATER YEAR OCTOBER 2004 TO SEPTEMBER 2005

Date	o-Xylene, water, unfltrd µg/L (77135)	sec-Butylbenzene, water, unfltrd µg/L (77350)	Styrene, water, unfltrd µg/L (77128)	t-Butyl ethyl ether, water, unfltrd µg/L (50004)	Methyl t-butyl ether, water, unfltrd µg/L (78032)	tert-Butylbenzene, water, unfltrd µg/L (77353)	Tetra-chloro-ethene, water, unfltrd µg/L (34475)	Tetra-chloro-methane, water, unfltrd µg/L (32102)	Tetra-hydro-furan, water, unfltrd µg/L (81607)	Toluene, water, unfltrd µg/L (34010)	Toluene -d8, surrog, Sch2090, wat unf percent recovery (99833)	trans-1,2-Di-chloro-ethene, water, unfltrd µg/L (34546)	trans-1,3-Di-chloro-propene, water, unfltrd µg/L (34699)
CUMBERLAND COUNTY													
05-25-05	<.04	<.06	<.04	<.03	<.1	<.06	<.03	<.06	<1	<.02	92.5	<.03	<.09
05-25-05	<.04	<.06	<.04	<.03	<.1	<.06	<.03	<.06	<1	E.01	92.7	<.03	<.09
05-25-05	--	--	--	--	--	--	--	--	--	--	--	--	--
05-25-05	--	--	--	--	--	--	--	--	--	--	--	--	--
07-05-05	<.04	<.06	<.04	<.03	<.1	<.06	<.03	<.06	<1	<.02	105	<.03	<.09

MONTGOMERY COUNTY													
06-29-05	--	--	--	--	--	--	--	--	--	--	--	--	--
07-05-05	<.04	<.06	<.04	<.03	<.1	<.06	<.03	<.06	<1	<.02	106	<.03	<.09

Date	trans-1,4-Di-chloro-2-butene, wat unf µg/L (73547)	Tri-bromo-methane, water, unfltrd µg/L (32104)	Tri-chloro-ethene, water, unfltrd µg/L (39180)	Tri-chloro-fluoro-methane, water, unfltrd µg/L (34488)	Tri-chloro-methane, water, unfltrd µg/L (32106)	Vinyl chlor-ide, water, unfltrd µg/L (39175)	Di-chlor-vo-s, water, fltrd, µg/L (38775)	Uranium natural water, fltrd, µg/L (22703)	Lot no. first, inor-ganic grade water, number (99200)	Lot no. first, VOC-free water, number (99204)	Number of TICS from VOC by GCMS (99871)	Purpose site visit, code (50280)	Sample purpose code (71999)
CUMBERLAND COUNTY													
05-25-05	<.7	<.10	<.04	<.08	<.02	<.1	--	--	--	80501	.0	2098	15.00
05-25-05	<.7	<.10	<.04	<.08	E.07	<.1	--	--	--	80501	.0	2098	15.00
05-25-05	--	--	--	--	--	--	--	<.04	1406620	--	--	2098	15.00
05-25-05	--	--	--	--	--	--	--	<.04	1406620	--	--	2098	15.00
07-05-05	<.7	<.10	<.04	<.08	<.02	<.1	--	--	--	80501	.0	2098	15.00

MONTGOMERY COUNTY													
06-29-05	--	--	--	--	--	--	--	<.04	1406620	--	--	2098	15.00
07-05-05	<.7	<.10	<.04	<.08	<.02	<.1	<.01	--	--	80501	.0	2098	15.00

Date	Sample volume, Sched 2003, ml (99972)	Source of blank solu-tion, code (99101)	Type of blank sample, code (99102)	Type of blank solu-tion, code (99100)
CUMBERLAND COUNTY				
05-25-05	--	10.00	1.00	50.00
05-25-05	--	10.00	80.00	50.00
05-25-05	--	10.00	1.00	10.00
05-25-05	--	10.00	80.00	10.00
07-05-05	--	10.00	1.00	50.00
MONTGOMERY COUNTY				
06-29-05	--	10.00	100.00	10.00
07-05-05	898	10.00	100.00	50.00