



2005 Water Year
LACKAWAXEN RIVER BASIN
01430000 Lackawaxen River near Honesdale, PA

Latitude: 41° 33' 43"

Longitude: 075° 14' 54"

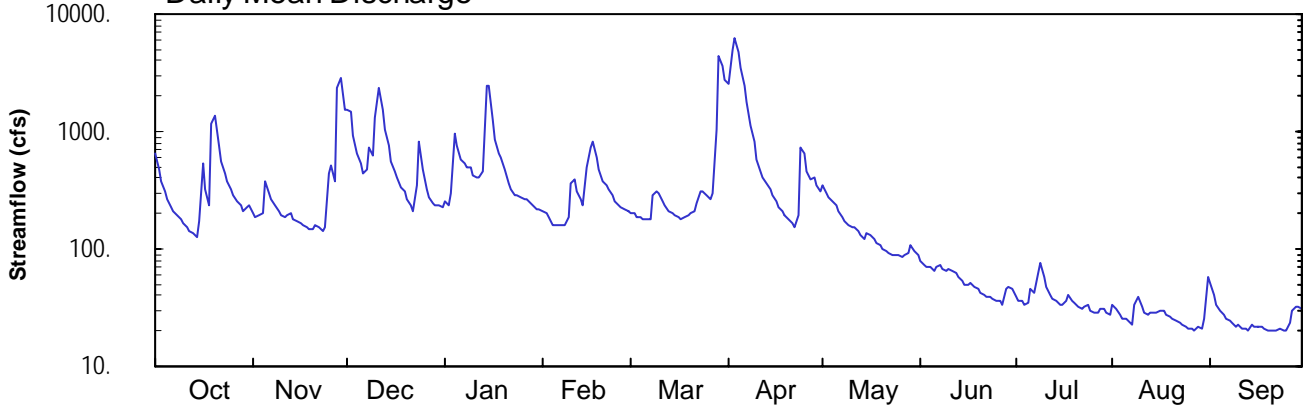
Hydrologic Unit Code: 02040103

Wayne County

Datum: 946.34 feet

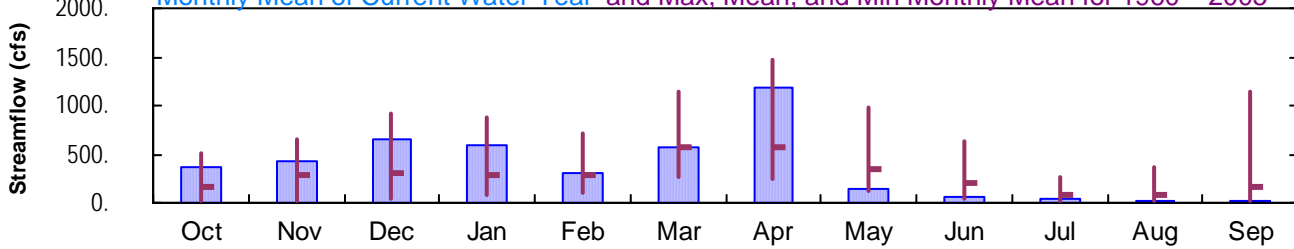
Drainage Area: 164. mi²

Daily Mean Discharge

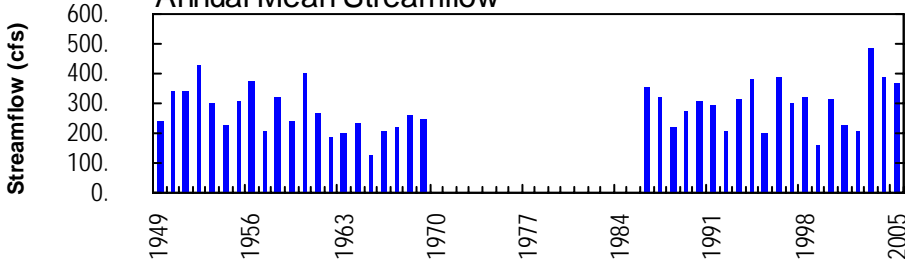


Monthly Statistics

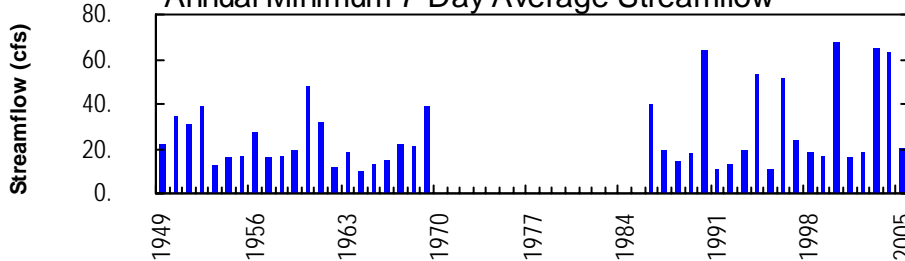
Monthly Mean of Current Water Year and Max, Mean, and Min Monthly Mean for 1960 – 2005



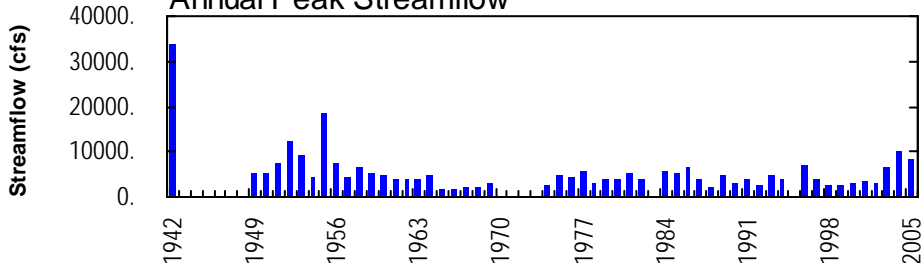
Annual Mean Streamflow



Annual Minimum 7-Day Average Streamflow



Annual Peak Streamflow



LACKAWAXEN RIVER BASIN

01430000 LACKAWAXEN RIVER NEAR HONSDALE, PA

LOCATION.--Lat 41°33'43", long 75°14'54", Wayne County, Hydrologic Unit 02040103, on right bank at Lemnitzer Bridge (Brown Street), on U.S. Highway 6, and 1.2 mi downstream from Dyberry Creek and Honesdale.

DRAINAGE AREA.--164 mi².

PERIOD OF RECORD.--October 1948 to September 1969, October 1985 to current year. Occasional discharge measurements and annual maximums, water years 1974-85.

REVISED RECORDS.--WDR PA 90-1: 1989. WDR PA 94-1: 1989(M).

GAGE.--Water-stage recorder. Datum of gage is 946.34 ft above National Geodetic Vertical Datum of 1929.

REMARKS.--Records good except those for estimated daily discharges, which are poor. Flow regulated since 1960 by Prompton Reservoir (station 01428900) and at high flow since 1959 by General Edgar Jadwin Reservoir (station 01429400). Several measurements of water temperature were made during the year. Satellite and landline telemetry at station.

EXTREMES OUTSIDE PERIOD OF RECORD.--The flood of May 1942 reached a stage of 24.5 ft, from data furnished by Corps of Engineers, discharge about 34,000 ft³/s.

DISCHARGE, CUBIC FEET PER SECOND, WATER YEAR OCTOBER 2004 TO SEPTEMBER 2005
DAILY MEAN VALUES

DAY	OCT	NOV	DEC	JAN	FEB	MAR	APR	MAY	JUN	JUL	AUG	SEP
1	641	206	1550	250	e210	e200	2510	344	80	40	34	51
2	470	189	1490	237	e200	e200	4940	303	74	36	31	40
3	383	191	909	296	e190	e190	6350	274	69	36	28	34
4	312	199	659	957	e160	e190	4840	254	70	33	26	30
5	263	373	529	758	e160	e180	3490	233	66	35	25	28
6	227	297	441	580	e160	e180	2420	211	72	46	25	26
7	207	260	471	538	159	179	1830	190	73	42	23	25
8	191	237	734	499	162	e290	1120	173	67	62	33	23
9	178	213	632	498	183	e310	818	162	65	77	39	22
10	165	196	1330	430	369	e300	570	156	67	57	32	22
11	152	185	2350	404	394	e260	461	152	65	47	29	21
12	142	194	1550	415	312	232	407	141	62	41	28	21
13	135	202	1020	464	267	214	369	129	57	38	e29	20
14	127	182	755	2460	234	202	327	123	53	36	e29	22
15	170	170	553	2460	501	194	286	137	49	34	e29	22
16	530	166	451	1280	742	183	255	131	50	34	e30	22
17	321	159	400	870	811	179	229	121	51	37	29	22
18	240	152	337	e660	597	185	208	113	48	40	27	21
19	1160	147	309	e600	e470	193	192	109	46	37	26	20
20	1370	147	e270	e480	e370	200	176	102	43	34	26	20
21	773	158	e240	e360	350	212	168	96	41	32	25	20
22	559	152	207	e320	321	241	156	91	40	31	24	20
23	443	142	352	e290	286	308	192	89	39	32	22	21
24	372	152	813	e290	e260	306	739	88	38	34	22	20
25	321	435	473	e280	e240	285	651	88	37	30	21	20
26	286	512	328	e270	e230	269	451	87	36	28	21	23
27	258	370	e280	e270	e220	304	391	88	34	28	21	30
28	232	2320	e250	e250	e210	1030	412	94	46	31	22	32
29	211	2920	238	e240	---	4370	347	107	47	31	21	32
30	229	1560	232	e220	---	3570	316	95	46	28	26	31
31	232	---	230	e220	---	2790	---	89	---	27	59	---
TOTAL	11300	12786	20383	18146	8768	17946	35621	4570	1631	1174	862	761
MEAN	365	426	658	585	313	579	1187	147	54.4	37.9	27.8	25.4
MAX	1370	2920	2350	2460	811	4370	6350	344	80	77	59	51
MIN	127	142	207	220	159	179	156	87	34	27	21	20

e Estimated.

LACKAWAXEN RIVER BASIN

01430000 LACKAWAXEN RIVER NEAR HONSDALE, PA--Continued

STATISTICS OF MONTHLY MEAN DATA FOR WATER YEARS 1960 - 1969, 1986 - 2005, BY WATER YEAR (WY) (SINCE REGULATION)

	OCT	NOV	DEC	JAN	FEB	MAR	APR	MAY	JUN	JUL	AUG	SEP
MEAN	166	294	312	286	281	564	569	337	202	91.7	88.3	159
MAX	504	650	925	884	716	1133	1464	985	634	255	364	1140
(WY)	2003	1987	1997	1996	1990	1986	1993	1989	2003	1996	1994	2003
MIN	14.5	16.5	39.1	73.5	106	261	240	123	43.9	20.3	17.2	12.3
(WY)	1965	1965	1999	1961	1963	1965	1988	2001	1962	1965	1964	1964

SUMMARY STATISTICS FOR 2004 CALENDAR YEAR FOR 2005 WATER YEAR WATER YEARS 1960 - 1969 1986 - 2005

ANNUAL TOTAL	135381	133948	
ANNUAL MEAN	370	367	279
HIGHEST ANNUAL MEAN			484
LOWEST ANNUAL MEAN			130
HIGHEST DAILY MEAN	6920	Sep 18	6920
LOWEST DAILY MEAN	54	Jul 11	20
ANNUAL SEVEN-DAY MINIMUM	63	Jul 6	20
MAXIMUM PEAK FLOW			8550
MAXIMUM PEAK STAGE			9.62
INSTANTANEOUS LOW FLOW			6.2
10 PERCENT EXCEEDS	774	740	610
50 PERCENT EXCEEDS	210	190	152
90 PERCENT EXCEEDS	93	26	29

STATISTICS OF MONTHLY MEAN DATA FOR WATER YEARS 1949 - 1959, BY WATER YEAR (WY) (PRIOR TO REGULATION)

	OCT	NOV	DEC	JAN	FEB	MAR	APR	MAY	JUN	JUL	AUG	SEP
MEAN	151	281	412	377	364	538	746	322	126	112	125	83.1
MAX	955	520	649	669	664	788	1458	592	304	425	865	189
(WY)	1956	1956	1951	1962	1951	1951	1958	1952	1956	1952	1955	1952
MIN	37.9	80.6	154	130	127	291	379	108	47.8	26.2	20.6	26.2
(WY)	1949	1958	1956	1956	1958	1949	1955	1951	1959	1955	1953	1957

SUMMARY STATISTICS WATER YEARS 1949 - 1959

ANNUAL MEAN	302
HIGHEST ANNUAL MEAN	428
LOWEST ANNUAL MEAN	209
HIGHEST DAILY MEAN	8920
LOWEST DAILY MEAN	12
ANNUAL SEVEN DAY MINIMUM	12
MAXIMUM PEAK FLOW	18600
MAXIMUM PEAK STAGE	15.52
ANNUAL RUNOFF (CFSM)	1.84
ANNUAL RUNOFF (INCHES)	25.06
10 PERCENT EXCEEDS	695
50 PERCENT EXCEEDS	152
90 PERCENT EXCEEDS	32

- a Also Sept. 19-22, 24, 25.
- b From rating curve extended above 11,000 ft³/s.

