



2005 Water Year SCHUYLKILL RIVER BASIN

01472810 East Branch Perkiomen Creek near Schwenksville, PA

Latitude: 40° 15' 31"

Longitude: 075° 25' 45"

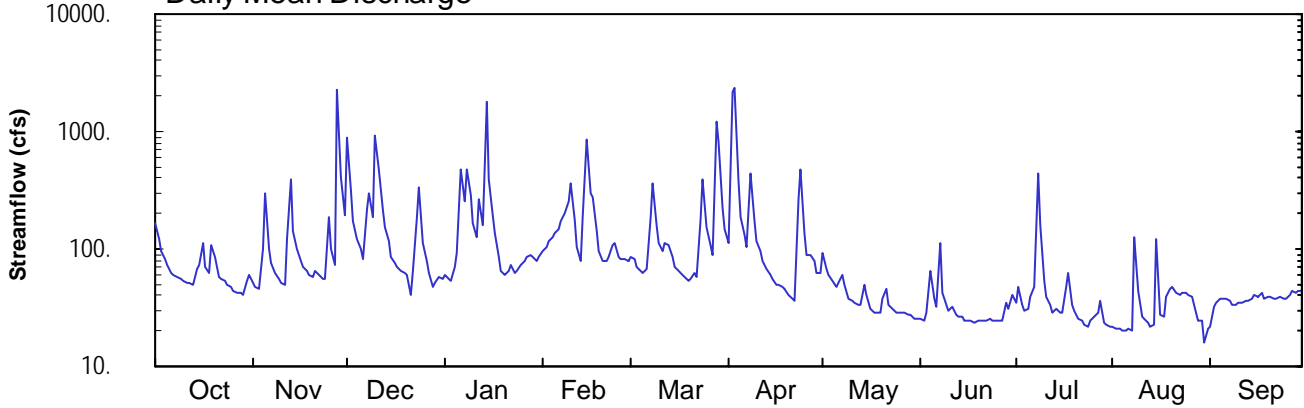
Hydrologic Unit Code: 02040203

Montgomery County

Datum: 150 feet

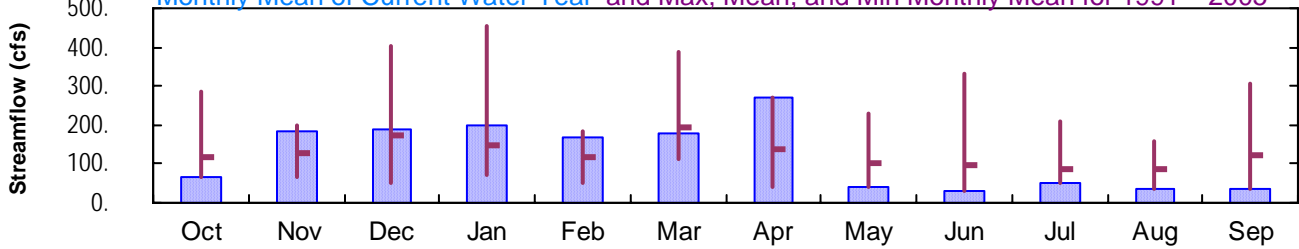
Drainage Area: 58.7 mi²

Daily Mean Discharge

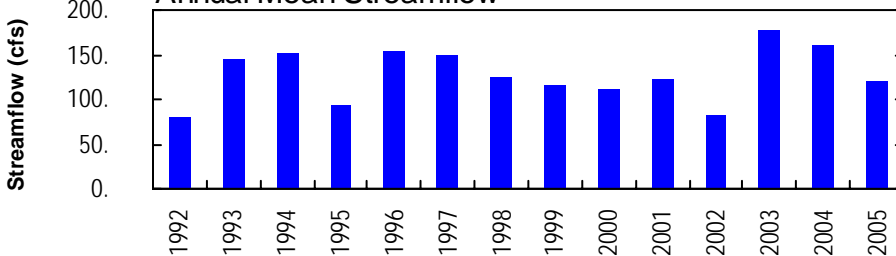


Monthly Statistics

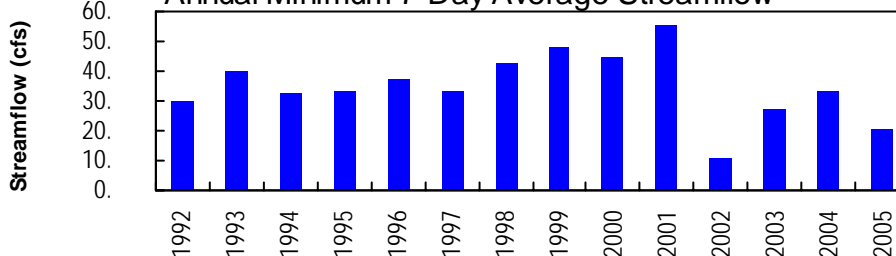
Monthly Mean of Current Water Year and Max, Mean, and Min Monthly Mean for 1991 – 2005



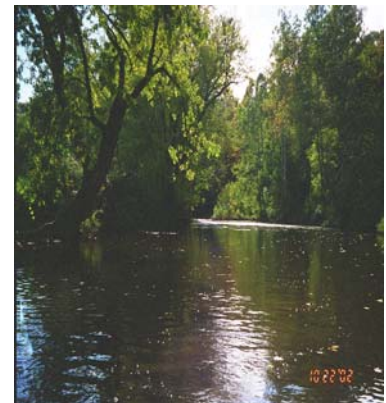
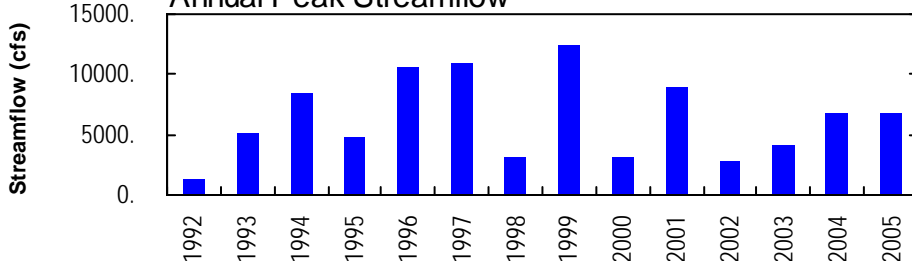
Annual Mean Streamflow



Annual Minimum 7-Day Average Streamflow



Annual Peak Streamflow



SCHUYLKILL RIVER BASIN

01472810 EAST BRANCH PERKIOMEN CREEK NEAR SCHWENKSVILLE, PA

LOCATION.--Lat 40°15'31", long 75°25'45", Montgomery County, Hydrologic Unit 02040203, on left bank 600 ft upstream from Bergey's Mill bridge, and 2.0 mi east of Schwenksville.

DRAINAGE AREA.--58.7 mi², not including distributary.

PERIOD OF RECORD.--January 1991 to current year.

REVISED RECORD.--WDR PA-96-1: 1993-95(P). WDR PA-99-1: 1996, 1997 (M).

GAGE.--Water-stage recorder and crest-stage gage. Elevation of gage is 150 ft above National Geodetic Vertical Datum of 1929, from topographic map.

REMARKS.--Records good except those for period Oct. 1 to Nov. 28, which is fair and those for estimated daily discharges, which are poor. Diversion since August 1989 from Delaware River at Point Pleasant to Bradshaw Reservoir (Geddes Creek Basin). Pumpage from reservoir enters stream about 19 mi upstream of gage. See station 01472618, Distributary from Bradshaw Reservoir, for pumpage data. Peak flows are unregulated. Several measurements of water temperature were made during the year. Satellite and landline telemetry at station.

PEAK DISCHARGES FOR CURRENT YEAR.--Peak discharges greater than base discharge of 2,500 ft³/s and maximum (*):

Date	Time	Discharge ft ³ /s	Gage Height (ft)	Date	Time	Discharge ft ³ /s	Gage Height (ft)
Nov. 28	1400	4,840	8.96	Mar. 28	2130	3,730	7.95
Jan. 14	1230	3,850	8.07	Apr. 3	0100	*6,690	*10.42

DISCHARGE, CUBIC FEET PER SECOND, WATER YEAR OCTOBER 2004 TO SEPTEMBER 2005
DAILY MEAN VALUES

DAY	OCT	NOV	DEC	JAN	FEB	MAR	APR	MAY	JUN	JUL	AUG	SEP
1	169	51	881	60	e95	85	114	91	25	35	22	22
2	120	47	308	56	e105	84	2180	68	25	48	21	32
3	97	46	175	53	e115	71	2320	61	28	34	21	35
4	82	101	123	71	e125	65	377	53	65	30	20	38
5	72	302	98	92	134	63	187	48	38	31	20	38
6	64	100	82	475	146	68	134	51	32	39	21	38
7	60	75	221	251	171	189	105	59	113	47	20	36
8	57	63	297	483	203	367	438	50	42	436	126	34
9	55	56	185	292	256	157	173	38	33	161	44	33
10	53	51	942	167	363	112	118	37	30	54	27	35
11	52	50	474	126	178	95	96	35	32	39	25	35
12	51	122	220	263	104	114	78	34	28	33	23	36
13	50	385	151	160	80	106	67	33	27	29	22	36
14	67	142	115	1790	187	84	60	49	26	31	23	38
15	74	99	87	398	870	72	55	41	25	29	123	41
16	114	80	75	194	301	66	49	31	25	29	27	39
17	71	71	72	136	275	62	49	29	24	48	26	43
18	63	66	65	e85	140	58	47	29	24	63	39	38
19	106	60	63	e65	96	53	45	28	25	34	45	39
20	86	58	e60	e60	80	55	41	38	25	30	47	38
21	59	65	e40	e65	79	63	38	46	25	26	43	38
22	56	61	e65	e72	87	58	37	33	24	24	41	38
23	53	57	189	e62	110	181	263	31	26	23	42	39
24	49	56	331	e65	112	395	482	29	25	22	42	38
25	47	186	114	e72	86	153	135	28	24	24	41	38
26	45	100	e80	e80	82	108	88	29	24	26	39	40
27	43	74	e63	e85	82	90	90	29	25	29	33	44
28	42	2240	e48	e90	80	1220	78	27	35	36	25	42
29	41	403	e52	e85	---	809	62	27	31	24	25	44
30	54	198	58	e80	---	228	63	26	41	23	16	44
31	59	---	57	e87	---	145	---	26	---	22	21	---
TOTAL	2111	5465	5791	6120	4742	5476	8069	1234	972	1559	1110	1129
MEAN	68.1	182	187	197	169	177	269	39.8	32.4	50.3	35.8	37.6
MAX	169	2240	942	1790	870	1220	2320	91	113	436	126	44
MIN	41	46	40	53	79	53	37	26	24	22	16	22

STATISTICS OF MONTHLY MEAN DATA FOR WATER YEARS 1991 - 2005, BY WATER YEAR (WY)

MEAN	119	129	172	149	120	194	137	102	94.6	87.5	88.9	120
MAX	287	201	405	456	183	388	269	230	330	208	159	305
(WY)	1997	1994	1997	1996	2001	1994	2005	1998	2003	2004	1994	2004
MIN	65.1	66.0	52.1	70.5	49.0	113	43.2	39.8	32.4	50.3	35.8	37.6
(WY)	2002	2002	1996	2004	2002	2004	1992	2005	2005	2005	2005	2005

e Estimated.

SCHUYLKILL RIVER BASIN

01472810 EAST BRANCH PERKIOMEN CREEK NEAR SCHWENKSVILLE, PA--Continued

SUMMARY STATISTICS	FOR 2004 CALENDAR YEAR		FOR 2005 WATER YEAR		WATER YEARS 1991 - 2005	
ANNUAL TOTAL	49996		43778			
ANNUAL MEAN	137		120		128	
HIGHEST ANNUAL MEAN					178	2003
LOWEST ANNUAL MEAN					80.6	1992
HIGHEST DAILY MEAN	2970	Sep 18	2320	Apr 3	6020	Jan 19 1996
LOWEST DAILY MEAN	26	Sep 27	16	Aug 30	3.5	Sep 25 2002 ^a
ANNUAL SEVEN-DAY MINIMUM	33	Jun 30	21	Aug 1	11	Sep 19 2002
MAXIMUM PEAK FLOW			b 6690	Apr 3	b 12300	Sep 16 1999
MAXIMUM PEAK STAGE			10.42	Apr 3	14.03	Sep 16 1999
10 PERCENT EXCEEDS	250		210		207	
50 PERCENT EXCEEDS	63		58		72	
90 PERCENT EXCEEDS	41		25		45	

^a Result of no pumpage from the Delaware River diversion.

^b From rating curve extended above 2,840 ft³/s on basis of contracted-opening measurement of peak flow at gage height 14.03 ft.

