



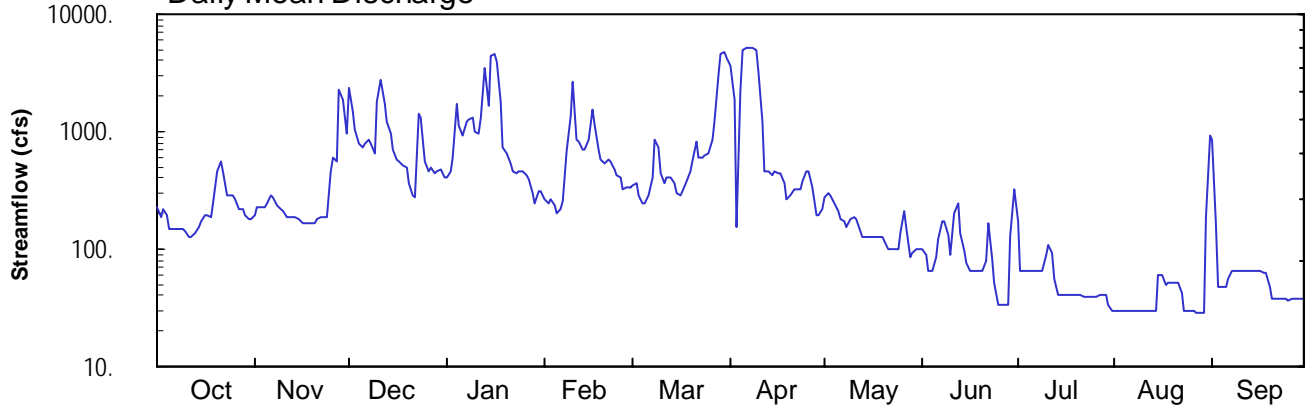
2005 Water Year
CHEMUNG RIVER BASIN
01518000 Tioga River at Tioga, PA

Latitude: 41° 54' 30"
Tioga County

Longitude: 077° 07' 47"
Datum: 1021.07 feet

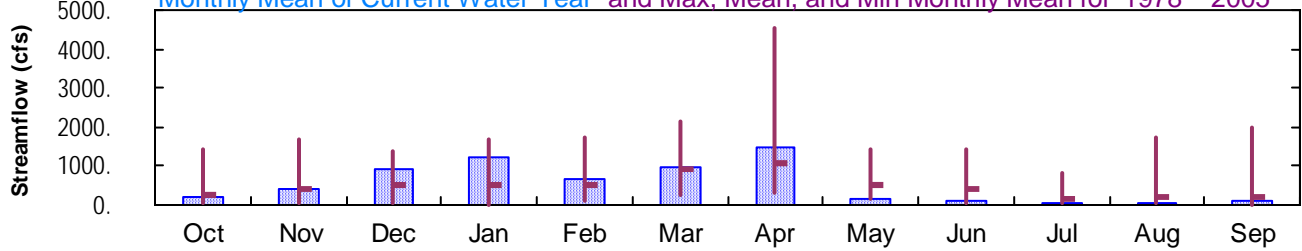
Hydrologic Unit Code: 02050104
Drainage Area: 282. mi²

Daily Mean Discharge

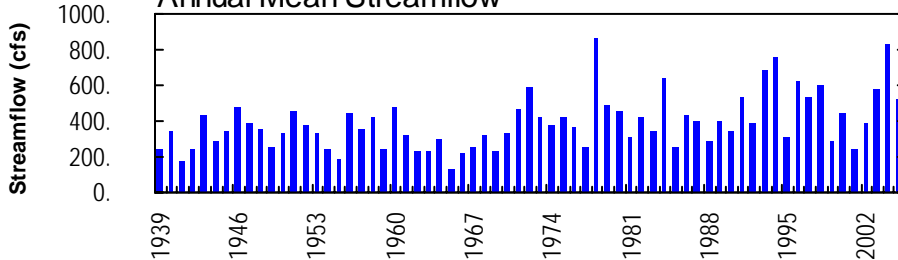


Monthly Statistics

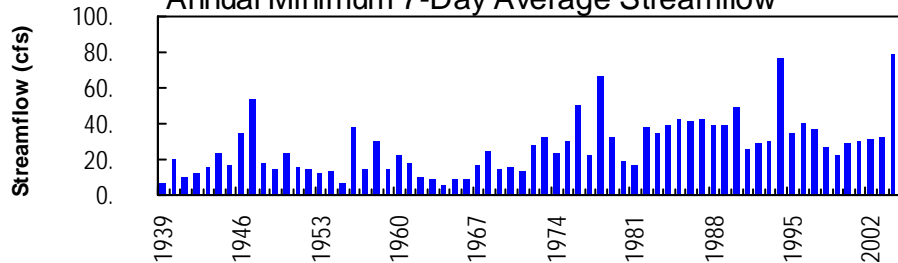
Monthly Mean of Current Water Year and Max, Mean, and Min Monthly Mean for 1978 – 2005



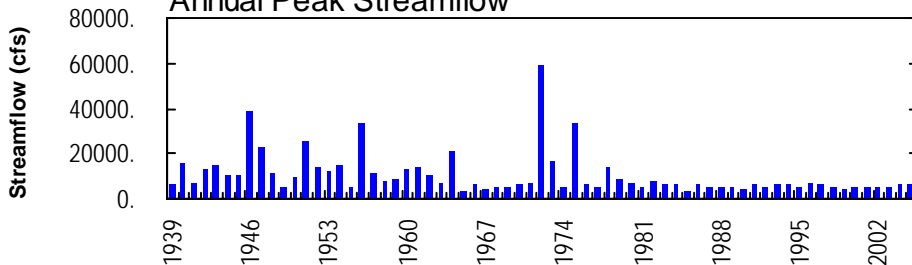
Annual Mean Streamflow



Annual Minimum 7-Day Average Streamflow



Annual Peak Streamflow



CHEMUNG RIVER BASIN

01518000 TIOGA RIVER AT TIOGA, PA

LOCATION.--Lat 41°54'30", long 77°07'47", Tioga County, Hydrologic Unit 02050104, on left bank 130 ft upstream from highway bridge on Township Route 667 at Tioga, 0.8 mi upstream from Crooked Creek, and 0.9 mi downstream from Tioga Dam.

DRAINAGE AREA.--282 mi².

PERIOD OF RECORD.--June 1938 to current year. Prior to October 1938 monthly discharge only, published in WSP 1302.

REVISED RECORDS.--WSP 871: 1938.

GAGE.--Water-stage recorder. Datum of gage is 1,021.07 ft above National Geodetic Vertical Datum of 1929. Prior to Sept. 9, 1953, at site 20 ft upstream at datum 2.11 ft higher. Sept. 9, 1953, to Aug. 10, 1954, at site 130 ft downstream at present datum.

REMARKS.--No estimated daily discharges. Record good. Discharges include flow diverted from Crooked Creek into Tioga River since Oct. 1, 1977. Flow regulated since November 1979 by Tioga Dam (station 01517900). Several measurements of water temperature were made during the year. Satellite telemetry at station.

DISCHARGE, CUBIC FEET PER SECOND, WATER YEAR OCTOBER 2004 TO SEPTEMBER 2005
DAILY MEAN VALUES

DAY	OCT	NOV	DEC	JAN	FEB	MAR	APR	MAY	JUN	JUL	AUG	SEP
1	231	197	2360	403	265	349	3610	277	99	175	30	842
2	188	230	1490	450	246	361	1870	293	88	66	30	168
3	222	230	1050	612	263	288	154	285	66	66	30	47
4	191	230	795	1740	235	247	2220	245	66	66	30	47
5	150	248	726	1120	202	247	5000	207	86	65	30	47
6	150	289	786	938	215	285	5170	180	121	65	30	56
7	150	273	868	1210	258	403	5180	173	171	64	30	65
8	150	232	795	1260	689	855	5130	156	173	64	30	65
9	150	215	662	1310	1370	720	4940	177	134	64	30	64
10	141	206	1830	1000	2610	437	3160	190	88	89	30	64
11	125	190	2720	961	848	369	1220	179	202	108	30	64
12	125	190	1710	1310	819	410	462	142	249	91	30	64
13	135	190	1220	3460	692	414	466	127	138	56	29	64
14	151	190	966	1680	700	367	424	127	95	41	30	64
15	172	182	705	4390	851	303	450	127	76	41	60	65
16	195	163	589	4580	1560	288	449	127	64	41	61	64
17	195	163	556	3930	1120	313	448	127	64	41	50	63
18	185	164	521	1830	696	373	357	127	64	41	51	63
19	249	164	490	745	575	461	263	127	64	41	51	48
20	459	164	363	652	534	556	286	118	64	41	51	37
21	551	177	288	532	570	830	322	99	80	41	52	37
22	459	186	280	458	549	609	322	99	164	40	42	37
23	287	186	1430	440	481	611	322	99	81	39	29	37
24	287	186	1310	452	416	637	382	99	51	39	30	37
25	287	461	559	452	406	646	450	135	34	39	30	37
26	266	609	467	429	329	848	457	210	34	40	30	37
27	215	547	491	391	330	1200	342	145	34	40	29	37
28	215	2270	444	304	329	3160	194	85	33	40	28	38
29	197	1870	458	241	---	4580	194	93	127	40	29	38
30	177	963	484	308	---	4810	216	99	322	33	185	38
31	178	---	412	314	---	4270	---	100	---	30	931	---
TOTAL	6833	11565	27825	37902	18158	30247	44460	4774	3132	1747	2158	2434
MEAN	220	386	898	1223	648	976	1482	154	104	56.4	69.6	81.1
MAX	551	2270	2720	4580	2610	4810	5180	293	322	175	931	842
MIN	125	163	280	241	202	247	154	85	33	30	28	37

CHEMUNG RIVER BASIN

01518000 TIOGA RIVER AT TIOGA, PA--Continued

REMARKS--Those data in the first set of statistics (1978-2005) represent flow past the gage including streamflow diverted into Tioga River from the adjacent Crooked Creek Basin since October 1977, and are not equivalent to natural streamflow conditions prior to this date.

STATISTICS OF MONTHLY MEAN DATA FOR WATER YEARS 1978 - 2005, BY WATER YEAR (WY) (SINCE REGULATION)

	OCT	NOV	DEC	JAN	FEB	MAR	APR	MAY	JUN	JUL	AUG	SEP
MEAN	251	421	515	519	532	943	1087	531	384	178	182	197
MAX (WY)	1454	1684	1377	1709	1716	2161	4544	1433	1404	825	1747	1992
MIN (WY)	1991	1978	1997	1996	1981	1979	1993	1989	1989	2004	1994	2004
MIN (WY)	34.5	31.2	36.2	22.7	111	238	323	136	41.5	32.5	28.4	20.8
MIN (WY)	1999	1981	1999	1981	1989	1981	1988	2001	1991	1991	1980	1980

SUMMARY STATISTICS FOR 2004 CALENDAR YEAR FOR 2005 WATER YEAR WATER YEARS 1978 - 2005

ANNUAL TOTAL	274182	191235	
ANNUAL MEAN	749	524	477
HIGHEST ANNUAL MEAN			862
LOWEST ANNUAL MEAN			241
HIGHEST DAILY MEAN	5960	Sep 22	5180
LOWEST DAILY MEAN	57	Jul 3	28
ANNUAL SEVEN-DAY MINIMUM	79	Jul 1	29
MAXIMUM PEAK FLOW			6320
MAXIMUM PEAK STAGE			7.07
INSTANTANEOUS LOW FLOW			a0.00
10 PERCENT EXCEEDS	1800	1220	1100
50 PERCENT EXCEEDS	396	207	195
90 PERCENT EXCEEDS	150	38	39

STATISTICS OF MONTHLY MEAN DATA FOR WATER YEARS 1939 - 1977, BY WATER YEAR (WY) (PRIOR TO REGULATION)

	OCT	NOV	DEC	JAN	FEB	MAR	APR	MAY	JUN	JUL	AUG	SEP
MEAN	145	291	350	271	346	790	753	516	254	93.4	77.0	89.9
MAX (WY)	1084	1061	978	787	814	1694	2124	1534	2397	471	380	1083
MIN (WY)	1956	1971	1974	1952	1976	1964	1958	1946	1972	1972	1947	1975
MIN (WY)	9.26	12.8	22.0	37.9	59.2	169	132	87.6	44.3	16.5	12.2	6.68
MIN (WY)	1964	1965	1965	1961	1963	1969	1946	1941	1962	1955	1966	1964

SUMMARY STATISTICS WATER YEARS 1939 - 1977

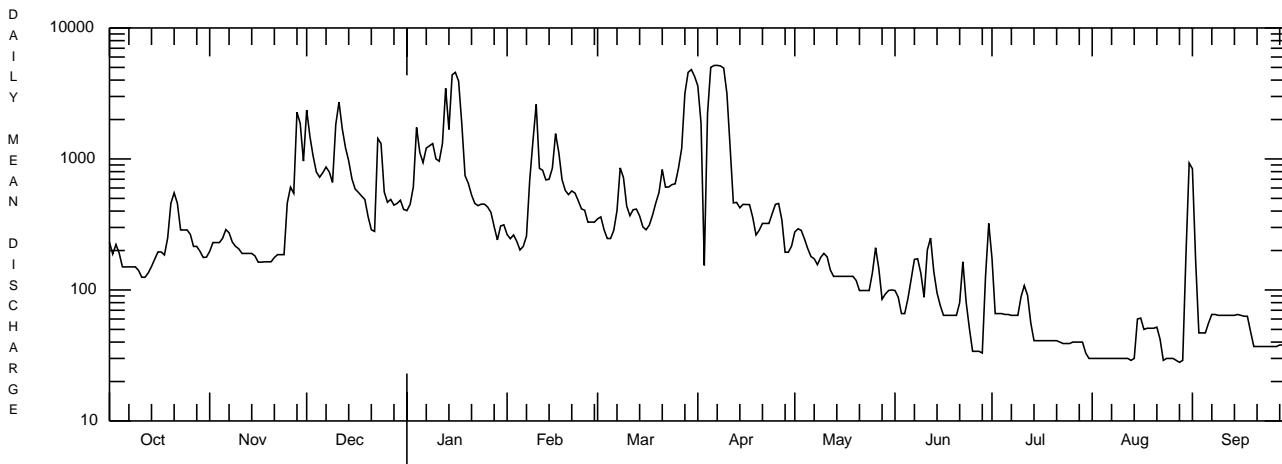
ANNUAL MEAN	331	
HIGHEST ANNUAL MEAN	583	1972
LOWEST ANNUAL MEAN	138	1965
HIGHEST DAILY MEAN	26900	Jun 23 1972
LOWEST DAILY MEAN	5.0	Sep 11 1964
ANNUAL SEVEN-DAY MINIMUM	5.3	Sep 8 1964
MAXIMUM PEAK FLOW	c59000	Jun 22 1972
MAXIMUM PEAK STAGE	d19.70	Jun 22 1972
INSTANTANEOUS LOW FLOW	4.5	Aug 10,11 1955
ANNUAL RUNOFF (CFSM)	1.17	
ANNUAL RUNOFF (INCHES)	15.95	
10 PERCENT EXCEEDS	780	
50 PERCENT EXCEEDS	130	
90 PERCENT EXCEEDS	23	

a Result of shutoff at Tioga Dam.

b Also Aug. 29, 1980.

c From rating curve extended above 8,000 ft³/s on basis of slope-area and contracted-opening measurement at gage height 15.47 ft, and slope-area measurement of peak flow.

d From floodmark.



OCTOBER 1, 2004 TO SEPTEMBER 30, 2005