



2005 Water Year
WEST BRANCH SUSQUEHANNA RIVER BASIN
01541303 West Branch Susquehanna River at Hyde, PA

Latitude: 41°00'16"

Longitude: 078°27'25"

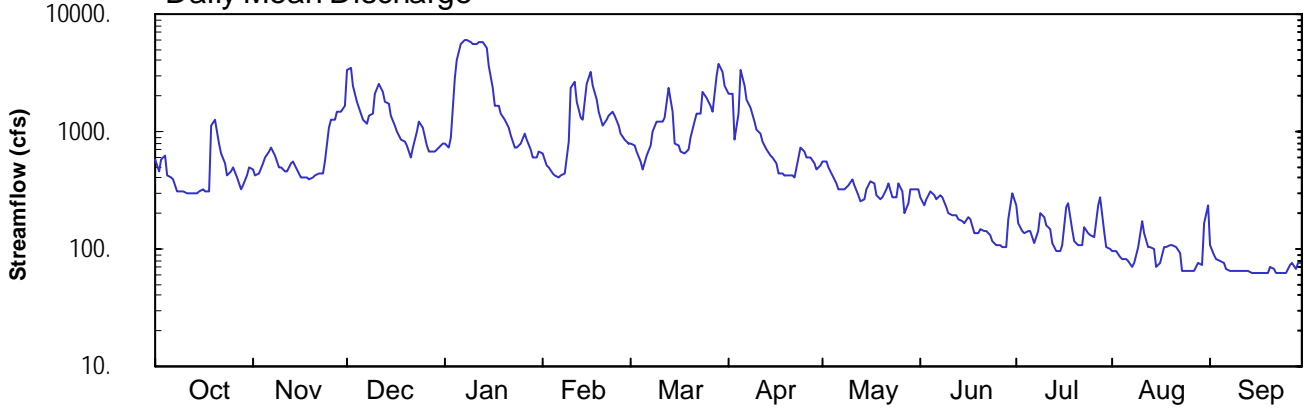
Hydrologic Unit Code: 02050201

Clearfield County

Datum: 1093.90 feet

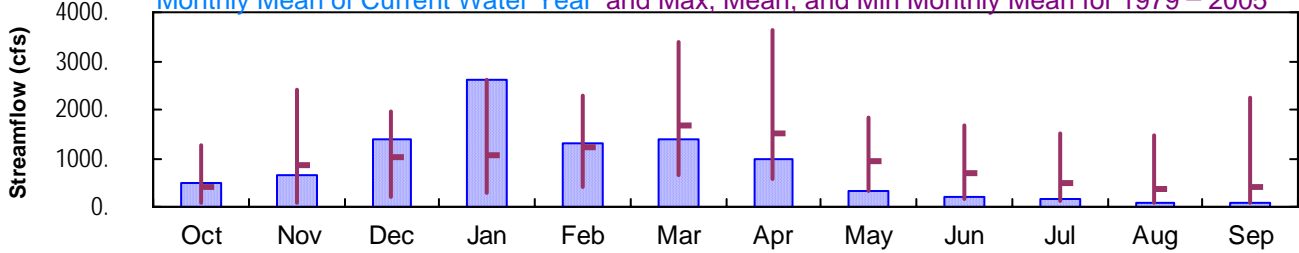
Drainage Area: 474. mi²

Daily Mean Discharge

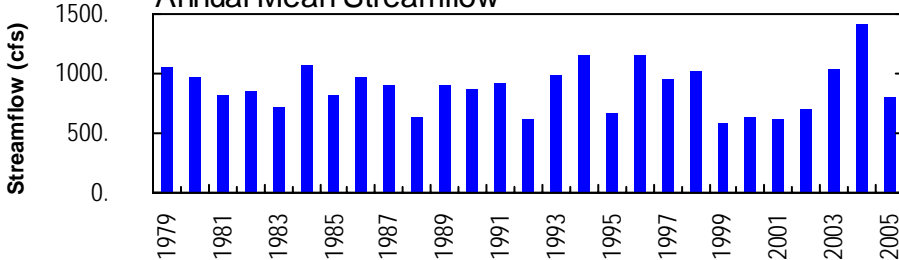


Monthly Statistics

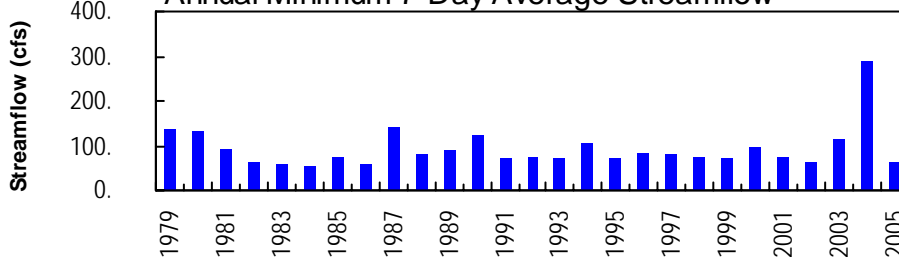
Monthly Mean of Current Water Year and Max, Mean, and Min Monthly Mean for 1979 – 2005



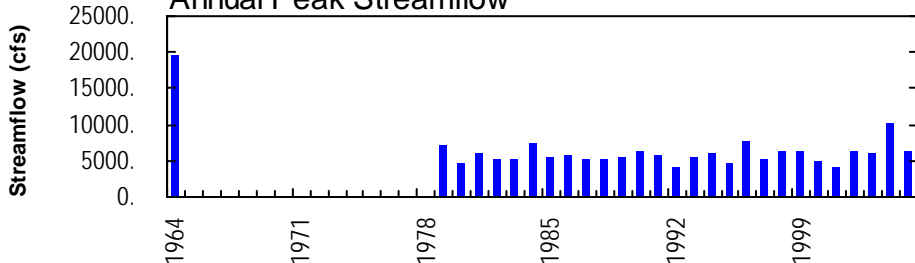
Annual Mean Streamflow



Annual Minimum 7-Day Average Streamflow



Annual Peak Streamflow



WEST BRANCH SUSQUEHANNA RIVER BASIN

01541303 WEST BRANCH SUSQUEHANNA RIVER AT HYDE, PA

LOCATION.--Lat 41°00'16", long 78°27'25", Clearfield County, Hydrologic Unit 02050201, on right bank 60 ft downstream from bridge at intersection of SR 1001 and State Highway 879 at Hyde.

DRAINAGE AREA.--474 mi².

PERIOD OF RECORD.--October 1978 to current year.

GAGE.--Water-stage recorder. Datum of gage is 1,093.90 ft above National Geodetic Vertical Datum of 1929.

REMARKS.--Records good except those for estimated daily discharges, which are poor. Flow regulated since November 1965 by Curwensville Dam (station 01541180) about 5 mi upstream. Several measurements of water temperature were made during the year. Satellite and landline telemetry at station.

EXTREMES OUTSIDE PERIOD OF RECORD.--Flood of Mar. 10, 1964, reached a stage of 18.1 ft, from floodmarks, discharge, about 19,400 ft³/s.

DISCHARGE, CUBIC FEET PER SECOND, WATER YEAR OCTOBER 2004 TO SEPTEMBER 2005
DAILY MEAN VALUES

DAY	OCT	NOV	DEC	JAN	FEB	MAR	APR	MAY	JUN	JUL	AUG	SEP
1	577	478	3370	789	e650	787	2120	560	278	240	98	110
2	459	416	3490	745	e520	771	2070	549	232	168	95	90
3	578	434	2410	879	e500	684	860	500	269	140	84	83
4	630	544	1780	2920	447	e550	1440	425	310	135	82	80
5	422	613	1420	4020	426	e480	3330	356	282	143	82	77
6	414	666	1270	5600	414	630	2460	323	266	143	80	67
7	395	726	1150	5930	416	e770	1850	321	287	113	70	66
8	314	624	1350	6030	447	e1000	1590	321	276	143	76	64
9	309	498	1430	5840	831	e1200	1200	346	228	202	103	64
10	305	493	2080	5680	2350	e1200	1050	395	201	183	174	64
11	302	455	2580	5550	2700	e1200	970	351	192	161	137	64
12	298	452	2190	5760	1820	1330	819	288	191	146	104	64
13	297	546	1820	5720	1310	2320	698	259	178	114	104	64
14	298	561	1700	5150	1280	1450	623	262	171	98	100	63
15	307	472	1360	3610	2600	779	601	326	168	97	69	62
16	324	403	1110	2360	3210	752	538	374	186	109	77	62
17	311	402	987	1680	2490	674	444	359	178	229	105	63
18	311	400	851	1640	1880	644	436	287	137	244	104	62
19	1100	397	837	1420	1470	707	422	260	134	150	107	62
20	1260	407	e750	1260	1150	875	418	276	146	115	107	70
21	794	422	e600	e1100	1240	1220	418	320	141	109	103	67
22	656	439	728	e920	1360	1400	414	358	141	107	92	63
23	535	435	e1000	e740	1460	1440	602	275	133	156	65	63
24	423	567	e1200	e720	1360	2180	728	274	118	138	64	62
25	457	1070	e1100	e800	1130	1970	665	356	109	130	64	62
26	492	1280	e760	e950	945	1670	606	306	106	124	64	73
27	406	1280	687	e850	865	1460	594	205	106	240	66	75
28	325	1460	e670	e700	789	2930	531	245	104	278	75	67
29	355	1460	668	e600	---	3790	469	322	179	144	72	77
30	419	1690	731	e600	---	3180	513	321	294	105	163	77
31	486	---	788	e680	---	2440	---	322	---	100	240	---
TOTAL	14559	20090	42867	81243	36060	42483	29479	10442	5741	4704	3026	2087
MEAN	470	670	1383	2621	1288	1370	983	337	191	152	97.6	69.6
MAX	1260	1690	3490	6030	3210	3790	3330	560	310	278	240	110
MIN	297	397	600	600	414	480	414	205	104	97	64	62

STATISTICS OF MONTHLY MEAN DATA FOR WATER YEARS 1979 - 2005, BY WATER YEAR (WY)

MEAN	391	866	1022	1046	1218	1667	1519	921	680	487	366	413
MAX	1264	2425	1944	2621	2302	3377	3648	1831	1663	1497	1487	2234
(WY)	1980	1998	1991	2005	1986	1979	1993	1989	1989	1996	2003	2004
MIN	97.0	97.2	216	289	392	647	590	307	154	130	97.6	69.6
(WY)	1983	1999	1999	2001	1980	1990	1997	1986	1999	1999	2005	2005

e Estimated.

WEST BRANCH SUSQUEHANNA RIVER BASIN

01541303 WEST BRANCH SUSQUEHANNA RIVER AT HYDE, PA--Continued

SUMMARY STATISTICS	FOR 2004 CALENDAR YEAR		FOR 2005 WATER YEAR		WATER YEARS 1979 - 2005	
ANNUAL TOTAL	481653		292781			
ANNUAL MEAN	1316		802		881	
HIGHEST ANNUAL MEAN					1423	2004
LOWEST ANNUAL MEAN					576	1999
HIGHEST DAILY MEAN	6140	Mar 7	6030	Jan 8	6850	Mar 8 1979
LOWEST DAILY MEAN	218	Sep 7	62	Sep 15 ^a	46	Sep 14 1982
ANNUAL SEVEN-DAY MINIMUM	288	Sep 1	63	Sep 13	53	Oct 6 1983
MAXIMUM PEAK FLOW			b 6240	Jan 8	b 10100	Sep 17 2004
MAXIMUM PEAK STAGE			9.96	Jan 8	12.63	Sep 17 2004
10 PERCENT EXCEEDS	3200		1860		2080	
50 PERCENT EXCEEDS	772		426		524	
90 PERCENT EXCEEDS	379		77		121	

^a Also Sept. 16, 18, 19, 24, 25.

^b From rating curve extended above 6,000 ft³/s.

