



2005 Water Year  
WEST BRANCH SUSQUEHANNA RIVER BASIN  
01553500 West Branch Susquehanna River at Lewisburg, PA

Latitude: 40° 58 ' 03"

Longitude: 076° 52 ' 36"

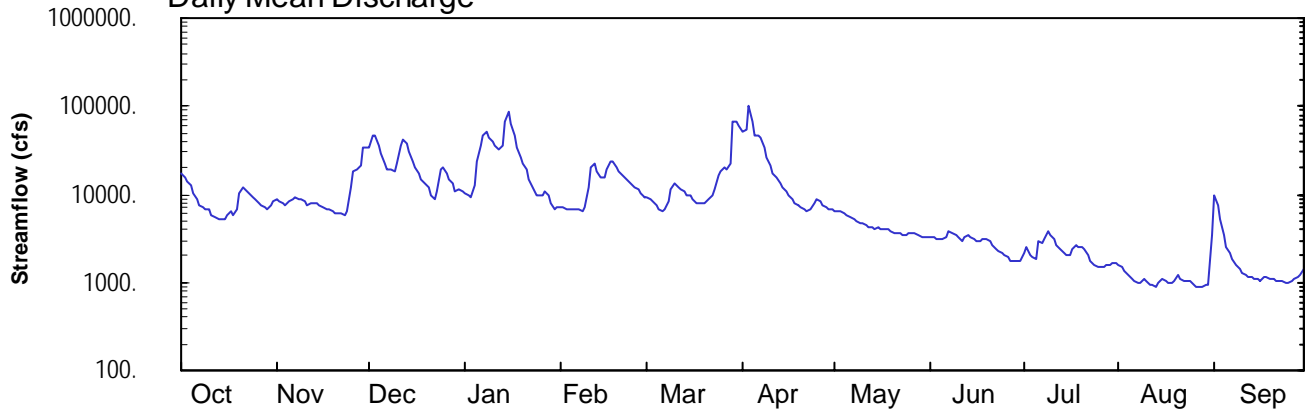
Hydrologic Unit Code: 02050206

Northumberland County

Datum: 428.20 feet

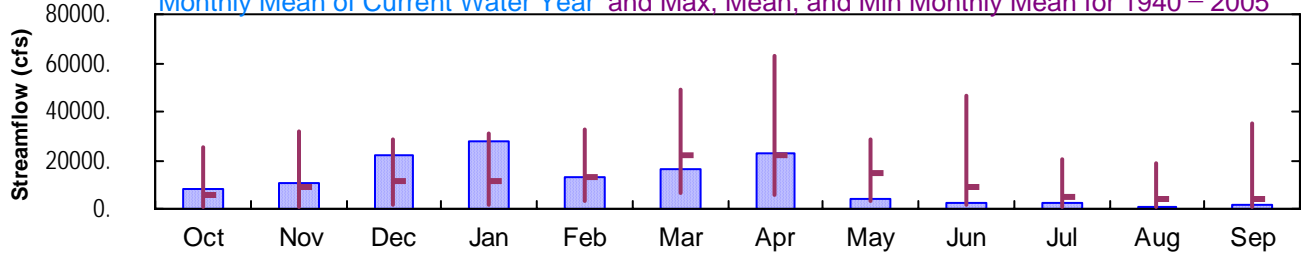
Drainage Area: 6847. mi<sup>2</sup>

### Daily Mean Discharge

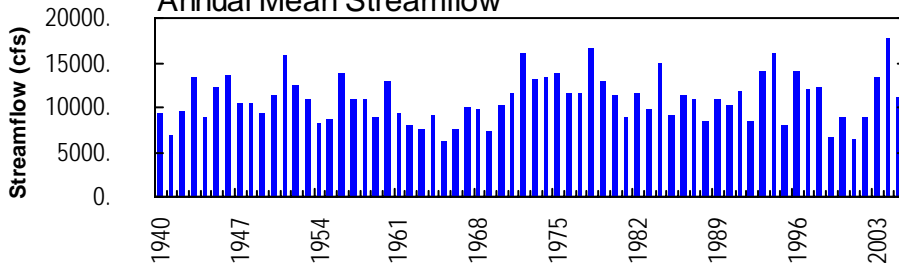


### Monthly Statistics

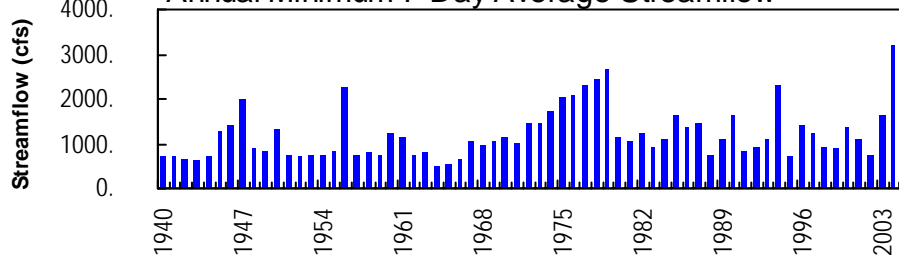
Monthly Mean of Current Water Year and Max, Mean, and Min Monthly Mean for 1940 – 2005



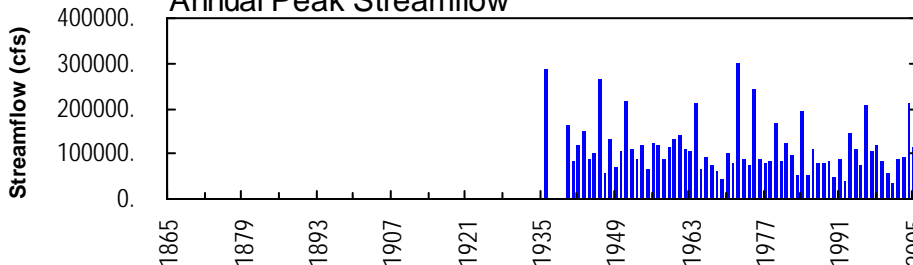
### Annual Mean Streamflow



### Annual Minimum 7-Day Average Streamflow



### Annual Peak Streamflow



## WEST BRANCH SUSQUEHANNA RIVER BASIN

01553500 WEST BRANCH SUSQUEHANNA RIVER AT LEWISBURG, PA  
(Pennsylvania Water-Quality Network Station)

**LOCATION.**--Lat 40°58'03", long 76°52'36", Northumberland County, Hydrologic Unit 02050206, at downstream side of left abutment of Market Street bridge on State Highway 45 at Lewisburg, 0.2 mi downstream from Buffalo Creek, and 7.4 mi upstream from mouth.

**DRAINAGE AREA.**--6,847 mi<sup>2</sup>.

## WATER-DISCHARGE RECORDS

**PERIOD OF RECORD.**--October 1939 to current year. September 1913 to August 1923 (gage heights only), are contained in reports of Water Supply Commission of Pennsylvania or Pennsylvania Department of Forests and Waters.

**GAGE.**--Water-stage recorder. Datum of gage is 428.20 ft above National Geodetic Vertical Datum of 1929. Sept. 21, 1913, to Aug. 31, 1923, Dec. 7, 1939, to July 2, 1940, and Oct. 20, 1987, to Sept. 30, 1988, nonrecording gage at same site and datum. Since Oct. 1, 1942, water-stage recorder for Susquehanna River at Sunbury (station 01553990) used as an auxiliary gage.

**REMARKS.**--Records good except those for estimated daily discharges, which are poor. Flow slightly regulated by 6 flood-control reservoirs, which have a combined capacity of 440,200 acre-ft. Satellite and landline telemetry at station.

**EXTREMES OUTSIDE PERIOD OF RECORD.**--Flood of Mar. 19, 1936, reached a stage of 32.1 ft, from floodmarks (backwater from Susquehanna River), discharge, 287,000 ft<sup>3</sup>/s from slope-area measurement at Watsonstown, 8.0 mi upstream.

DISCHARGE, CUBIC FEET PER SECOND, WATER YEAR OCTOBER 2004 TO SEPTEMBER 2005  
DAILY MEAN VALUES

DAY	OCT	NOV	DEC	JAN	FEB	MAR	APR	MAY	JUN	JUL	AUG	SEP
1	17400	8660	34100	10200	e7300	9140	51200	6540	3330	2120	1570	9910
2	15200	8260	46900	9650	e7200	9000	52900	6490	3260	2520	1500	7690
3	13800	7750	46900	9260	e6700	8350	102000	6280	3080	2080	1380	5090
4	12400	7540	36400	12800	6720	7650	67500	6020	3100	1980	1190	3480
5	10300	8410	28400	23700	6690	6880	47300	5810	3030	1860	1090	2540
6	8660	8980	22800	35500	6750	6580	46200	5480	3210	2980	1040	2120
7	7660	9200	19500	47100	6620	6670	44200	5210	3830	2790	994	1830
8	6970	8950	18900	51000	6470	8300	34300	4960	3620	3090	979	1600
9	6860	8620	18500	45100	7040	11300	26500	4800	3470	3880	1110	1450
10	6640	8170	21900	40400	12000	13000	21000	4710	3180	3380	1040	1310
11	5920	7680	36500	34900	19800	12100	17600	4560	2940	3100	954	1220
12	5420	7790	41300	32100	21900	11300	15200	4320	3270	2700	920	1170
13	5150	7970	37400	35400	18300	10800	13600	4200	3390	2400	903	1150
14	5120	7750	30300	66900	15600	9960	12100	4100	3210	2130	969	1100
15	5200	7470	24200	87300	15800	9910	10700	4190	3130	2080	1080	1070
16	5690	7130	19800	65000	18900	8990	9590	4060	2970	2020	1060	1040
17	6330	6870	17000	47600	24000	7860	8720	4070	2900	2390	992	1130
18	5820	6720	15000	33400	23600	7760	8090	3970	3030	2710	968	1160
19	6800	6420	13500	25800	20600	7900	7540	3840	3120	2550	1030	1080
20	10000	6170	e12000	22900	18100	8110	7150	3720	2930	2550	1250	1080
21	12100	6090	e10000	e19000	16500	8690	6760	3680	2700	2350	1100	1060
22	11600	6000	e9000	e15000	15400	9810	6450	3540	2430	2010	1040	1050
23	10100	5860	10600	e12000	14300	11400	6810	3500	2210	1730	1030	1030
24	9180	6360	18900	e10000	13200	16000	7900	3500	2120	1540	1020	1000
25	8630	12200	20000	9590	12100	18200	8700	3710	2010	1530	992	999
26	8000	18300	17400	e9900	11300	19900	8320	3590	1910	1490	913	1030
27	7510	18700	e15000	e11000	10400	18800	7680	3550	1790	1530	905	1090
28	7130	21600	e13000	e10000	9400	22300	7180	3420	1720	1560	905	1150
29	6760	33500	e11000	7940	---	65500	6820	3320	1730	1560	939	1220
30	7510	33300	11600	e6700	---	67800	6610	3250	1790	1640	947	1390
31	8360	---	11100	e7300	---	60200	---	3350	---	1700	3440	---
TOTAL	264220	318420	688900	854440	372690	500160	676620	135740	84410	69950	35250	59239
MEAN	8523	10610	22220	27560	13310	16130	22550	4379	2814	2256	1137	1975
MAX	17400	33500	46900	87300	24000	67800	102000	6540	3830	3880	3440	9910
MIN	5120	5860	9000	6700	6470	6580	6450	3250	1720	1490	903	999
CFSM	1.24	1.55	3.25	4.03	1.94	2.36	3.29	0.64	0.41	0.33	0.17	0.29
IN.	1.44	1.73	3.74	4.64	2.02	2.72	3.68	0.74	0.46	0.38	0.19	0.32

## STATISTICS OF MONTHLY MEAN DATA FOR WATER YEARS 1940 - 2005, BY WATER YEAR (WY)

MEAN	5329	9142	11830	11600	12790	21840	22310	14780	8902	4801	3695	4171
MAX	24900	32000	28230	30740	33010	49200	62990	28750	46900	20120	18700	34920
(WY)	1991	1951	1973	1952	1981	1945	1993	1978	1972	1972	1994	2004
MIN	659	762	1727	1752	2914	6169	5822	3353	1807	1032	983	601
(WY)	1964	1965	1961	1981	1940	1969	1946	1941	1999	1965	1966	1964

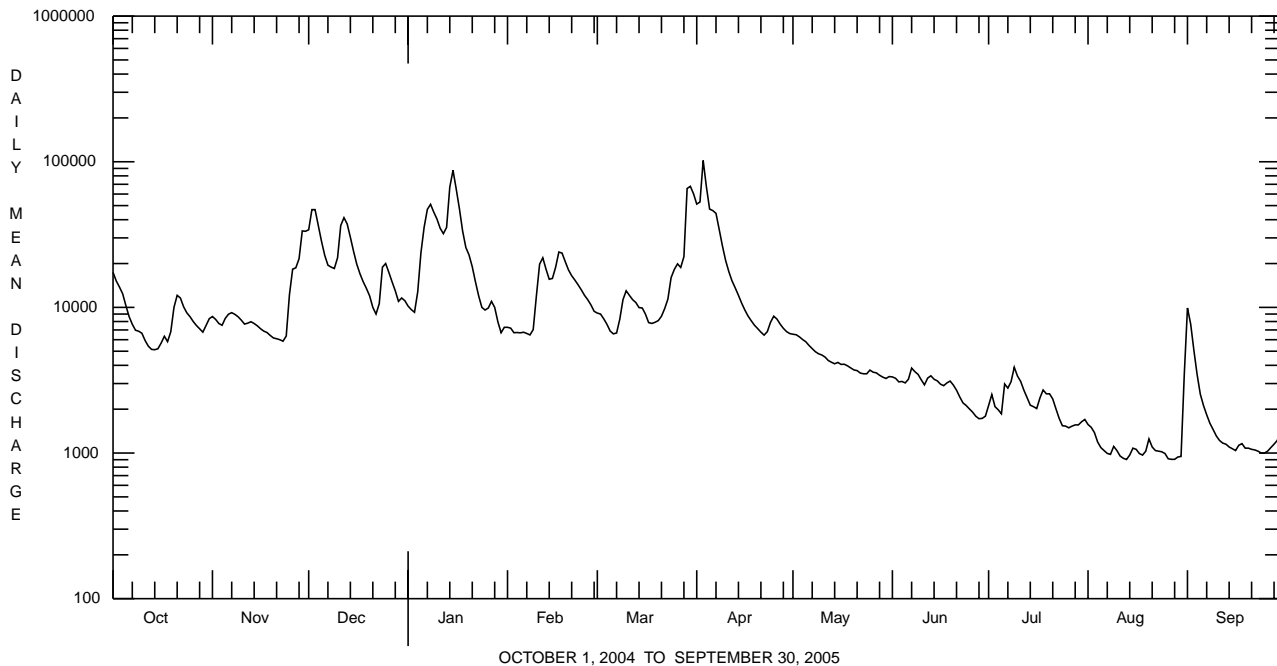
e Estimated.

WEST BRANCH SUSQUEHANNA RIVER BASIN

01553500 WEST BRANCH SUSQUEHANNA RIVER AT LEWISBURG, PA--Continued

SUMMARY STATISTICS	FOR 2004 CALENDAR YEAR		FOR 2005 WATER YEAR		WATER YEARS 1940 - 2005	
ANNUAL TOTAL	6028840		4060039			
ANNUAL MEAN	16470		11120		10920	
HIGHEST ANNUAL MEAN					17760	2004
LOWEST ANNUAL MEAN					6158	1965
HIGHEST DAILY MEAN	190000	Sep 19	102000	Apr 3	285000	Jun 24 1972
LOWEST DAILY MEAN	2830	Jul 4	903	Aug 13	417	Nov 16 1964
ANNUAL SEVEN-DAY MINIMUM	3190	Jun 30	946	Aug 24	511	Sep 15 1964
MAXIMUM PEAK FLOW			a113000	Apr 3	b300000	Jun 24 1972
MAXIMUM PEAK STAGE			19.40	Apr 3	c34.23	Jun 24 1972
INSTANTANEOUS LOW FLOW			892	Aug 13	390	Nov 16 1964
ANNUAL RUNOFF (CFSM)	2.41		1.62		1.59	
ANNUAL RUNOFF (INCHES)	32.75		22.06		21.66	
10 PERCENT EXCEEDS	33500		26100		24800	
50 PERCENT EXCEEDS	11200		6820		6490	
90 PERCENT EXCEEDS	4910		1110		1490	

- a Gage height 18.79 ft, adjusted for backwater from Susquehanna River.
- b About.
- c From floodmarks (backwater from Susquehanna River).



## WEST BRANCH SUSQUEHANNA RIVER BASIN

01553500 WEST BRANCH SUSQUEHANNA RIVER AT LEWISBURG, PA--Continued  
(Pennsylvania Water-Quality Network Station)

## WATER-QUALITY RECORDS

PERIOD OF RECORD.--April 2002 to current year.

REMARKS.--Samples were collected using a D-Frame net with a mesh size of 500 µm. Samples represent counts per 100 animal (approximate) subsamples.

COOPERATION.--Samples were collected as part of the Pennsylvania Department of Environmental Protection Water-Quality Network (WQN) with cooperation from the Pennsylvania Department of Environmental Protection.

BIOLOGICAL DATA  
BENTHIC MACROINVERTEBRATES

Date	10/28/04
Benthic macroinvertebrate	Count
Mollusca	
Gastropoda (SNAILS)	
Basommatophora	
Ancyliidae	
<i>Ferrissia</i>	1
Hydrobiidae	
<i>Amnicola</i>	1
Planorbidae	
<i>Planorbella</i>	1
Pleuroceridae	
<i>Elimia</i>	1
Bivalvia (CLAMS)	
Veneroidea	
Corbiculidae	
<i>Corbicula fluminea</i>	3
Annelida	
Oligochaeta (AQUATIC EARTHWORMS)	
Tubificida	
Naididae	2
Arthropoda	
Insecta	
Ephemeroptera (MAYFLIES)	
Ephemerellidae	
<i>Ephemerella</i>	6
Heptageniidae	
<i>Stenonema</i>	43
Isonychiidae	
<i>Isonychia</i>	15
Tricorythidae	
<i>Tricorythodes</i>	1
Plecoptera (STONEFLIES)	
Taeniopterygidae	
<i>Taenionema</i>	20
<i>Taeniopteryx</i>	4
Trichoptera (CADDISFLIES)	
Hydropsychidae	
<i>Cheumatopsyche</i>	14
<i>Hydropsyche</i>	2
Leptoceridae	
<i>Oecetis</i>	1
Diptera (TRUE FLIES)	
Chironomidae (MIDGES)	
	4
Total Organisms	119
Total Taxa	16