



2005 Water Year JUNIATA RIVER BASIN

01563200 Rays Br Juniata R bl Rays Dam nr Huntingdon, PA

Latitude: 40° 25 ' 44"

Longitude: 077° 59 ' 29"

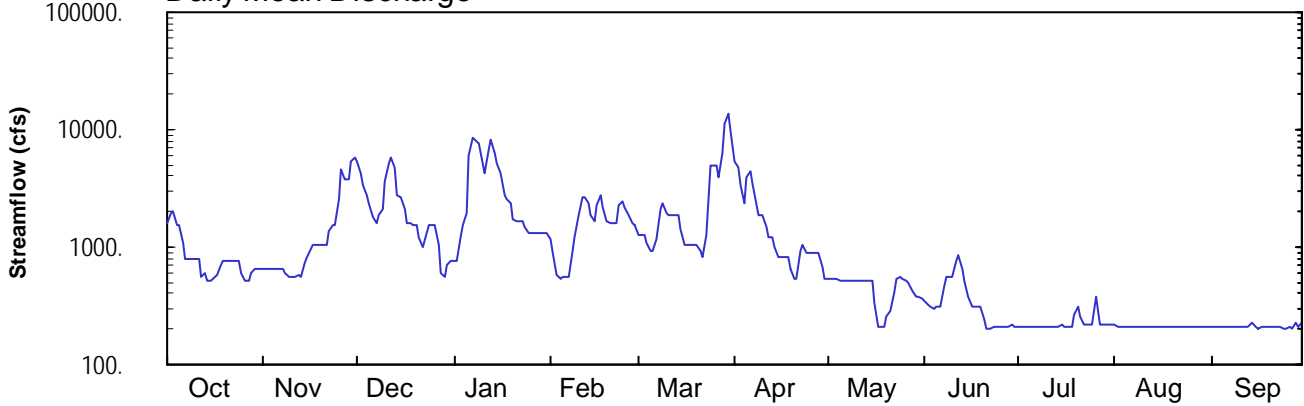
Hydrologic Unit Code: 02050303

Huntingdon County

Datum: 597.36 feet

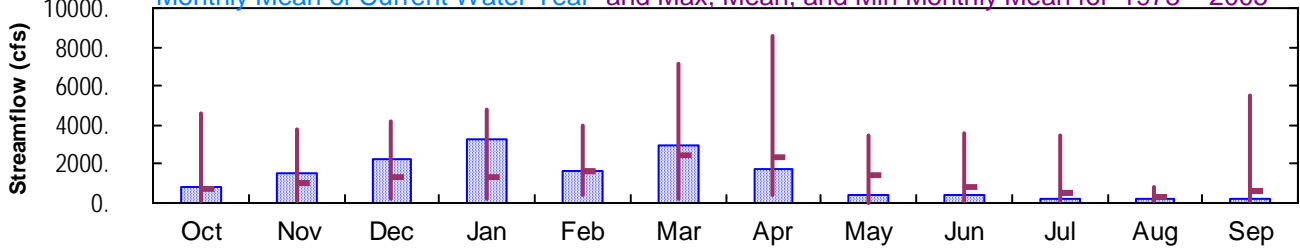
Drainage Area: 960. mi²

Daily Mean Discharge

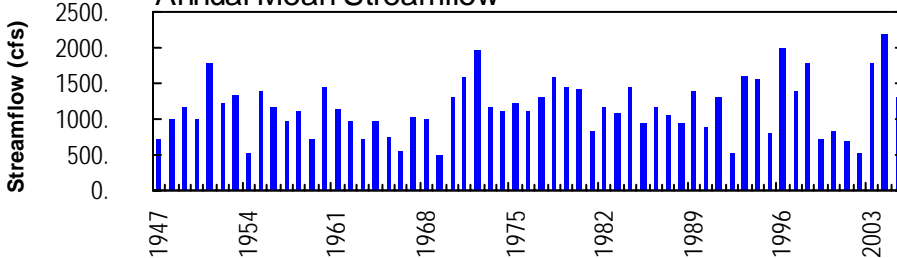


Monthly Statistics

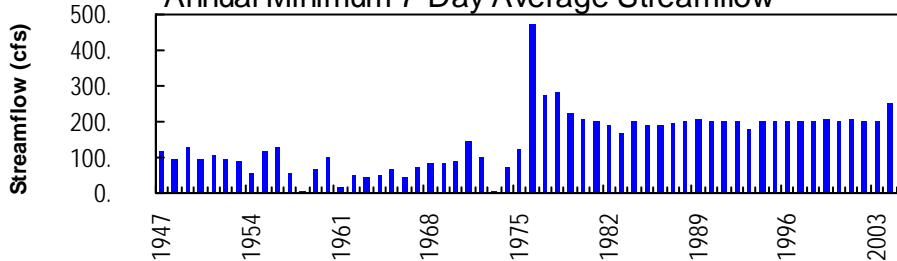
Monthly Mean of Current Water Year and Max, Mean, and Min Monthly Mean for 1973 – 2005



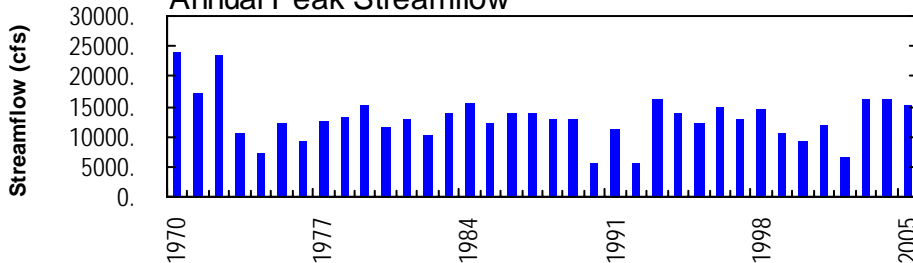
Annual Mean Streamflow



Annual Minimum 7-Day Average Streamflow



Annual Peak Streamflow



JUNIATA RIVER BASIN

01563200 RAYSTOWN BRANCH JUNIATA RIVER BELOW RAYSTOWN DAM NEAR HUNTINGDON, PA

LOCATION.--Lat 40°25'44", long 77°59'29", Huntingdon County, Hydrologic Unit 02050303, on left bank 1.0 mi downstream from Raystown Dam on Township Route 430, 4.0 mi south of Huntingdon, and 4.7 mi upstream from mouth.

DRAINAGE AREA.--960 mi².

PERIOD OF RECORD.--January 1946 to current year. Prior to October 1946 monthly discharge only, published in WSP 1302. Prior to Oct. 1, 1969, published as Raystown Branch Juniata River near Huntingdon.

GAGE.--Water-stage recorder. Datum of gage is 597.36 ft above National Geodetic Vertical Datum of 1929 (U.S. Army Corps of Engineers benchmark). Prior to Oct. 1, 1969, water-stage recorder at site 4.3 mi upstream at datum 22.72 ft higher.

REMARKS.--No estimated daily discharges. Records fair except those for period Jan. to March, which are poor. Flow regulated since October 1972 by Raystown Dam (station 01563100). Several measurements of water temperature were made during the year. Satellite and landline telemetry at station.

EXTREMES OUTSIDE PERIOD OF RECORD.--Flood of Mar. 18, 1936, reached a stage of 31.0 ft, discharge, 87,000 ft³/s, at previous site and datum, by computation of peak discharge at dam.

DISCHARGE, CUBIC FEET PER SECOND, WATER YEAR OCTOBER 2004 TO SEPTEMBER 2005
DAILY MEAN VALUES

DAY	OCT	NOV	DEC	JAN	FEB	MAR	APR	MAY	JUN	JUL	AUG	SEP
1	1590	657	5350	755	1180	1280	5420	540	349	212	221	212
2	1930	656	4190	755	880	1260	4720	541	319	212	212	212
3	1980	657	3420	1210	587	1250	3370	541	306	212	206	212
4	1560	659	2750	1550	543	1080	2400	541	301	212	207	212
5	1560	659	2370	1960	557	942	3870	521	306	212	209	212
6	1090	659	1790	6030	557	924	4430	505	313	212	209	212
7	790	659	1570	8400	557	1170	3480	505	464	212	209	212
8	787	603	1890	8360	928	2120	2310	505	558	214	210	212
9	787	568	2120	7520	1220	2350	1880	505	557	212	213	212
10	787	568	3560	5090	1840	1900	1870	505	557	212	212	212
11	787	568	5170	4160	2640	1890	1480	506	748	212	212	212
12	549	569	5700	6850	2660	1890	1230	507	866	212	212	212
13	610	568	4760	8380	2390	1890	1240	505	647	212	212	210
14	513	718	2720	6270	1850	1880	984	506	505	213	212	229
15	519	819	2690	5070	1650	1440	819	508	377	214	212	209
16	541	953	2070	4240	2290	1050	819	334	310	211	213	205
17	582	1050	1570	2780	2760	1040	823	211	310	213	212	209
18	703	1050	1570	2580	2190	1030	825	209	310	212	212	209
19	755	1050	1560	2400	1660	1030	648	210	308	268	212	208
20	755	1050	1560	1710	1620	1030	530	254	242	308	212	210
21	747	1050	1220	1670	1610	917	528	289	203	258	212	209
22	755	1350	1020	1660	1610	821	943	401	206	218	212	208
23	755	1550	1330	1650	2230	1280	1030	538	207	218	212	213
24	755	1550	1550	1500	2480	4980	904	568	210	218	212	206
25	606	2540	1550	1330	2160	4880	905	529	209	218	212	206
26	516	4670	1550	1310	1890	4880	904	505	209	377	212	207
27	516	3800	1040	1300	1620	3870	904	503	208	220	212	206
28	601	3760	595	1300	1530	6160	904	422	209	221	212	226
29	655	5270	567	1310	---	11400	680	370	215	221	212	210
30	661	5710	693	1310	---	13700	538	370	213	221	212	223
31	659	---	755	1310	---	9990	---	358	---	221	213	---
TOTAL	26401	45990	70250	101720	45689	91324	51388	13812	10742	7008	6562	6347
MEAN	852	1533	2266	3281	1632	2946	1713	446	358	226	212	212
MAX	1980	5710	5700	8400	2760	13700	5420	568	866	377	221	229
MIN	513	568	567	755	543	821	528	209	203	211	206	205

JUNIATA RIVER BASIN

01563200 RAYSTOWN BRANCH JUNIATA RIVER BELOW RAYSTOWN DAM NEAR HUNTINGDON, PA--Continued

STATISTICS OF MONTHLY MEAN DATA FOR WATER YEARS 1973 - 2005, BY WATER YEAR (WY) (SINCE REGULATION)

	OCT	NOV	DEC	JAN	FEB	MAR	APR	MAY	JUN	JUL	AUG	SEP
MEAN	735	1060	1333	1331	1670	2476	2298	1459	847	504	355	614
MAX	4616	3778	4204	4768	3999	7104	8605	3438	3548	3484	802	5526
(WY)	1977	1974	1973	1996	1984	1994	1993	1978	2003	1989	1979	2004
MIN	150	125	215	208	436	212	370	18.6	59.1	133	118	134
(WY)	1975	1975	1981	1981	2002	2002	1974	1973	1973	1973	1973	1973

SUMMARY STATISTICS FOR 2004 CALENDAR YEAR FOR 2005 WATER YEAR WATER YEARS 1973 - 2005

ANNUAL TOTAL	745050	477233	1220
ANNUAL MEAN	2036	1307	2189
HIGHEST ANNUAL MEAN			2004
LOWEST ANNUAL MEAN			1992
HIGHEST DAILY MEAN	15500	Sep 24	13700
LOWEST DAILY MEAN	215	Aug 18	203
ANNUAL SEVEN-DAY MINIMUM	253	Jul 5	207
MAXIMUM PEAK FLOW			15100
MAXIMUM PEAK STAGE			14.61
10 PERCENT EXCEEDS	4800	3390	2870
50 PERCENT EXCEEDS	1100	659	511
90 PERCENT EXCEEDS	290	212	202

STATISTICS OF MONTHLY MEAN DATA FOR WATER YEARS 1947 - 1972, BY WATER YEAR (WY) (PRIOR TO REGULATION)

	OCT	NOV	DEC	JAN	FEB	MAR	APR	MAY	JUN	JUL	AUG	SEP
MEAN	343	651	985	1195	1649	2695	2132	1500	875	442	303	229
MAX	1587	2796	2877	2915	4150	4481	4632	3346	5740	1722	925	648
(WY)	1955	1971	1951	1949	1971	1963	1970	1960	1972	1972	1956	1950
MIN	64.7	65.3	131	220	317	754	683	482	180	80.1	66.0	67.6
(WY)	1964	1958	1966	1954	1954	1969	1968	1969	1965	1966	1966	1963

SUMMARY STATISTICS WATER YEARS 1947 - 1972

ANNUAL MEAN	1080
HIGHEST ANNUAL MEAN	1960
LOWEST ANNUAL MEAN	497
HIGHEST DAILY MEAN	22200
LOWEST DAILY MEAN	5.0
ANNUAL SEVEN-DAY MINIMUM	7.7
MAXIMUM PEAK FLOW	a24500
MAXIMUM PEAK STAGE	b18.54
INSTANTANEOUS LOW FLOW	4.3
ANNUAL RUNOFF (CFSM)	1.13
ANNUAL RUNOFF (INCHES)	15.29
10 PERCENT EXCEEDS	2580
50 PERCENT EXCEEDS	475
90 PERCENT EXCEEDS	114

- a From rating curve extended above 16,000 ft³/s on basis of computation of peak discharge at dam, gage height, 16.74 ft, site and datum then in use.
- b Present site and datum.

