



2005 Water Year
WEST CONEWAGO CREEK BASIN
01573825 West Conewago Creek at East Berlin, PA

Latitude: 39° 56 ' 27"

Longitude: 076° 59 ' 27"

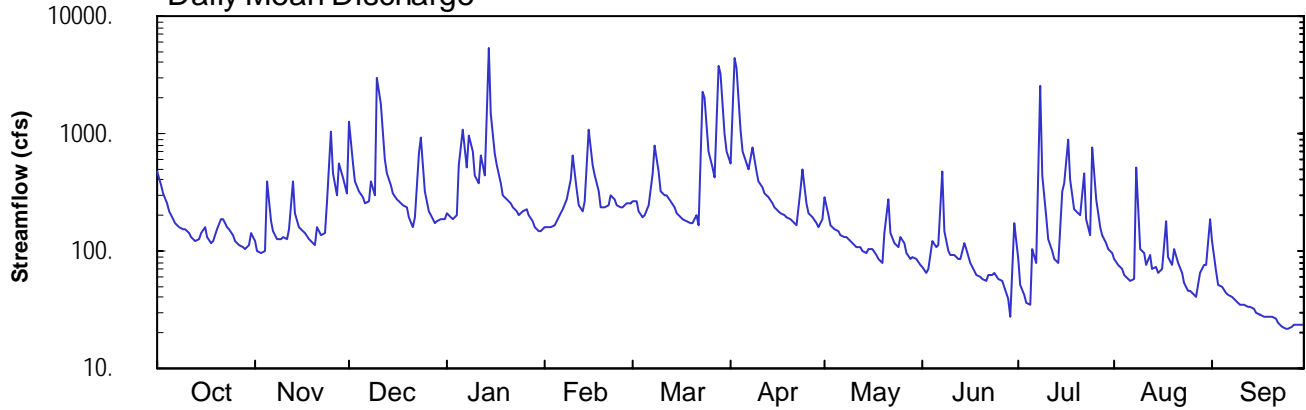
Hydrologic Unit Code: 02050306

Adams County

Datum: 400 feet

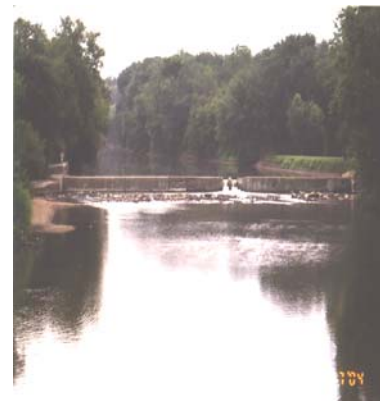
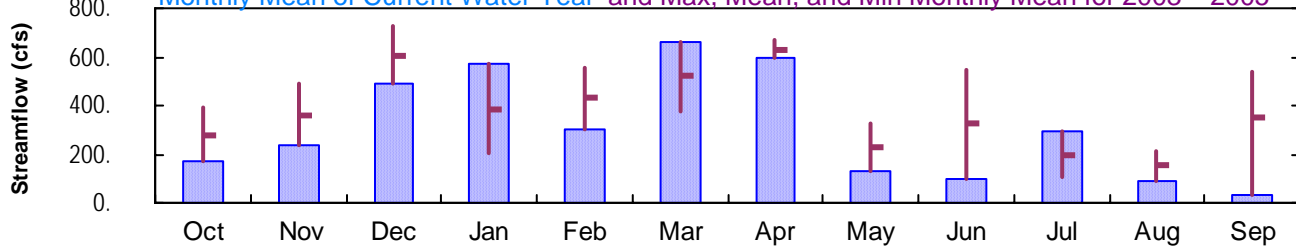
Drainage Area: 218. mi²

Daily Mean Discharge



Monthly Statistics

Monthly Mean of Current Water Year and Max, Mean, and Min Monthly Mean for 2003 – 2005



WEST CONEWAGO CREEK BASIN

01573825 WEST CONEWAGO CREEK AT EAST BERLIN, PA

LOCATION.--Lat 39°56'27", long 76°59'27", Adams County, Hydrologic Unit 02050306, on right bank 100 ft downstream from bridge on State Highway 234, 1.4 mi upstream from confluence with Beaver Creek, at East Berlin.

DRAINAGE AREA.--218 mi².

PERIOD OF RECORD.--September 2003 to current year.

GAGE.--Water-stage recorder, crest-stage gage, and concrete control. Datum of gage is 400 ft above National Geodetic Vertical Datum of 1929, from topographic map.

REMARKS.--Records good except those for estimated daily discharges, which are poor. Satellite telemetry at station.

PEAK DISCHARGES FOR CURRENT YEAR.--Peak discharges greater than a base discharge of 4,500 ft³/s and maximum (*):

Date	Time	Discharge ft ³ /s	Gage Height (ft)	Date	Time	Discharge ft ³ /s	Gage Height (ft)
Dec. 10	2000	5,130	9.78	Mar. 28	2130	8,020	12.74
Jan. 14	1145	*8,810	*13.53	Apr. 2	2000	8,760	13.48
Mar. 23	2015	5,850	10.54	July 8	1215	4,510	9.10

DISCHARGE, CUBIC FEET PER SECOND, WATER YEAR OCTOBER 2004 TO SEPTEMBER 2005
DAILY MEAN VALUES

DAY	OCT	NOV	DEC	JAN	FEB	MAR	APR	MAY	JUN	JUL	AUG	SEP
1	473	120	1270	207	e160	263	567	292	72	85	86	122
2	369	102	567	197	e160	270	4400	200	65	52	77	68
3	316	95	385	185	e160	216	3650	168	70	42	72	52
4	251	101	319	202	e165	191	1070	155	123	36	64	50
5	215	396	285	541	177	205	695	145	109	35	59	45
6	189	180	256	1090	206	250	566	137	113	104	56	42
7	173	146	267	508	230	464	486	133	477	80	58	40
8	160	127	395	948	e280	783	752	130	147	2540	505	39
9	154	128	302	692	e405	468	470	124	101	440	105	37
10	154	133	2930	437	641	326	389	112	94	193	95	35
11	141	128	1770	384	336	304	349	110	94	127	76	34
12	130	152	610	653	245	296	309	106	87	101	92	34
13	120	399	457	439	222	268	288	99	84	85	70	33
14	125	212	366	5340	262	240	260	97	115	81	74	32
15	145	161	306	1470	1100	210	239	103	102	318	65	30
16	158	148	273	675	526	195	218	103	81	372	70	29
17	134	140	263	529	444	186	211	94	74	889	182	28
18	117	127	247	e380	316	179	204	84	64	413	90	28
19	121	122	233	e300	237	172	192	79	61	230	77	28
20	156	114	197	e280	233	175	185	141	58	216	104	27
21	189	157	162	e260	250	204	174	280	55	205	78	26
22	190	139	192	e240	294	168	165	144	62	458	64	25
23	162	140	674	e220	281	2230	341	116	64	184	53	23
24	153	260	928	e200	244	2010	487	107	66	137	46	22
25	137	1060	e320	e220	240	697	258	134	57	766	46	22
26	120	452	e220	e225	237	509	207	117	56	277	43	23
27	111	295	e200	e200	255	432	191	97	50	160	40	23
28	107	563	e175	e180	255	3700	172	85	40	134	65	24
29	103	428	e180	e160	---	3200	158	89	27	115	77	24
30	113	309	e185	e150	---	1010	186	85	172	105	75	24
31	144	---	190	e150	---	692	---	77	---	96	188	---
TOTAL	5330	7034	15124	17662	8561	20513	17839	3943	2840	9076	2852	1069
MEAN	172	234	488	570	306	662	595	127	94.7	293	92.0	35.6
MAX	473	1060	2930	5340	1100	3700	4400	292	477	2540	505	122
MIN	103	95	162	150	160	168	158	77	27	35	40	22
CFSM	0.79	1.08	2.24	2.61	1.40	3.04	2.73	0.58	0.43	1.34	0.42	0.16
IN.	0.91	1.20	2.58	3.01	1.46	3.50	3.04	0.67	0.48	1.55	0.49	0.18

STATISTICS OF MONTHLY MEAN DATA FOR WATER YEARS 2003 - 2005, BY WATER YEAR (WY)

	2003	2004	2005	2004	2005	2004	2005	2005	2005	2004	2005	2005
MEAN	280	362	605	387	434	519	630	225	323	199	152	349
MAX	388	489	723	570	557	662	666	323	550	293	212	538
(WY)	2004	2004	2004	2005	2004	2005	2004	2004	2004	2005	2004	2004
MIN	172	234	488	204	306	376	595	127	94.7	106	92.0	35.6
(WY)	2005	2005	2005	2004	2005	2004	2005	2005	2005	2004	2005	2005

e Estimated.

WEST CONEWAGO CREEK BASIN

01573825 WEST CONEWAGO CREEK AT EAST BERLIN, PA--Continued

SUMMARY STATISTICS	FOR 2004 CALENDAR YEAR		FOR 2005 WATER YEAR		WATER YEARS 2003 - 2005	
ANNUAL TOTAL	134092		111843			
ANNUAL MEAN	366		306		366	
HIGHEST ANNUAL MEAN					425	2004
LOWEST ANNUAL MEAN					306	2005
HIGHEST DAILY MEAN	5160	Sep 29	5340	Jan 14	7580	Dec 11 2003
LOWEST DAILY MEAN	45	Sep 7	22	Sep 24, 25	22	Sep 24 2005
ANNUAL SEVEN-DAY MINIMUM	50	Sep 3	23	Sep 23	23	Sep 23 2005
MAXIMUM PEAK FLOW			a8810	Jan 14	a10400	Dec 11 2003
MAXIMUM PEAK STAGE			13.53	Jan 14	15.04	Dec 11 2003
INSTANTANEOUS LOW FLOW			21	Jun 28b	21	Jun 28 2005b
ANNUAL RUNOFF (CFSM)	1.68		1.41		1.68	
ANNUAL RUNOFF (INCHES)	22.88		19.09		22.81	
10 PERCENT EXCEEDS	677		550		691	
50 PERCENT EXCEEDS	208		168		205	
90 PERCENT EXCEEDS	82		50		65	

a From rating curve extended above 8,150 ft³/s on basis of straight-line extension.

b Also Sept. 24, 25, 2005.

