



2005 Water Year
SUSQUEHANNA RIVER BASIN
01576000 Susquehanna River at Marietta, PA

Latitude: 40° 03 ' 16"

Longitude: 076° 31 ' 52"

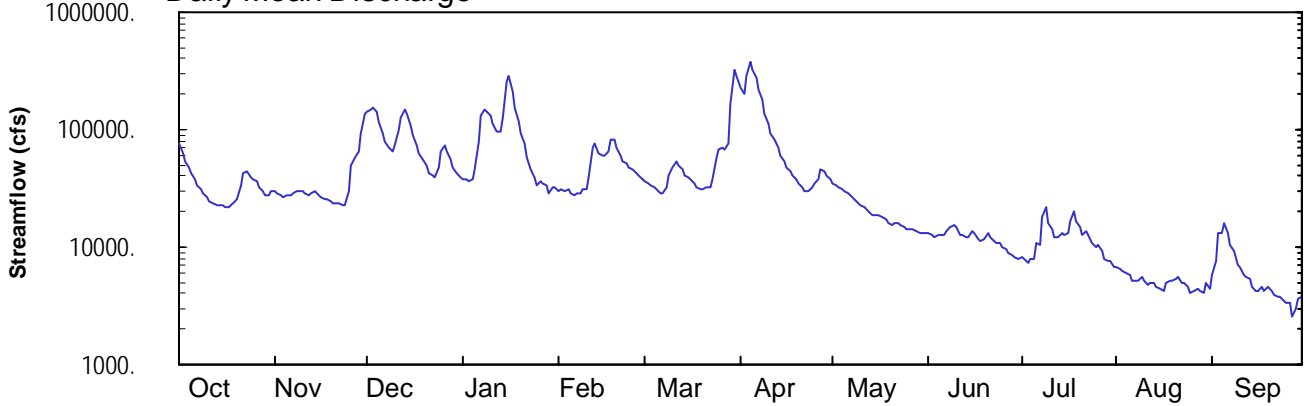
Hydrologic Unit Code: 02050306

Lancaster County

Datum: 200.56 feet

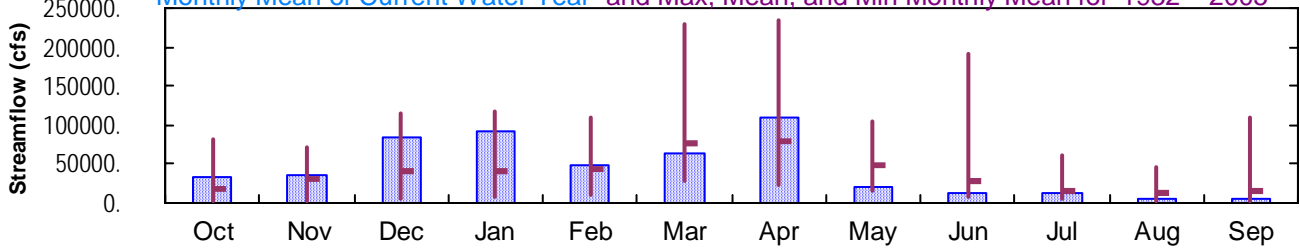
Drainage Area: 25990 mi²

Daily Mean Discharge

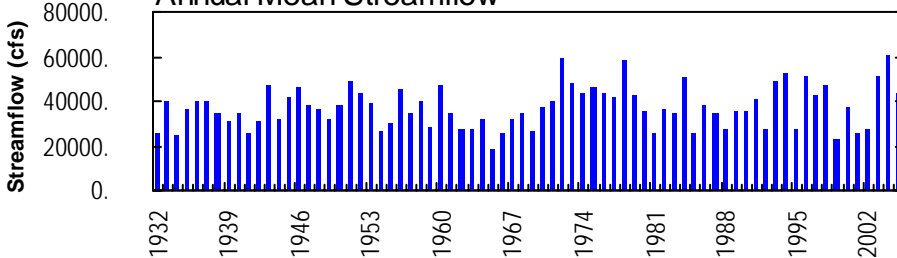


Monthly Statistics

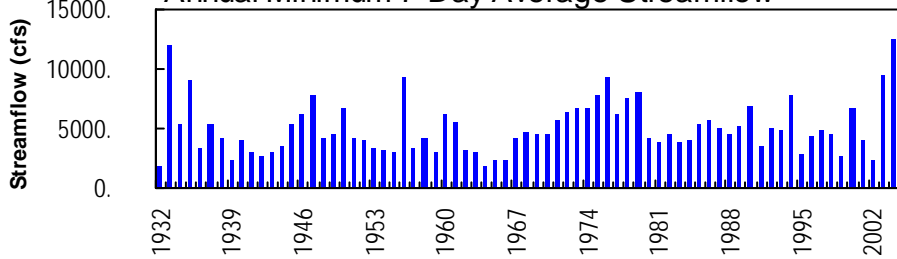
Monthly Mean of Current Water Year and Max, Mean, and Min Monthly Mean for 1932 – 2005



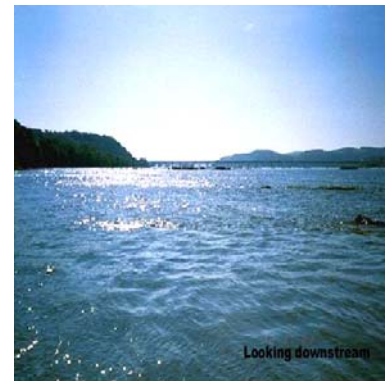
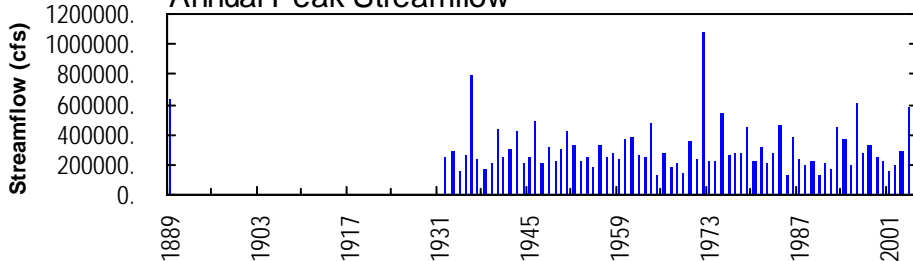
Annual Mean Streamflow



Annual Minimum 7-Day Average Streamflow



Annual Peak Streamflow



01576000-Susquehanna River at Marietta

SUSQUEHANNA RIVER BASIN

01576000 SUSQUEHANNA RIVER AT MARIETTA, PA

LOCATION.--Lat 40°03'16", long 76°31'52", Lancaster County, Hydrologic Unit 02050306, on left bank 420 ft upstream from Chickies Creek, and 1.0 mi downstream from Marietta. Records include flow of Chickies Creek.

DRAINAGE AREA.--25,990 mi², approximately, includes that of Chickies Creek.

PERIOD OF RECORD.--October 1931 to current year.

REVISED RECORDS.--WSP 781: 1933(M). WSP 1502: 1937.

GAGE.--Water-stage recorder. Datum of gage is 200.56 ft above National Geodetic Vertical Datum of 1929.

REMARKS.--Records good except those for period Jan. 19 to Feb. 19, which are fair. Flow slightly regulated by 16 flood-control reservoirs which have a combined capacity of 1,599,000 acre-ft. Some diurnal fluctuation below 8,000 ft³/s caused by hydroelectric plant 9.7 mi upstream. Several measurements of water temperature were made during the year. Satellite telemetry at station.

EXTREMES OUTSIDE PERIOD OF RECORD.--Flood of June 2, 1889, reached a stage of 58.2 ft, from floodmark, discharge, about 630,000 ft³/s.

DISCHARGE, CUBIC FEET PER SECOND, WATER YEAR OCTOBER 2004 TO SEPTEMBER 2005
DAILY MEAN VALUES

DAY	OCT	NOV	DEC	JAN	FEB	MAR	APR	MAY	JUN	JUL	AUG	SEP
1	77000	29600	142000	38200	e30000	36200	225000	35000	13100	8280	6710	5880
2	61600	28700	150000	37200	e31000	34600	200000	33000	12800	8060	6480	7520
3	53000	27700	154000	36800	e30000	33400	290000	31700	12300	7380	6350	13300
4	46800	26900	143000	37000	e31000	32100	380000	30700	12600	7870	6070	13200
5	41800	27300	116000	45000	e29000	30500	328000	29800	12500	7990	5680	15800
6	37300	27600	94200	79500	e28000	28800	272000	28200	12400	10800	5150	12900
7	33900	28400	77700	132000	e29000	28600	220000	27000	13500	10500	5160	10500
8	31000	29900	69000	147000	e29000	31800	177000	25300	14500	18300	5160	9240
9	28200	30400	65700	145000	e30500	41100	137000	23700	15500	21500	5610	6990
10	26400	29700	74000	130000	e31000	47900	111000	22600	14900	16100	5240	6770
11	25000	28400	102000	112000	e38500	52900	93400	21600	12900	14400	4860	5790
12	23900	27400	127000	98100	e71000	49300	80900	20700	12600	12100	4970	5470
13	22500	28300	149000	95700	e76000	45100	70100	19300	12100	12400	4860	5440
14	22900	29300	137000	126000	e63500	41500	61100	18500	12200	13000	4620	4590
15	22300	28400	109000	252000	e61000	38800	54100	18500	13600	12500	4380	4230
16	21900	27000	88400	283000	e60000	37100	48500	18600	13300	13200	4240	4240
17	21900	25900	74000	213000	e66000	35000	43800	17800	11700	16800	5040	4550
18	22900	25100	63000	155000	e81000	32400	40400	17000	11200	19900	5080	4270
19	24200	24400	55300	116000	e82000	31300	37100	16300	11700	16500	5240	4580
20	25200	23800	48900	92600	70100	31200	34400	15600	12900	15000	5340	4320
21	33700	23900	43200	77600	60700	31800	32300	15900	12200	12700	5660	3920
22	42400	23500	40300	e59000	54500	32800	30100	15900	11300	13600	4860	3700
23	43600	23100	38600	e46000	50900	38100	29700	15300	11000	12500	5040	3800
24	39600	22700	48000	e39000	48300	58200	32800	14600	10800	10900	4550	3550
25	37700	29600	64200	e34000	46500	68900	35100	14100	9970	10200	4020	3330
26	35600	49500	72700	e36500	43100	71500	37400	14000	9590	10200	4250	3410
27	32700	58700	66200	e35500	40100	68900	45300	13900	8720	9140	4330	2570
28	30000	65500	56300	e33000	37800	77200	44900	13600	8520	7950	4210	2930
29	28000	91600	48500	e28500	---	165000	40400	13300	8160	7700	4090	3570
30	28000	136000	43100	e32000	---	323000	37000	13000	7780	7520	4890	3710
31	29600	---	39700	e32500	---	292000	---	13000	---	6860	4430	---
TOTAL	1050600	1078300	2600000	2824700	1349500	1967000	3268800	627500	356340	371850	156570	184070
MEAN	33890	35940	83870	91120	48200	63450	109000	20240	11880	12000	5051	6136
MAX	77000	136000	154000	283000	82000	323000	380000	35000	15500	21500	6710	15800
MIN	21900	22700	38600	28500	28000	28600	29700	13000	7780	6860	4020	2570
CFSM	1.30	1.38	3.23	3.51	1.85	2.44	4.19	0.78	0.46	0.46	0.19	0.24
IN.	1.50	1.54	3.72	4.04	1.93	2.82	4.68	0.90	0.51	0.53	0.22	0.26

STATISTICS OF MONTHLY MEAN DATA FOR WATER YEARS 1932 - 2005, BY WATER YEAR (WY)

MEAN	18220	29940	40610	40890	44560	76120	79590	48530	28920	16030	12610	14260
MAX	81330	71930	114300	116900	109300	229100	235100	103400	190700	61480	47180	110900
(WY)	1977	1978	1997	1996	1984	1936	1993	1989	1972	1972	1994	2004
MIN	2699	3041	6216	6635	10730	28120	22450	14240	6974	3957	3627	2296
(WY)	1964	1965	1999	1981	1934	1960	1946	1941	1999	1965	1966	1964

e Estimated.

SUSQUEHANNA RIVER BASIN

01576000 SUSQUEHANNA RIVER AT MARIETTA, PA--Continued

SUMMARY STATISTICS	FOR 2004 CALENDAR YEAR		FOR 2005 WATER YEAR		WATER YEARS 1932 - 2005	
ANNUAL TOTAL	20504500		15835230			
ANNUAL MEAN	56020		43380		37460	
HIGHEST ANNUAL MEAN					60430	
LOWEST ANNUAL MEAN					19060	
HIGHEST DAILY MEAN	e497000 Sep 20		380000 Apr 4		1040000 Jun 24 1972	
LOWEST DAILY MEAN	11800 Jul 6,7		2570 Sep 27		1380 Sep 26 1932	
ANNUAL SEVEN-DAY MINIMUM	12500 Jul 4		3300 Sep 24		1720 Sep 26 1932	
MAXIMUM PEAK FLOW			391000 Apr 4		a1080000 Jun 23 1972	
MAXIMUM PEAK STAGE			51.71 Apr 4		b64.54 Jun 23 1972	
INSTANTANEOUS LOW FLOW			2430 Sep 27,28		618 Sep 26 1932	
ANNUAL RUNOFF (CFSM)	2.16		1.67		1.44	
ANNUAL RUNOFF (INCHES)	29.35		22.67		19.58	
10 PERCENT EXCEEDS	110000		96700		84800	
50 PERCENT EXCEEDS	41700		28600		22600	
90 PERCENT EXCEEDS	22000		5160		6010	

- a From rating curve extended above 961,000 ft³/s.
- b From floodmarks.
- e Estimated.

