

## LACKAWANNA RIVER BASIN

## 01534500 LACKAWANNA RIVER AT ARCHBALD, PA

**LOCATION.**--Lat 41°30'16", long 75°32'33", Lackawanna County, Hydrologic Unit 02050107, on right bank along SR 1012 in Archbald, and 0.5 mi upstream from White Oak Run and Gilmartin Street bridge.

**DRAINAGE AREA.**--108 mi<sup>2</sup>.

**PERIOD OF RECORD.**--October 1939 to current year. Prior to February 1940 monthly discharge only, published in WSP 1302.

**GAGE.**--Water-stage recorder. Datum of gage is 889.33 ft above sea level.

**REMARKS.**--Records fair except those for estimated daily discharge, which is poor. Regulation at low flow by mine pumps upstream from station. Flow regulated since December 1959 by Stillwater Dam (station 01534180) about 17 mi upstream. Several measurements of water temperature were made during the year. Satellite and landline telemetry at station.

DISCHARGE, CUBIC FEET PER SECOND, WATER YEAR OCTOBER 1998 TO SEPTEMBER 1999  
DAILY MEAN VALUES

DAY	OCT	NOV	DEC	JAN	FEB	MAR	APR	MAY	JUN	JUL	AUG	SEP
1	30	31	40	35	214	186	356	143	117	57	32	29
2	30	31	38	35	362	174	342	131	108	54	32	28
3	30	30	37	40	461	165	320	121	102	50	32	27
4	29	30	35	42	444	496	302	118	96	47	32	27
5	29	29	36	40	389	450	278	124	86	45	32	27
6	28	29	35	38	328	399	247	115	79	42	31	31
7	28	29	35	38	279	293	222	109	87	41	31	32
8	80	29	35	36	252	220	201	200	82	40	31	29
9	74	29	37	46	222	193	238	274	71	40	32	28
10	76	29	37	52	211	182	289	237	66	44	30	28
11	86	33	38	70	200	163	251	215	63	41	30	28
12	70	33	37	73	241	150	294	179	59	41	29	27
13	55	32	37	74	320	137	302	160	56	40	29	27
14	55	32	36	64	272	132	278	154	60	39	41	27
15	49	32	35	61	250	132	242	133	65	38	32	30
16	47	31	35	61	239	124	231	121	56	37	31	369
17	44	31	35	63	236	145	240	111	60	36	30	496
18	40	31	35	143	235	210	240	103	74	48	29	403
19	38	30	35	329	225	215	225	168	65	48	29	260
20	36	31	35	314	207	199	216	160	58	39	29	161
21	35	32	36	304	185	196	206	126	54	37	44	157
22	34	31	54	334	154	392	192	156	51	37	33	296
23	33	31	84	444	141	329	215	170	48	36	31	292
24	32	31	82	1390	140	331	278	221	46	35	30	245
25	32	31	63	1120	132	364	244	272	44	34	30	195
26	31	41	52	1050	127	349	220	242	44	34	32	154
27	e31	45	49	783	119	335	198	217	42	33	31	120
28	32	45	51	577	130	366	182	188	43	33	31	100
29	32	45	48	432	---	399	167	168	57	33	31	86
30	31	42	45	321	---	414	154	148	56	32	30	146
31	30	---	34	249	---	386	---	131	---	32	29	---
TOTAL	1307	986	1321	8658	6715	8226	7370	5115	1995	1243	976	3905
MEAN	42.2	32.9	42.6	279	240	265	246	165	66.5	40.1	31.5	130
MAX	86	45	84	1390	461	496	356	274	117	57	44	496
MIN	28	29	34	35	119	124	154	103	42	32	29	27

e Estimated.

LACKAWANNA RIVER BASIN

01534500 LACKAWANNA RIVER AT ARCHBALD, PA--Continued

STATISTICS OF MONTHLY MEAN DATA FOR WATER YEARS 1960 - 1999, BY WATER YEAR (WY) (SINCE REGULATION)

	OCT	NOV	DEC	JAN	FEB	MAR	APR	MAY	JUN	JUL	AUG	SEP
MEAN	123	195	226	196	216	364	425	260	162	91.1	67.9	82.0
MAX	578	661	581	541	598	741	1111	610	605	278	234	377
(WY)	1978	1973	1974	1996	1981	1977	1993	1989	1972	1984	1994	1987
MIN	15.8	17.4	42.6	38.2	40.4	143	174	101	47.9	25.6	25.0	18.4
(WY)	1965	1965	1999	1981	1980	1981	1988	1982	1962	1965	1966	1964

SUMMARY STATISTICS

FOR 1998 CALENDAR YEAR

FOR 1999 WATER YEAR

WATER YEARS 1960 - 1999

ANNUAL TOTAL		76678		47817								
ANNUAL MEAN		210		131					200			
HIGHEST ANNUAL MEAN									313			1973
LOWEST ANNUAL MEAN									101			1965
HIGHEST DAILY MEAN			1150	Jan 8		1390	Jan 24		3250		Mar 15	1986
LOWEST DAILY MEAN			27	Sep 18-20		27	Sep 3a		13		Nov 1	1964
ANNUAL SEVEN-DAY MINIMUM			28	Sep 14		28	Sep 8		14		Oct 26	1964
INSTANTANEOUS PEAK FLOW						2030	Jan 24		b7190		Jan 19	1996
INSTANTANEOUS PEAK STAGE						5.46	Jan 24		9.32		Jan 19	1996
10 PERCENT EXCEEDS			548			308			455			
50 PERCENT EXCEEDS			109			57			120			
90 PERCENT EXCEEDS			31			30			34			

STATISTICS OF MONTHLY MEAN DATA FOR WATER YEARS 1940 - 1959, BY WATER YEAR (WY) (PRIOR TO REGULATION)

	OCT	NOV	DEC	JAN	FEB	MAR	APR	MAY	JUN	JUL	AUG	SEP
MEAN	113	209	222	203	181	377	455	279	145	112	92.3	78.9
MAX	657	430	420	380	371	691	1113	553	284	373	443	187
(WY)	1956	1946	1951	1949	1951	1945	1940	1947	1946	1947	1955	1945
MIN	27.2	50.1	53.3	56.8	65.2	188	121	85.6	63.4	38.4	31.8	28.8
(WY)	1942	1942	1947	1948	1940	1941	1946	1941	1955	1955	1953	1953

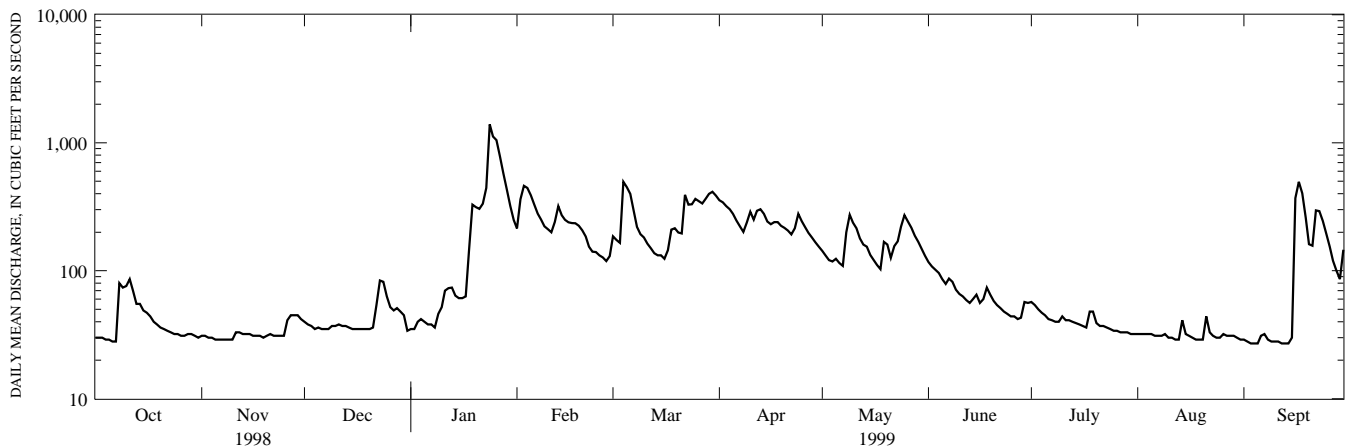
SUMMARY STATISTICS

WATER YEARS 1940 - 1959

ANNUAL MEAN	203											
HIGHEST ANNUAL MEAN	266					1956						
LOWEST ANNUAL MEAN	153					1957						
HIGHEST DAILY MEAN	4840			May 23	1942							
LOWEST DAILY MEAN	17			Oct 12	1941							
ANNUAL SEVEN-DAY MINIMUM	20			Oct 18	1953							
INSTANTANEOUS PEAK FLOW	b9510			May 22	1942							
INSTANTANEOUS PEAK STAGE	10.58			May 22	1942							
INSTANTANEOUS LOW FLOW	3.0			Oct 9,11	1943							
ANNUAL RUNOFF (CFSM)	1.88											
ANNUAL RUNOFF (INCHES)	25.54											
10 PERCENT EXCEEDS	439											
50 PERCENT EXCEEDS	123											
90 PERCENT EXCEEDS	42											

a Also Sept. 4-5, 12-14.

b From rating curve extended above 1,900 ft<sup>3</sup>/s on basis of slope-area measurement of peak flow.



1-YEAR HYDROGRAPH  
OCTOBER 1, 1998 TO SEPTEMBER 30, 1999