

LACKAWANNA RIVER BASIN

01536000 LACKAWANNA RIVER AT OLD FORGE, PA

LOCATION.--Lat 41°21'33", long 75°44'41", Lackawanna County, Hydrologic Unit 02050107, on right bank 100 ft downstream from bridge on SR 3017, 150 ft upstream from Delaware, Lackawanna, and Western Railroad bridge in Old Forge, and 0.5 mi upstream from St. Johns Creek.

DRAINAGE AREA.--332 mi².

PERIOD OF RECORD.--October 1938 to current year.

REVISED RECORDS.--WSP 1432: 1939(M), 1940, 1945. WDR PA-90-2: 1985(M).

GAGE.--Water-stage recorder. Datum of gage is 595.26 ft above sea level. Prior to Oct. 1, 1974, water-stage recorder at same site and datum. Oct. 1, 1974, to Aug. 17, 1975, nonrecording gage at site 150 ft upstream at different datum.

REMARKS.--Records fair except those for estimated daily discharges, which are poor. Flow regulated since December 1959 by Stillwater Dam (station 01534180) about 33 mi upstream. Several measurements of water temperature were made during the year. Satellite and landline telemetry at station.

DISCHARGE, CUBIC FEET PER SECOND, WATER YEAR OCTOBER 1998 TO SEPTEMBER 1999
DAILY MEAN VALUES

DAY	OCT	NOV	DEC	JAN	FEB	MAR	APR	MAY	JUN	JUL	AUG	SEP
1	47	46	74	57	546	484	747	339	185	106	42	28
2	42	47	70	e45	872	451	749	307	173	145	33	26
3	40	47	67	130	1030	387	694	281	164	123	32	25
4	47	47	64	104	931	1220	648	262	154	84	31	24
5	41	44	83	e84	818	1110	604	279	139	73	35	23
6	39	44	69	e74	697	993	546	259	127	70	33	33
7	36	42	66	e70	620	820	491	242	213	64	33	300
8	298	46	67	70	590	606	441	519	182	60	40	70
9	214	47	68	272	514	550	536	599	126	61	44	39
10	307	52	67	e160	482	510	726	490	113	92	36	32
11	157	75	67	e140	446	445	603	425	107	65	36	31
12	136	63	65	e140	525	403	687	362	100	61	32	30
13	115	55	62	160	799	352	680	303	97	60	34	32
14	139	52	63	142	621	337	598	278	114	57	154	e34
15	96	50	61	e150	536	379	542	244	145	54	77	68
16	86	52	59	e150	529	324	523	219	99	52	43	2280
17	80	68	62	158	543	347	560	201	138	48	37	2370
18	73	62	60	723	543	529	538	188	163	69	34	964
19	68	60	61	1080	524	548	498	440	116	97	32	608
20	63	56	59	705	471	476	522	468	93	78	45	381
21	60	54	59	598	415	472	534	314	86	58	120	425
22	59	45	124	641	321	1180	470	274	80	55	61	916
23	55	46	122	928	285	1000	548	330	73	53	43	783
24	54	47	132	2820	292	984	782	467	57	54	37	559
25	51	46	108	2420	266	1050	643	621	69	44	32	415
26	52	93	e90	1620	257	973	571	486	73	40	57	313
27	50	90	e88	1330	239	894	513	421	65	38	46	247
28	62	75	94	1190	264	891	461	351	77	36	35	210
29	81	77	90	1030	---	900	410	290	264	34	32	183
30	55	78	86	806	---	870	378	243	149	32	31	519
31	48	---	54	642	---	797	---	206	---	31	29	---
TOTAL	2751	1706	2361	18639	14976	21282	17243	10708	3741	1994	1406	11968
MEAN	88.7	56.9	76.2	601	535	687	575	345	125	64.3	45.4	399
MAX	307	93	132	2820	1030	1220	782	621	264	145	154	2370
MIN	36	42	54	45	239	324	378	188	57	31	29	23

e Estimated.

LACKAWANNA RIVER BASIN

01536000 LACKAWANNA RIVER AT OLD FORGE, PA--Continued

STATISTICS OF MONTHLY MEAN DATA FOR WATER YEARS 1960 - 1999, BY WATER YEAR (WY) (SINCE REGULATION)

	OCT	NOV	DEC	JAN	FEB	MAR	APR	MAY	JUN	JUL	AUG	SEP
MEAN	262	408	488	445	502	818	941	607	351	190	142	180
MAX (WY)	1276	1223	1414	1521	1198	1767	2712	1658	1488	566	432	978
MIN (WY)	1978	1973	1997	1996	1981	1977	1993	1989	1972	1984	1994	1987
MIN (WY)	37.3	45.2	76.2	61.4	88.7	291	353	199	69.8	46.4	45.4	37.8
(WY)	1965	1965	1999	1981	1980	1981	1985	1962	1962	1965	1999	1964

SUMMARY STATISTICS	FOR 1998 CALENDAR YEAR	FOR 1999 WATER YEAR	WATER YEARS 1960 - 1999
ANNUAL TOTAL	171580	108775	
ANNUAL MEAN	470	298	444
HIGHEST ANNUAL MEAN			712
LOWEST ANNUAL MEAN			194
HIGHEST DAILY MEAN	e3200	Jan 8	2820
LOWEST DAILY MEAN	35	Sep 20	23
ANNUAL SEVEN-DAY MINIMUM	42	Oct 1	27
INSTANTANEOUS PEAK FLOW			7020
INSTANTANEOUS PEAK STAGE			8.17
10 PERCENT EXCEEDS	1140		734
50 PERCENT EXCEEDS	242		126
90 PERCENT EXCEEDS	52		39

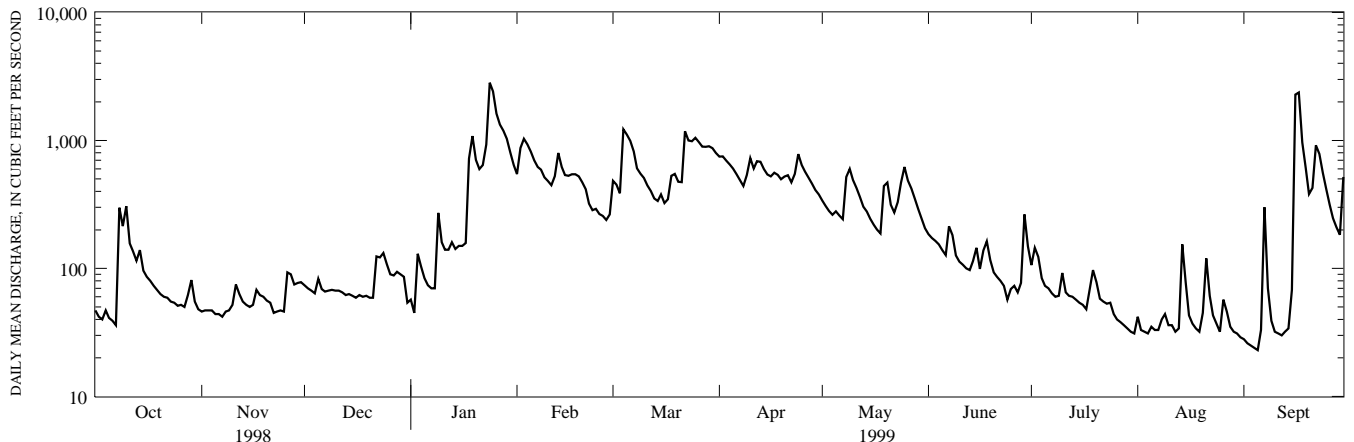
STATISTICS OF MONTHLY MEAN DATA FOR WATER YEARS 1939 - 1959, BY WATER YEAR (WY) (PRIOR TO REGULATION)

	OCT	NOV	DEC	JAN	FEB	MAR	APR	MAY	JUN	JUL	AUG	SEP
MEAN	305	503	600	512	531	986	1195	814	454	360	303	229
MAX (WY)	1618	1199	1260	1047	1263	1652	2614	1750	866	1375	1448	778
MIN (WY)	1956	1956	1939	1949	1939	1945	1958	1947	1946	1947	1955	1945
MIN (WY)	106	122	169	166	160	526	368	262	188	125	130	116
(WY)	1942	1942	1942	1944	1940	1941	1946	1941	1955	1955	1954	1943

SUMMARY STATISTICS WATER YEARS 1939 - 1959

ANNUAL MEAN	566
HIGHEST ANNUAL MEAN	781
LOWEST ANNUAL MEAN	401
HIGHEST DAILY MEAN	14000
LOWEST DAILY MEAN	73
ANNUAL SEVEN-DAY MINIMUM	87
INSTANTANEOUS PEAK FLOW	a31000
INSTANTANEOUS PEAK STAGE	b20.05
INSTANTANEOUS LOW FLOW	54
ANNUAL RUNOFF (CFSM)	1.70
ANNUAL RUNOFF (INCHES)	23.16
10 PERCENT EXCEEDS	1200
50 PERCENT EXCEEDS	340
90 PERCENT EXCEEDS	138

- a From rating curve extended above 3,800 ft³/s on basis of slope-area measurements at gage heights 15.30 ft, 16.49 ft, and at peak flow.
- b From floodmark.
- e Estimated.



1-YEAR HYDROGRAPH
OCTOBER 1, 1998 TO SEPTEMBER 30, 1999