

WEST BRANCH SUSQUEHANNA RIVER BASIN

01545000 KETTLE CREEK NEAR WESTPORT, PA

LOCATION.--Lat 41°19'10", long 77°52'27", Clinton County, Hydrologic Unit 02050203, on left bank on SR 4001, 0.4 mi upstream from Short Bond Run, 3.5 mi upstream from mouth and Westport, and 5.0 mi downstream from Alvin R. Bush Dam (Kettle Creek Lake).

DRAINAGE AREA.--233 mi².

PERIOD OF RECORD.--October 1954 to current year.

GAGE.--Water-stage recorder. Datum of gage is 728.24 ft above sea level. Prior to Oct. 14, 1956, nonrecording gage at same site and datum.

REMARKS.--Records good except those for estimated daily discharges, which are poor. Flow regulated since February 1962 by Alvin R. Bush Dam (station 01544800). Several measurements of water temperature were made during the year. Satellite telemetry at station.

DISCHARGE, CUBIC FEET PER SECOND, WATER YEAR OCTOBER 1998 TO SEPTEMBER 1999
DAILY MEAN VALUES

DAY	OCT	NOV	DEC	JAN	FEB	MAR	APR	MAY	JUN	JUL	AUG	SEP
1	17	12	17	e60	432	230	1560	291	63	62	12	11
2	16	11	17	e80	499	229	1740	261	63	51	12	11
3	13	11	17	e70	568	240	1790	248	64	43	12	11
4	13	10	17	e50	621	1630	1590	218	64	46	12	11
5	13	9.8	17	e70	647	1480	1210	203	62	36	12	11
6	13	9.6	17	e80	611	1170	928	197	57	29	12	11
7	17	12	17	e70	577	891	740	183	49	32	12	11
8	33	16	16	e66	493	636	613	181	40	30	13	10
9	175	16	16	e80	412	547	624	185	38	32	12	9.9
10	123	16	17	e84	391	465	862	173	38	27	12	9.9
11	73	17	16	e68	346	412	964	150	38	39	12	9.9
12	e44	17	16	e60	397	340	914	141	38	40	12	9.9
13	e52	16	16	e80	470	294	826	142	38	34	11	9.9
14	68	17	17	e90	550	302	709	131	38	23	13	9.9
15	103	17	17	e120	512	282	597	119	38	21	12	9.9
16	95	17	17	316	448	277	527	125	38	21	12	12
17	57	17	17	282	437	288	501	116	e40	17	11	11
18	75	16	16	338	437	552	444	111	e38	16	11	14
19	65	16	17	482	427	877	403	110	38	18	11	29
20	30	17	17	749	421	796	431	107	38	19	12	30
21	13	17	e25	683	386	772	358	92	38	19	12	31
22	12	16	e190	617	303	772	418	88	32	19	12	22
23	15	17	e300	485	243	618	409	84	16	19	12	22
24	18	17	e180	1510	244	550	452	109	22	19	12	22
25	18	17	e120	2800	291	567	494	120	21	19	12	22
26	18	16	e80	2510	229	599	517	100	21	18	12	22
27	e18	17	e90	1310	225	616	481	80	22	15	12	21
28	19	17	e150	873	231	724	425	85	25	14	12	14
29	20	17	e110	690	---	962	363	75	30	14	12	19
30	19	17	e88	583	---	1270	324	70	48	13	11	160
31	13	---	e50	473	---	1350	---	67	---	12	11	---
TOTAL	1278	458.4	1717	15829	11848	20738	22214	4362	1195	817	368	607.3
MEAN	41.2	15.3	55.4	511	423	669	740	141	39.8	26.4	11.9	20.2
MAX	175	17	300	2800	647	1630	1790	291	64	62	13	160
MIN	12	9.6	16	50	225	229	324	67	16	12	11	9.9

e Estimated.

WEST BRANCH SUSQUEHANNA RIVER BASIN

01545000 KETTLE CREEK NEAR WESTPORT, PA--Continued

STATISTICS OF MONTHLY MEAN DATA FOR WATER YEARS 1962 - 1999, BY WATER YEAR (WY) (SINCE REGULATION)

	OCT	NOV	DEC	JAN	FEB	MAR	APR	MAY	JUN	JUL	AUG	SEP
MEAN	196	363	420	359	455	743	809	472	271	150	103	123
MAX	1096	1060	954	857	1330	1739	2453	920	1278	677	927	1058
(WY)	1991	1971	1973	1979	1981	1979	1993	1996	1972	1972	1994	1975
MIN	13.5	5.37	55.4	63.8	78.8	167	309	141	39.8	8.06	7.69	13.0
(WY)	1965	1965	1999	1981	1963	1968	1976	1999	1999	1962	1962	1991

SUMMARY STATISTICS	FOR 1998 CALENDAR YEAR		FOR 1999 WATER YEAR		WATER YEARS 1962 - 1999	
ANNUAL TOTAL	115842.4		81431.7			
ANNUAL MEAN	317		223		371	
HIGHEST ANNUAL MEAN					575	
LOWEST ANNUAL MEAN					223	
HIGHEST DAILY MEAN	3910	Jan 9	2800	Jan 25	7200	Apr 14 1970
LOWEST DAILY MEAN	9.6	Nov 6	9.6	Nov 6	4.4	Nov 3 1964 ^a
ANNUAL SEVEN-DAY MINIMUM	11	Nov 1	9.9	Sep 9	4.6	Nov 2 1964
INSTANTANEOUS PEAK FLOW			3470	Jan 25	7540	Apr 13 1970
INSTANTANEOUS PEAK STAGE			7.02	Jan 25	10.17	Apr 13 1970
INSTANTANEOUS LOW FLOW					3.0	Dec 6 1964
10 PERCENT EXCEEDS	906		619		878	
50 PERCENT EXCEEDS	88		46		180	
90 PERCENT EXCEEDS	15		12		29	

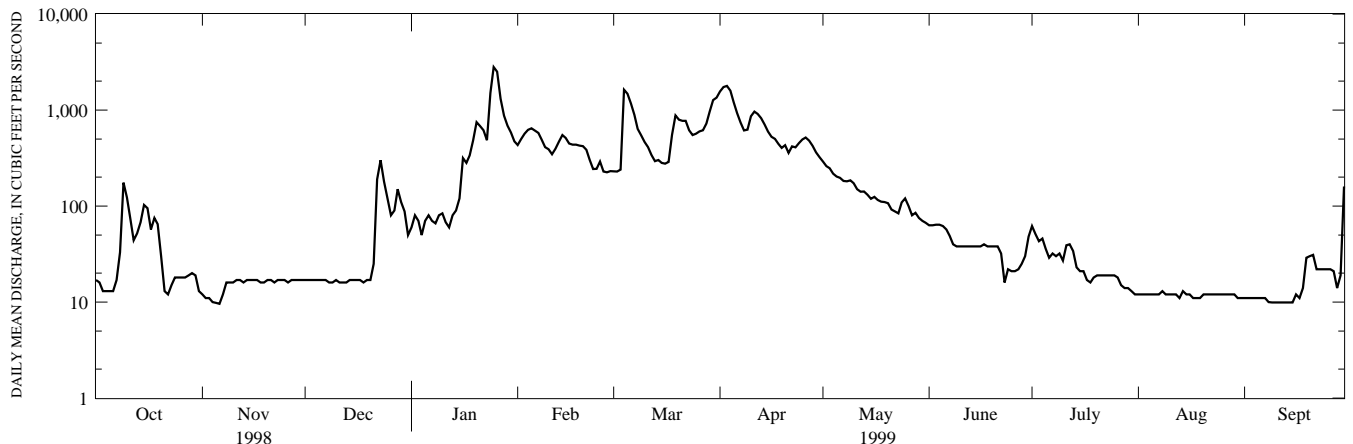
STATISTICS OF MONTHLY MEAN DATA FOR WATER YEARS 1955 - 1961, BY WATER YEAR (WY) (PRIOR TO REGULATION)

	OCT	NOV	DEC	JAN	FEB	MAR	APR	MAY	JUN	JUL	AUG	SEP
MEAN	192	247	373	297	387	837	1066	541	204	131	120	72.8
MAX	709	647	708	564	713	1373	1496	1103	631	318	276	177
(WY)	1956	1960	1957	1959	1961	1955	1958	1960	1960	1958	1956	1958
MIN	23.7	41.3	27.0	27.6	127	394	411	151	63.9	25.1	16.9	24.3
(WY)	1958	1961	1961	1961	1958	1960	1955	1955	1955	1955	1957	1957

SUMMARY STATISTICS WATER YEARS 1955 - 1961

ANNUAL MEAN	372	
HIGHEST ANNUAL MEAN	492	1956
LOWEST ANNUAL MEAN	266	1955
HIGHEST DAILY MEAN	5970	Mar 8 1956
LOWEST DAILY MEAN	8.9	Sep 10 1957
ANNUAL SEVEN-DAY MINIMUM	10	Sep 24 1959
INSTANTANEOUS PEAK FLOW	^b 7970	Mar 8 1956
INSTANTANEOUS PEAK STAGE	^c 13.31	Jan 22 1959
INSTANTANEOUS LOW FLOW	8.9	Sep 9,10 1957
ANNUAL RUNOFF (CFSM)	1.60	
ANNUAL RUNOFF (INCHES)	21.69	
10 PERCENT EXCEEDS	942	
50 PERCENT EXCEEDS	160	
90 PERCENT EXCEEDS	26	

- a Also Nov. 6, 12, 1964.
- b Gage height 10.48 ft.
- c Backwater from ice.



1-YEAR HYDROGRAPH
OCTOBER 1, 1998 TO SEPTEMBER 30, 1999