

OHIO RIVER MAIN STEM

03011020 ALLEGHENY RIVER AT SALAMANCA, NY

LOCATION.--Lat 42°09'23", long 78°42'56", Cattaraugus County, Hydrologic Unit 05010001, on left bank 230 ft upstream from Main Street bridge in Salamanca, 1.3 mi downstream from Great Valley Creek, and 1.6 mi upstream from Little Valley Creek.

DRAINAGE AREA.--1,608 mi².

PERIOD OF RECORD.--September 1903 to current year. Monthly discharge only for some periods, published in WSP 1305. Prior to October 1964, published as "at Red House."

REVISED RECORDS.--WSP 1385: 1907, 1909-12, 1913(M), 1914-15, 1916-17(M), 1925, 1927. WSP 1907: Drainage area.

GAGE.--Water-stage recorder. Datum of gage is 1,358.00 ft above sea level (Corps of Engineers bench mark). Prior to Sept. 3, 1917, nonrecording gage and Sept. 4, 1917 to Sept. 30, 1964, water-stage recorder at site 7.5 mi downstream at different datum. Oct. 1, 1964 to Sept. 30, 1967, at present site at datum 0.04 ft lower.

REMARKS.--Records good except those for estimated daily discharges, which are fair. U.S. Army Corps of Engineers telephone gage-height telemeter and satellite gage-height and precipitation telemeter at station. Several measurements of water temperature were made during the year.

EXTREMES FOR PERIOD OF RECORD.--Maximum discharge, 73,000 ft³/s, June 23, 1972, gage height, 24.01 ft, from floodmarks; minimum instantaneous discharge not determined.

EXTREMES FOR CURRENT YEAR.--Peak discharges greater than base discharge of 17,000 ft³/s and maximum (*):

Date	Time	Discharge ft ³ /s	Gage Height (ft)	Date	Time	Discharge ft ³ /s	Gage Height (ft)
Jan. 24	1900	*21,900	*11.51	No other peak greater than base discharge.			

Minimum discharge 139 ft³/s, Aug. 19, 20, gage height, 2.58 ft.

DISCHARGE, CUBIC FEET PER SECOND, WATER YEAR OCTOBER 1998 TO SEPTEMBER 1999
DAILY MEAN VALUES

DAY	OCT	NOV	DEC	JAN	FEB	MAR	APR	MAY	JUN	JUL	AUG	SEP
1	227	287	317	e600	3540	2000	8050	2160	715	560	273	179
2	207	268	341	e600	3790	1870	9220	1950	710	667	239	171
3	192	257	350	e700	5790	1840	9360	1760	774	984	218	166
4	185	256	346	e650	5940	3630	10100	1610	713	804	195	158
5	184	283	335	e600	5450	e3700	9890	1500	624	518	198	152
6	184	266	344	e550	4650	e3200	8140	1410	557	417	183	148
7	185	255	348	e500	4140	e2600	6570	1330	519	511	173	173
8	332	260	356	e500	3720	e2350	5140	2910	499	470	172	218
9	854	253	341	e500	3280	e2300	5310	7760	482	424	177	219
10	995	255	325	e550	3420	e2200	8850	5670	459	636	172	210
11	801	328	305	e600	3260	e2100	7500	3890	537	656	162	214
12	600	361	296	e600	4290	e1900	6930	3020	460	503	158	193
13	470	381	284	e600	5690	e1800	5760	2500	403	381	158	177
14	403	353	277	e650	e4700	e1700	4700	2130	382	328	194	175
15	390	314	260	e850	e4000	1660	4010	1830	406	296	222	181
16	379	300	265	e1000	3760	1620	3710	1590	412	283	182	177
17	373	287	264	e1000	3820	1920	4380	1400	394	262	166	294
18	345	281	278	e1100	4070	5380	4630	1260	362	269	151	382
19	324	271	283	e2400	3680	6050	3950	1190	344	273	144	333
20	311	275	294	4400	3200	4710	3570	1120	327	289	1210	269
21	419	297	357	4150	e2800	4410	3350	1010	309	263	3560	244
22	454	314	3510	3660	e2200	4420	3070	916	291	289	1030	232
23	434	327	4510	6710	e1850	4070	3440	888	275	305	561	223
24	465	324	2780	18000	e1800	3860	5480	1100	256	268	392	209
25	423	309	e1900	19100	e1750	4140	4560	1610	246	234	315	202
26	390	303	e1400	15900	1670	3890	3960	1660	242	217	272	191
27	377	302	e1300	13000	1530	3760	3570	1350	235	207	251	177
28	372	304	e1050	10000	1630	4110	3160	1110	349	194	237	169
29	362	312	e900	8120	---	4900	2770	954	588	194	220	167
30	321	302	e650	5650	---	5860	2430	841	624	187	201	1330
31	304	---	e550	4270	---	6620	---	768	---	213	193	---
TOTAL	12262	8885	25116	127510	99420	104570	165560	60197	13494	12102	11979	7333
MEAN	396	296	810	4113	3551	3373	5519	1942	450	390	386	244
MAX	995	381	4510	19100	5940	6620	10100	7760	774	984	3560	1330
MIN	184	253	260	500	1530	1620	2430	768	235	187	144	148
CFSM	.25	.18	.50	2.56	2.21	2.10	3.43	1.21	.28	.24	.24	.15
IN.	.28	.21	.58	2.95	2.30	2.42	3.83	1.39	.31	.28	.28	.17

e Estimated

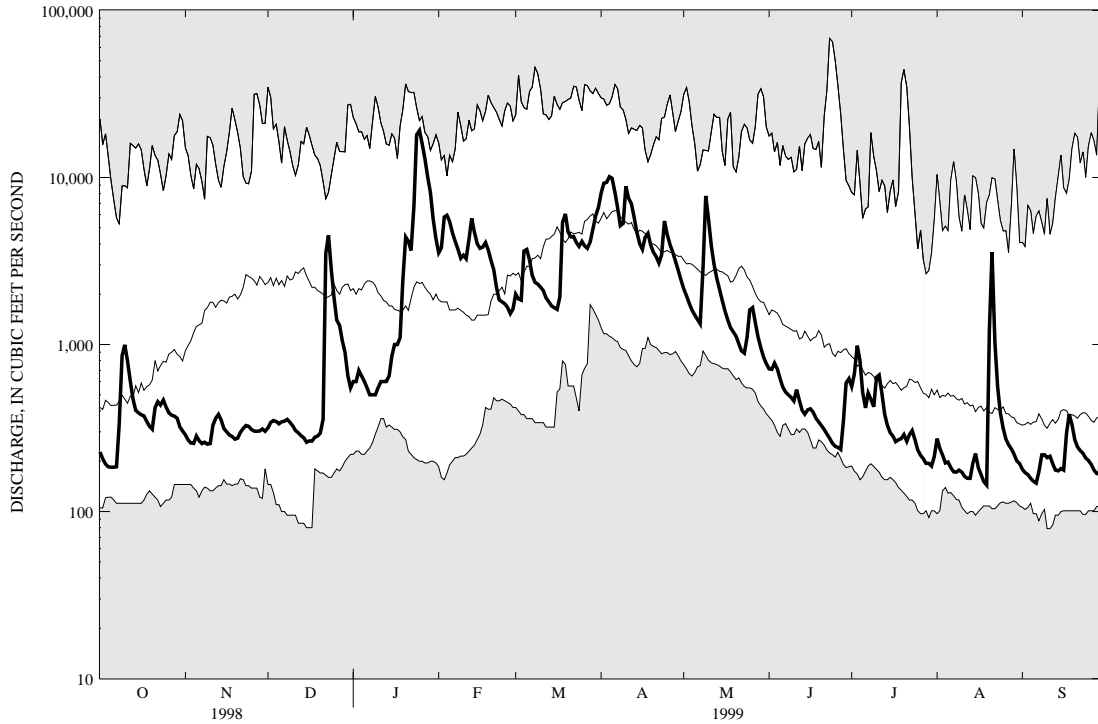
OHIO RIVER MAIN STEM

03011020 ALLEGHENY RIVER AT SALAMANCA, NY--Continued

STATISTICS OF MONTHLY MEAN DATA FOR WATER YEARS 1904 - 1999, BY WATER YEAR (WY)

	OCT	NOV	DEC	JAN	FEB	MAR	APR	MAY	JUN	JUL	AUG	SEP
MEAN	1348	2550	3082	3368	3174	5975	5828	3462	2002	1095	717	834
MAX	5801	8605	9147	10200	9683	14850	15540	9574	11520	6074	3882	7477
(WY)	1991	1928	1928	1913	1976	1936	1940	1943	1972	1942	1977	1977
MIN	124	146	189	255	550	1983	970	796	299	150	119	118
(WY)	1931	1931	1961	1961	1905	1937	1946	1985	1934	1934	1930	1932

SUMMARY STATISTICS	FOR 1998 CALENDAR YEAR	FOR 1999 WATER YEAR	WATER YEARS 1904 - 1999
ANNUAL TOTAL	827848	648428	
ANNUAL MEAN	2268	1777	2783
HIGHEST ANNUAL MEAN			4174
LOWEST ANNUAL MEAN			1777
HIGHEST DAILY MEAN	30500	Jan 9	19100
LOWEST DAILY MEAN	184	Oct 5	144
ANNUAL SEVEN-DAY MINIMUM	195	Oct 1	164
ANNUAL RUNOFF (CFSM)	1.41		1.10
ANNUAL RUNOFF (INCHES)	19.15		15.00
10 PERCENT EXCEEDS	5110	4670	6760
50 PERCENT EXCEEDS	1000	519	1510
90 PERCENT EXCEEDS	260	194	286



1999 WATER YEAR DAILY MEAN DISCHARGE (BOLD) WITH DAILY MEDIAN FOR PERIOD OF RECORD. SHADED AREAS SHOW DAILY MAXIMUM AND MINIMUM FOR PERIOD OF RECORD THROUGH PREVIOUS WATER YEAR.

