

KINZUA CREEK BASIN

03011800 KINZUA CREEK NEAR GUFFEY, PA

LOCATION.--Lat 41°45'59", long 78°43'08", McKean County, Hydrologic Unit 05010001, in Allegheny National Forest, on right bank 130 ft upstream from bridge on U.S. Highway 219, 0.2 mi upstream from Wintergreen Run, 1.0 mi downstream from Pine Run, and 1.5 mi west of Guffey.

DRAINAGE AREA.--46.4 mi².

PERIOD OF RECORD.--Occasional low-flow measurements, published as "at Tallyho," water years 1959-65. October 1965 to current year.

GAGE.--Water-stage recorder. Elevation of gage is 1,540 ft above sea level, from topographic map.

REMARKS.--Records good except those for estimated daily discharges, which are poor. Several measurements of water temperature were made during the year. U.S. Army Corps of Engineers satellite telemetry at station.

PEAK DISCHARGES FOR CURRENT YEAR.--Peak discharges greater than a base discharge of 500 ft³/s and maximum (*):

Date	Time	Discharge ft ³ /s	Gage Height (ft)	Date	Time	Discharge ft ³ /s	Gage Height (ft)
Jan. 24	0700	*870	*5.52	No other peak greater than base discharge.			

**DISCHARGE, CUBIC FEET PER SECOND, WATER YEAR OCTOBER 1998 TO SEPTEMBER 1999
DAILY MEAN VALUES**

DAY	OCT	NOV	DEC	JAN	FEB	MAR	APR	MAY	JUN	JUL	AUG	SEP
1	10	14	22	e36	106	e66	260	59	19	9.0	7.8	5.1
2	9.4	14	21	e32	141	e53	276	54	21	25	5.4	5.1
3	9.7	13	20	e31	178	83	228	49	20	12	4.9	5.1
4	13	13	20	e34	153	123	250	45	18	8.2	4.8	4.6
5	11	13	24	e35	140	95	216	42	15	7.4	5.1	4.5
6	12	13	24	e34	123	82	167	38	14	7.6	4.9	4.6
7	14	13	24	e34	117	74	143	37	14	9.8	4.8	6.2
8	97	15	23	e35	107	e68	123	199	13	7.2	4.8	5.4
9	58	14	22	e34	99	e62	211	197	13	6.6	4.8	5.2
10	48	18	21	e34	99	e56	243	130	11	12	4.6	5.3
11	31	30	20	e33	93	e52	188	106	12	9.2	4.8	4.9
12	23	22	19	e32	150	e45	177	92	11	7.0	4.8	4.8
13	20	18	20	e43	146	e42	141	82	11	6.2	4.7	4.8
14	19	16	20	e68	122	e40	120	72	12	6.1	5.4	5.4
15	24	16	19	e99	114	e40	106	62	14	6.0	5.0	5.3
16	22	16	20	e120	107	e40	120	54	10	5.8	4.5	5.8
17	19	16	19	e122	118	e45	190	47	9.8	5.6	4.5	7.4
18	18	15	20	e270	115	e60	158	42	9.6	5.5	4.5	5.6
19	25	15	19	403	e90	93	128	43	9.1	5.3	4.5	5.3
20	21	18	23	328	e85	81	130	36	8.3	5.6	20	5.3
21	21	22	51	271	e79	89	118	31	7.6	5.2	24	6.1
22	21	20	295	330	e70	91	107	28	7.0	6.1	10	5.7
23	19	20	135	489	e66	85	128	28	7.0	5.6	6.7	5.1
24	17	20	e100	713	e58	94	145	62	6.5	5.4	5.8	5.1
25	16	19	e90	417	e54	104	109	74	6.2	5.1	5.4	5.1
26	16	21	e84	267	e50	100	99	50	6.2	5.0	5.4	5.0
27	16	21	e70	206	e54	109	90	42	6.0	4.9	5.2	5.4
28	16	19	e62	195	e54	131	82	32	12	4.6	5.1	5.4
29	18	18	e54	161	---	163	73	26	24	7.7	4.8	11
30	16	18	e50	130	---	182	65	22	17	5.1	4.9	88
31	15	---	e41	111	---	194	---	20	---	5.1	5.1	---
TOTAL	695.1	520	1452	5147	2888	2642	4591	1901	364.3	226.9	197.0	247.6
MEAN	22.4	17.3	46.8	166	103	85.2	153	61.3	12.1	7.32	6.35	8.25
MAX	97	30	295	713	178	194	276	199	24	25	24	88
MIN	9.4	13	19	31	50	40	65	20	6.0	4.6	4.5	4.5
CFSM	.48	.37	1.01	3.58	2.22	1.84	3.30	1.32	.26	.16	.14	.18
IN.	.56	.42	1.16	4.13	2.32	2.12	3.68	1.52	.29	.18	.16	.20

STATISTICS OF MONTHLY MEAN DATA FOR WATER YEARS 1966 - 1999, BY WATER YEAR (WY)

MEAN	49.4	86.3	105	82.1	89.8	137	137	84.9	71.2	34.0	29.7	38.5
MAX	137	166	281	166	251	269	289	182	272	99.0	126	154
(WY)	1991	1971	1984	1998	1976	1979	1994	1989	1989	1992	1980	1977
MIN	6.69	15.3	32.6	19.8	18.4	61.6	67.9	23.8	9.49	6.29	4.96	5.16
(WY)	1992	1992	1990	1981	1987	1970	1976	1985	1991	1991	1991	1991

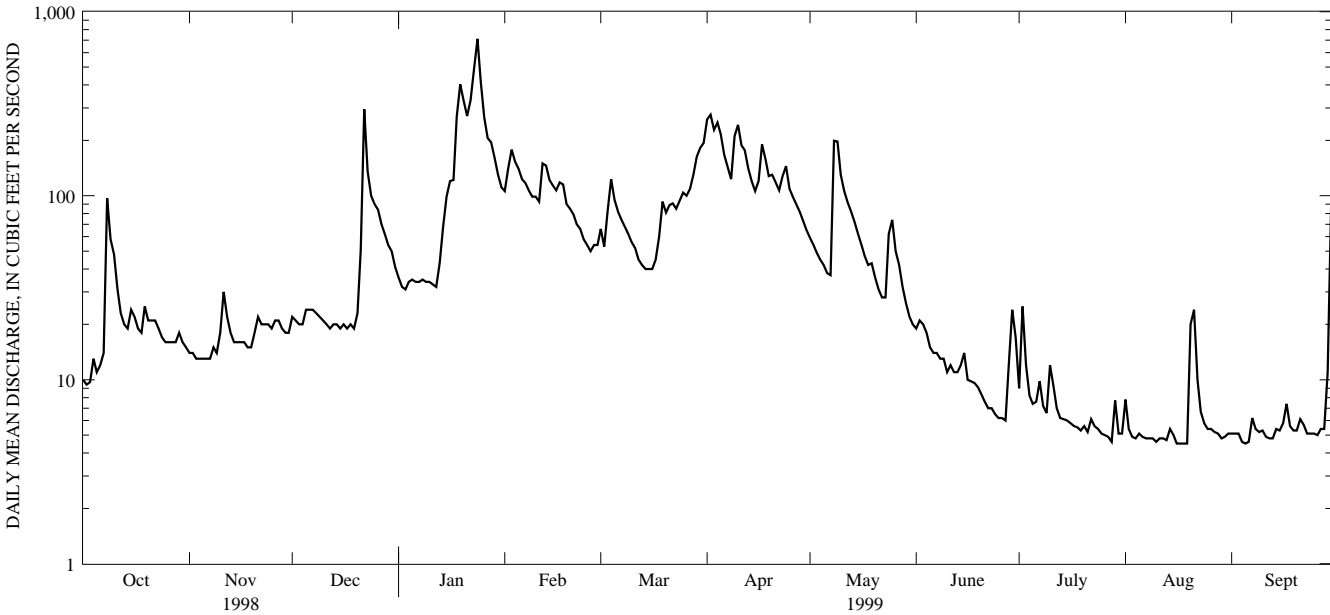
e Estimated.

KINZUA CREEK BASIN

03011800 KINZUA CREEK NEAR GUFFEY, PA--Continued

SUMMARY STATISTICS	FOR 1998 CALENDAR YEAR		FOR 1999 WATER YEAR		WATER YEARS 1966 - 1999	
ANNUAL TOTAL	21250.0		20871.9			
ANNUAL MEAN	58.2		57.2		78.6	
HIGHEST ANNUAL MEAN					113	1984
LOWEST ANNUAL MEAN					57.2	1999
HIGHEST DAILY MEAN	1160	Jan 8	713	Jan 24	2120	Jun 23 1972
LOWEST DAILY MEAN	3.5	Aug 8	4.5	Aug 16-20 ^a	2.2	Sep 30 1995
ANNUAL SEVEN-DAY MINIMUM	4.3	Aug 2	4.7	Aug 13	3.3	Sep 10 1991
INSTANTANEOUS PEAK FLOW			870	Jan 24	b5220	Jun 22 1972
INSTANTANEOUS PEAK STAGE			5.52	Jan 24	c8.99	Jun 22 1972
INSTANTANEOUS LOW FLOW			4.5	Jul 28,29 ^d	2.0	Jul 29 1978
ANNUAL RUNOFF (CFSM)	1.25		1.23		1.69	
ANNUAL RUNOFF (INCHES)	17.04		16.73		23.03	
10 PERCENT EXCEEDS	127		142		171	
50 PERCENT EXCEEDS	24		22		50	
90 PERCENT EXCEEDS	8.4		5.1		12	

- a Also Sept. 5.
- b From rating curve extended above 1,300 ft³/s on basis of slope-area measurement at gage height 8.33 ft.
- c From peak-stage indicator.
- d Also Aug. 7, 10, 13, 14, 16-20, Sept. 4-6.



1-YEAR HYDROGRAPH
OCTOBER 1, 1998 TO SEPTEMBER 30, 1999

