

CLARION RIVER BASIN

03026500 SEVENMILE RUN NEAR RASSELAS, PA

LOCATION.--Lat 41°37'52", long 78°34'37", McKean County, Hydrologic Unit 05010005, on right bank 300 ft upstream from highway bridge, 600 ft upstream from Fivemile Run, and 3.2 mi northeast of Rasselas.

DRAINAGE AREA.--7.84 mi².

PERIOD OF RECORD.--October 1951 to current year.

GAGE.--Water-stage recorder and concrete control. Datum of gage is 1,690.73 ft above sea level.

REMARKS.--Records good except those for estimated daily discharges, which are poor. Several measurements of water temperature were made during the year. U.S. Army Corps of Engineers satellite telemetry at station.

PEAK DISCHARGES FOR CURRENT YEAR.--Peak discharges greater than a base discharge of 200 ft³/s and maximum (*):

Date	Time	Discharge ft ³ /s	Gage Height (ft)	Date	Time	Discharge ft ³ /s	Gage Height (ft)
Jan. 24	0600	*283	*4.11	No other peak greater than base discharge.			

DISCHARGE, CUBIC FEET PER SECOND, WATER YEAR OCTOBER 1998 TO SEPTEMBER 1999
DAILY MEAN VALUES

DAY	OCT	NOV	DEC	JAN	FEB	MAR	APR	MAY	JUN	JUL	AUG	SEP
1	.73	1.9	3.5	e6.4	19	e8.8	61	12	2.8	1.7	1.8	.22
2	.73	1.8	3.3	e6.8	28	e9.9	59	11	3.0	14	.87	.23
3	1.0	1.7	3.3	e6.8	40	13	46	9.7	3.1	3.8	.56	.23
4	1.9	1.7	3.3	e6.5	33	22	42	8.8	2.8	2.6	.46	.22
5	1.3	1.6	3.5	e7.2	30	22	36	7.7	2.4	2.1	.55	.20
6	.95	1.6	3.7	e6.8	26	e13	28	6.9	2.2	2.0	.55	.50
7	.85	1.6	3.7	e6.3	23	e12	24	6.5	2.1	2.6	.40	.93
8	19	1.7	3.5	e6.0	21	e11	21	26	2.3	1.8	.87	.58
9	9.4	1.5	3.3	e6.2	18	e10	34	26	1.7	1.5	.92	.36
10	8.1	2.2	3.1	e6.6	18	e9.6	40	20	1.7	3.4	.54	.32
11	5.5	4.7	3.1	e5.6	17	e8.9	33	17	1.7	2.0	.52	.20
12	4.3	3.6	2.9	e4.9	24	e8.2	33	15	1.6	1.5	.32	.16
13	3.7	3.1	2.8	e4.8	26	e7.8	27	13	1.4	1.3	.32	.16
14	3.5	2.9	2.9	32	22	e7.5	23	11	1.8	1.2	1.1	.49
15	3.4	2.9	2.7	32	19	e7.3	20	9.9	2.2	1.1	1.5	.42
16	3.1	2.7	2.6	31	18	e7.2	21	8.5	1.5	.95	.73	.62
17	2.7	2.7	2.7	30	20	e7.8	35	7.4	1.4	.85	.53	1.0
18	2.6	2.6	2.6	64	21	24	31	6.4	1.3	.83	.46	.40
19	3.5	2.5	2.5	55	18	19	28	5.9	1.3	.78	.40	.26
20	3.0	2.8	2.7	24	16	17	29	5.3	1.1	.85	.72	.31
21	2.7	3.4	8.1	17	15	19	26	4.6	1.0	.77	2.0	.62
22	2.8	3.0	94	23	16	19	24	4.2	.90	.94	1.1	.63
23	2.6	2.9	41	79	18	18	31	4.1	.78	1.0	.71	.50
24	2.5	2.9	e27	197	e9.8	20	32	7.9	.74	.74	.55	.41
25	2.3	2.8	e17	82	e8.4	23	26	9.5	.70	.77	.40	.36
26	2.2	3.2	e12	50	e8.0	25	23	6.1	.64	.74	.49	.29
27	2.1	3.4	e10	38	e7.4	29	20	5.6	.71	.55	.55	.30
28	2.1	3.3	e8.8	38	e8.2	36	17	4.4	2.7	.42	.54	.32
29	2.4	3.1	e7.6	32	---	44	15	3.7	3.1	1.2	.46	.73
30	2.2	3.1	e6.4	26	---	46	14	3.2	2.4	.96	.35	11
31	2.1	---	e6.1	21	---	47	---	2.9	---	.69	.32	---
TOTAL	105.26	78.9	299.7	951.9	547.8	572.0	899	290.2	53.07	55.64	21.59	22.97
MEAN	3.40	2.63	9.67	30.7	19.6	18.5	30.0	9.36	1.77	1.79	.70	.77
MAX	19	4.7	94	197	40	47	61	26	3.1	14	2.0	11
MIN	.73	1.5	2.5	4.8	7.4	7.2	14	2.9	.64	.42	.32	.16
CFSM	.43	.34	1.23	3.92	2.50	2.35	3.82	1.19	.23	.23	.09	.10
IN.	.50	.37	1.42	4.52	2.60	2.71	4.27	1.38	.25	.26	.10	.11

STATISTICS OF MONTHLY MEAN DATA FOR WATER YEARS 1952 - 1999, BY WATER YEAR (WY)

MEAN	8.17	14.7	17.3	15.2	16.9	28.7	29.1	17.2	11.8	5.48	5.21	6.21
MAX	29.7	49.5	35.9	56.4	49.9	70.8	70.6	47.8	74.0	26.0	32.8	39.7
(WY)	1971	1986	1978	1952	1976	1964	1970	1953	1989	1992	1956	1987
MIN	.32	.66	.94	1.55	2.22	9.85	11.2	4.05	1.14	.50	.52	.28
(WY)	1965	1965	1961	1961	1987	1993	1976	1985	1991	1991	1966	1964

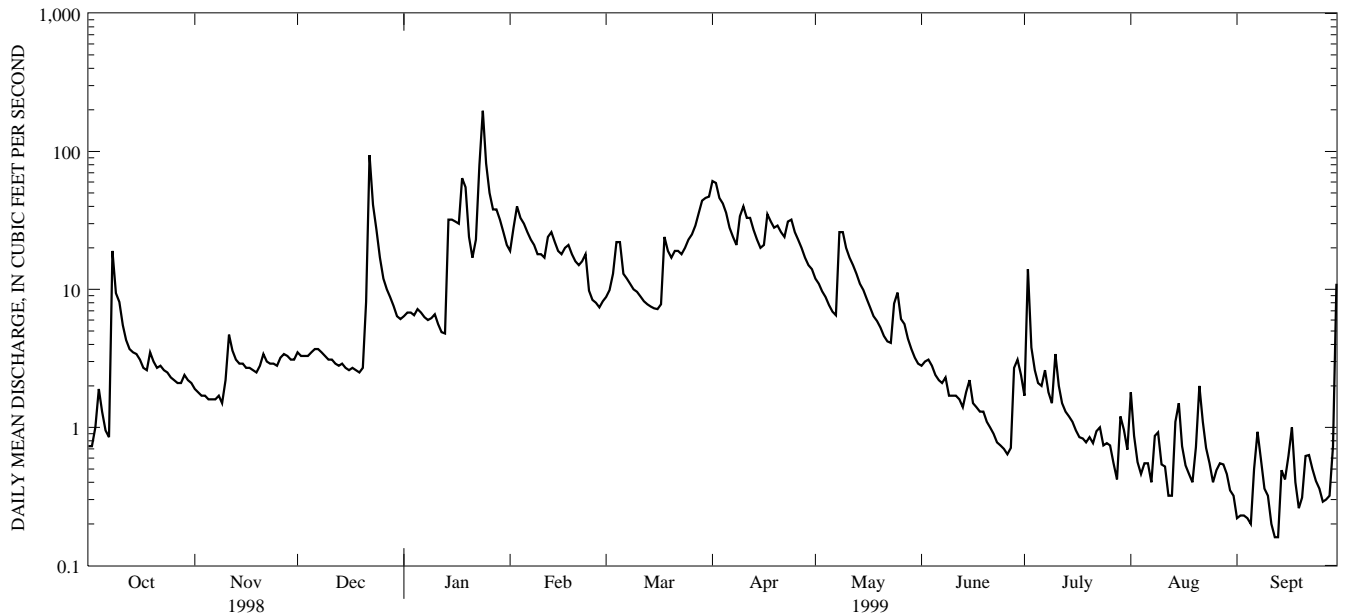
e Estimated.

CLARION RIVER BASIN

03026500 SEVENMILE RUN NEAR RASSELAS, PA--Continued

SUMMARY STATISTICS	FOR 1998 CALENDAR YEAR		FOR 1999 WATER YEAR		WATER YEARS 1952 - 1999	
ANNUAL TOTAL	4340.27		3898.03			
ANNUAL MEAN	11.9		10.7		14.6	
HIGHEST ANNUAL MEAN					21.1 1984	
LOWEST ANNUAL MEAN					10.4 1965	
HIGHEST DAILY MEAN	282	Jan 8	197	Jan 24	465	Jun 20 1989
LOWEST DAILY MEAN	.37	Aug 7,8	.16	Sep 12,13	.07	Sep 21 1955
ANNUAL SEVEN-DAY MINIMUM	.43	Aug 3	.25	Aug 30	.14	Sep 16 1955
INSTANTANEOUS PEAK FLOW			283	Jan 24	a2300	Sep 13 1987
INSTANTANEOUS PEAK STAGE			4.11	Jan 24	5.30	Sep 13 1987
INSTANTANEOUS LOW FLOW			.10	Sep 13	.07	Sep 21 1955
ANNUAL RUNOFF (CFSM)	1.52		1.36		1.86	
ANNUAL RUNOFF (INCHES)	20.59		18.50		25.24	
10 PERCENT EXCEEDS	26		29		32	
50 PERCENT EXCEEDS	5.1		3.3		8.2	
90 PERCENT EXCEEDS	1.1		.54		.98	

a From rating curve extended above 600 ft³/s on basis of slope-area measurement at gage height 4.60 ft and contracted-opening measurement at gage height 5.02 ft.



1-YEAR HYDROGRAPH
OCTOBER 1, 1998 TO SEPTEMBER 30, 1999