

## KISKIMINETAS RIVER BASIN

## 03042280 YELLOW CREEK NEAR HOMER CITY, PA

**LOCATION.**--Lat 40°34'18", long 79°06'13", Indiana County, Hydrologic Unit 05010007, on left bank 0.3 mi upstream from Central Indiana County Water Authority dam, 0.4 mi upstream from Ferrier Run, which has been diverted, and 3.5 mi northeast of Homer City.

**DRAINAGE AREA.**--57.4 mi<sup>2</sup>, excludes that of Ferrier Run.

**PERIOD OF RECORD.**--October 1967 to current year.

**REVISED RECORDS.**--WDR PA-76-3: Drainage area.

**GAGE.**--Water-stage recorder. Elevation of gage is 1,140 ft above sea level, from topographic map.

**REMARKS.**--Records good except those for estimated daily discharges, which are poor. Flow regulated since 1971 by Yellow Creek Lake (station 03042260) 4.2 mi upstream. Several measurements of water temperature were made during the year. Satellite telemetry at station.

DISCHARGE, CUBIC FEET PER SECOND, WATER YEAR OCTOBER 1998 TO SEPTEMBER 1999  
DAILY MEAN VALUES

DAY	OCT	NOV	DEC	JAN	FEB	MAR	APR	MAY	JUN	JUL	AUG	SEP
1	9.6	8.5	e5.7	22	151	e50	95	99	23	8.5	9.9	8.1
2	10	8.5	e5.7	e19	143	e68	91	87	21	13	8.6	8.3
3	12	8.8	e5.7	e18	143	83	86	72	23	18	8.6	8.5
4	12	8.8	e5.7	e16	143	128	118	54	21	18	8.6	8.6
5	10	8.9	e5.7	e16	143	139	356	50	20	17	8.9	9.1
6	8.0	8.9	e5.7	e18	143	143	302	48	17	16	8.8	11
7	8.0	8.9	e5.8	e20	141	148	226	44	17	25	8.5	11
8	15	8.5	e5.8	e20	206	141	169	46	16	23	9.9	9.5
9	9.3	8.0	e5.8	e17	239	133	394	49	14	20	9.0	9.7
10	8.9	9.2	e5.8	e20	221	124	645	46	13	21	8.7	10
11	8.9	7.9	e5.8	e23	192	112	451	42	12	20	9.2	11
12	8.9	7.3	e5.8	e23	170	102	363	38	10	18	8.8	11
13	8.6	e6.4	e5.8	e30	160	93	325	36	9.2	15	12	11
14	8.4	e5.7	e5.8	e44	146	90	252	36	8.5	13	16	13
15	8.4	e5.7	e5.8	e70	129	84	213	32	8.6	12	9.7	13
16	8.1	e5.7	e5.8	e120	e110	81	e186	29	8.3	11	8.8	13
17	8.0	e5.6	e5.8	e110	e98	91	e170	27	7.9	10	8.5	14
18	8.1	e5.7	e5.8	e100	e86	198	e180	25	8.1	9.5	8.6	9.6
19	8.7	e5.7	e5.8	e130	e78	300	e150	25	8.0	9.0	8.6	8.0
20	8.4	e5.7	e5.8	e190	e68	281	e160	23	8.0	8.7	8.6	8.5
21	8.5	e5.7	e6.4	e180	e64	262	e160	21	7.9	8.5	8.6	9.9
22	8.5	e5.7	53	e170	e54	350	181	18	8.3	9.6	8.6	9.9
23	8.1	e5.7	82	e200	e45	320	227	20	8.0	8.7	8.6	10
24	8.0	e5.7	83	e300	e35	264	245	30	8.0	9.1	8.5	11
25	8.0	e5.7	73	1150	e35	222	222	39	8.0	9.0	8.6	12
26	8.0	e5.7	58	562	e34	190	189	38	8.4	8.5	9.1	13
27	8.0	e5.7	47	370	e33	166	171	35	10	8.6	8.6	14
28	8.1	e5.7	40	289	e40	146	151	32	11	9.0	8.6	13
29	8.5	e5.7	34	249	---	130	131	30	12	10	8.3	14
30	8.5	e5.7	32	204	---	117	112	27	9.3	8.9	8.0	23
31	8.5	---	29	173	---	103	---	24	---	8.9	8.0	---
TOTAL	278.0	205.4	652.8	4873	3250	4859	6721	1222	364.5	404.5	281.8	335.7
MEAN	8.97	6.85	21.1	157	116	157	224	39.4	12.1	13.0	9.09	11.2
MAX	15	9.2	83	1150	239	350	645	99	23	25	16	23
MIN	8.0	5.6	5.7	16	33	50	86	18	7.9	8.5	8.0	8.0
CFSM	.16	.12	.37	2.74	2.02	2.73	3.90	.69	.21	.23	.16	.19
IN.	.18	.13	.42	3.16	2.11	3.15	4.36	.79	.24	.26	.18	.22

e Estimated.

KISKIMINETAS RIVER BASIN

03042280 YELLOW CREEK NEAR HOMER CITY, PA--Continued

STATISTICS OF MONTHLY MEAN DATA FOR WATER YEARS 1971 - 1999, BY WATER YEAR (WY) (SINCE REGULATION)

	OCT	NOV	DEC	JAN	FEB	MAR	APR	MAY	JUN	JUL	AUG	SEP
MEAN	53.4	101	138	129	166	205	158	119	74.7	63.5	29.9	38.6
MAX	186	303	254	314	374	447	246	358	324	443	90.3	163
(WY)	1978	1998	1973	1996	1981	1994	1987	1978	1972	1977	1980	1996
MIN	6.10	6.85	21.1	33.9	44.4	70.8	68.8	32.1	12.1	5.95	5.46	8.16
(WY)	1992	1999	1999	1981	1993	1990	1997	1975	1999	1971	1971	1991

SUMMARY STATISTICS FOR 1998 CALENDAR YEAR FOR 1999 WATER YEAR WATER YEARS 1971 - 1999

ANNUAL TOTAL	29674.3			23447.7			106					
ANNUAL MEAN	81.3			64.2			63.6					
HIGHEST ANNUAL MEAN							145					
LOWEST ANNUAL MEAN							1978					
HIGHEST DAILY MEAN	901			Jan 9			1150			Jan 25		
LOWEST DAILY MEAN	e5.6			Nov 17			e5.6			Nov 17		
ANNUAL SEVEN-DAY MINIMUM	a5.7			Nov 14			a5.7			Nov 14		
INSTANTANEOUS PEAK FLOW							2100			Jan 24		
INSTANTANEOUS PEAK STAGE							5.89			Jan 24		
ANNUAL RUNOFF (CFSM)	1.42						1.12			1.84		
ANNUAL RUNOFF (INCHES)	19.23						15.20			25.07		
10 PERCENT EXCEEDS	205						187			238		
50 PERCENT EXCEEDS	27						15			61		
90 PERCENT EXCEEDS	5.8						5.8			12		

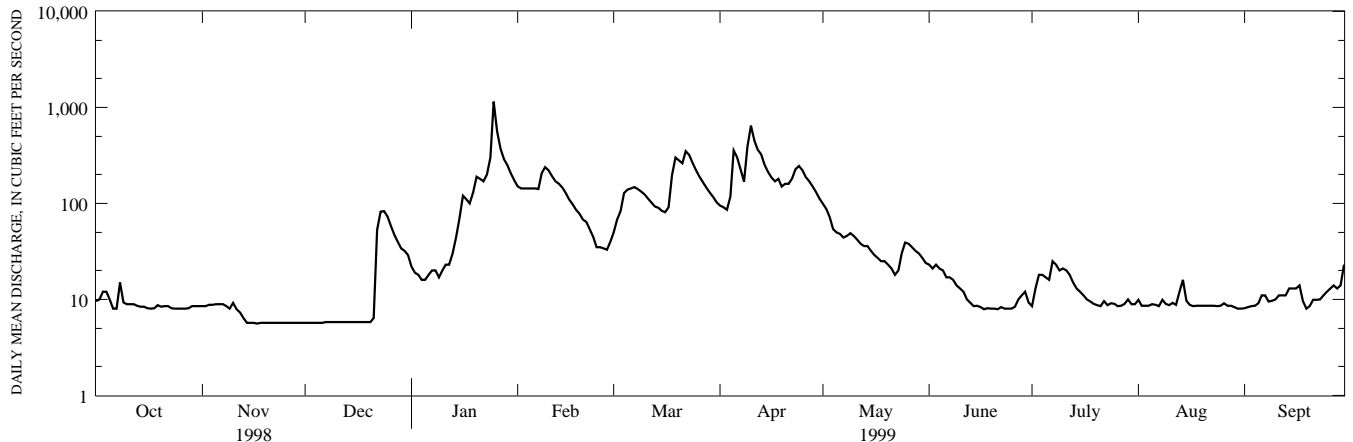
STATISTICS OF MONTHLY MEAN DATA FOR WATER YEARS 1968 - 1970, BY WATER YEAR (WY) (PRIOR TO REGULATION)

	OCT	NOV	DEC	JAN	FEB	MAR	APR	MAY	JUN	JUL	AUG	SEP
MEAN	24.6	72.0	119	113	146	136	160	148	51.0	39.6	39.9	26.9
MAX	51.8	105	142	148	210	199	243	212	74.7	75.4	63.0	66.6
(WY)	1968	1968	1969	1969	1970	1970	1970	1968	1970	1969	1969	1970
MIN	7.87	43.9	102	90.8	112	46.4	62.7	103	25.5	7.11	13.0	5.34
(WY)	1969	1970	1968	1970	1969	1969	1968	1969	1969	1968	1968	1969

SUMMARY STATISTICS WATER YEARS 1968 - 1970

ANNUAL MEAN	89.4		
HIGHEST ANNUAL MEAN	104		
LOWEST ANNUAL MEAN	80.7		
HIGHEST DAILY MEAN	1100		
LOWEST DAILY MEAN	3.0		
ANNUAL SEVEN-DAY MINIMUM	3.3		
INSTANTANEOUS PEAK FLOW	c1300		
INSTANTANEOUS PEAK STAGE	d7.83		
INSTANTANEOUS LOW FLOW	1.4		
ANNUAL RUNOFF (CFSM)	1.56		
ANNUAL RUNOFF (INCHES)	21.16		
10 PERCENT EXCEEDS	213		
50 PERCENT EXCEEDS	50		
90 PERCENT EXCEEDS	8.0		

- a Computed using estimated daily discharges.
- b From rating curve extended above 4,100 ft<sup>3</sup>/s on basis of computation of peak flow over dam, gage height 7.46 ft.
- c About.
- d Backwater from ice.
- e Estimated.



1-YEAR HYDROGRAPH  
OCTOBER 1, 1998 TO SEPTEMBER 30, 1999