

KISKIMINETAS RIVER BASIN

03042500 TWO LICK CREEK AT GRACETON, PA

LOCATION.--Lat 40°31'02", long 79°10'19", Indiana County, Hydrologic Unit 05010007, on right bank 0.8 mi upstream from highway bridge on road leading west from Graceton, 1.1 mi downstream from Tearing Run, 1.5 mi upstream from Cherry Run, and 8 mi northeast of Blairsville.

DRAINAGE AREA.--171 mi².

PERIOD OF RECORD.--September 1951 to current year.

GAGE.--Water-stage recorder. Datum of gage is 981.63 ft above sea level.

REVISED RECORDS.--WDR PA-78-3: 1977 (M).

REMARKS.--Records good except those for estimated daily discharges, which are poor. Diurnal fluctuation caused by mine pumpage and by sewage-disposal plant above station. Flow regulated since December 1968 by Two Lick Creek Reservoir 10 mi upstream, capacity, 16,240 acre-ft and since July 1971 by Yellow Creek Lake (station 03042260) 11 mi upstream. Several measurements of water temperature were made during the year. U.S. Army Corps of Engineers satellite telemetry at station.

DISCHARGE, CUBIC FEET PER SECOND, WATER YEAR OCTOBER 1998 TO SEPTEMBER 1999
DAILY MEAN VALUES

DAY	OCT	NOV	DEC	JAN	FEB	MAR	APR	MAY	JUN	JUL	AUG	SEP
1	60	65	69	e68	352	221	188	202	75	55	64	54
2	58	65	68	e66	375	229	180	187	76	95	47	57
3	62	66	68	e82	338	248	205	163	104	100	50	57
4	77	72	69	e110	334	465	306	145	87	68	52	57
5	61	74	68	e150	325	446	1120	139	69	64	58	57
6	59	74	65	e140	307	445	832	135	64	80	51	92
7	59	74	66	e130	328	416	582	127	59	84	51	79
8	126	74	70	e125	544	361	411	164	56	69	70	55
9	78	72	68	e130	694	337	1020	142	50	58	55	54
10	68	103	65	e150	490	314	2320	126	48	73	51	50
11	65	82	65	e210	446	229	1230	118	56	48	52	45
12	63	72	67	e190	372	218	1050	114	58	43	52	41
13	63	73	69	e225	340	211	685	132	57	41	88	42
14	63	72	68	e270	307	208	558	117	59	43	138	60
15	62	73	67	e230	268	211	506	107	63	47	57	48
16	61	70	67	e220	234	218	453	96	60	53	53	49
17	65	70	71	e250	231	386	440	86	60	60	51	50
18	67	71	69	e280	215	599	476	77	60	58	52	45
19	74	67	67	e320	201	644	386	94	60	55	49	43
20	64	70	63	e380	185	589	420	76	57	52	51	51
21	63	69	76	e370	149	635	412	70	59	51	50	67
22	63	69	301	e440	129	827	540	71	59	62	50	54
23	65	73	180	e1200	116	604	654	85	58	52	50	52
24	67	71	e140	e4000	e83	431	686	247	58	51	48	52
25	67	70	e130	2400	e85	494	492	318	56	51	55	54
26	67	75	e110	1120	e96	363	436	173	57	48	53	51
27	68	72	e97	710	e100	333	375	121	83	34	55	53
28	69	70	e87	700	e220	290	301	107	79	40	53	56
29	69	71	e80	617	---	241	239	88	100	70	50	84
30	65	67	e76	442	---	202	217	81	64	44	49	211
31	64	---	e72	404	---	200	---	77	---	44	49	---
TOTAL	2082	2166	2698	16129	7864	11615	17720	3985	1951	1793	1754	1820
MEAN	67.2	72.2	87.0	520	281	375	591	129	65.0	57.8	56.6	60.7
MAX	126	103	301	4000	694	827	2320	318	104	100	138	211
MIN	58	65	63	66	83	200	180	70	48	34	47	41
(†)	-27	-43	+8.3	+113	-11	+23	-2.6	-6.7	-16	-24	-26	-17

† Change in contents, equivalent in cubic feet per second, in Yellow Creek Lake and Two Lick Creek Reservoir. Records of contents in Two Lick Creek Reservoir furnished by Edison Mission.

e Estimated.

KISKIMINETAS RIVER BASIN

03042500 TWO LICK CREEK AT GRACETON, PA--Continued

STATISTICS OF MONTHLY MEAN DATA FOR WATER YEARS 1968 - 1999, BY WATER YEAR (WY) (SINCE REGULATION)

	OCT	NOV	DEC	JAN	FEB	MAR	APR	MAY	JUN	JUL	AUG	SEP
MEAN	150	270	370	362	437	530	423	319	221	184	110	135
MAX	466	689	722	745	925	1230	832	658	1091	1161	310	475
(WY)	1977	1998	1973	1996	1986	1994	1984	1978	1972	1977	1977	1996
MIN	21.0	53.2	87.0	106	116	93.9	167	86.2	53.6	30.2	40.0	29.8
(WY)	1969	1992	1999	1983	1993	1969	1968	1986	1992	1968	1968	1968

SUMMARY STATISTICS FOR 1998 CALENDAR YEAR FOR 1999 WATER YEAR WATER YEARS 1968 - 1999

ANNUAL TOTAL	90308			71577					
ANNUAL MEAN	247 †-9.1			196 †-2.3			292		
HIGHEST ANNUAL MEAN							375		
LOWEST ANNUAL MEAN							178		
HIGHEST DAILY MEAN	2930			Jan 8			e4000		
LOWEST DAILY MEAN	52			Jun 9			34		
ANNUAL SEVEN-DAY MINIMUM	55			Sep 13			47		
INSTANTANEOUS PEAK FLOW							a5960		
INSTANTANEOUS PEAK STAGE							b9.54		
10 PERCENT EXCEEDS	568						445		
50 PERCENT EXCEEDS	97						74		
90 PERCENT EXCEEDS	59						51		

STATISTICS OF MONTHLY MEAN DATA FOR WATER YEARS 1952 - 1967, BY WATER YEAR (WY) (PRIOR TO REGULATION)

	OCT	NOV	DEC	JAN	FEB	MAR	APR	MAY	JUN	JUL	AUG	SEP
MEAN	94.7	129	252	373	452	615	491	333	130	105	93.8	63.1
MAX	628	305	635	811	1093	1097	786	634	271	644	377	199
(WY)	1955	1960	1955	1952	1956	1963	1957	1966	1960	1956	1956	1962
MIN	14.2	23.6	50.1	118	176	234	236	99.7	42.3	25.2	16.9	15.9
(WY)	1964	1954	1961	1956	1963	1957	1963	1955	1965	1962	1957	1952

SUMMARY STATISTICS WATER YEARS 1952 - 1967

ANNUAL MEAN	260	
HIGHEST ANNUAL MEAN	415	
LOWEST ANNUAL MEAN	185	
HIGHEST DAILY MEAN	6800	
LOWEST DAILY MEAN	8.7	
ANNUAL SEVEN-DAY MINIMUM	12	
INSTANTANEOUS PEAK FLOW	d12900	
INSTANTANEOUS PEAK STAGE	12.71	
INSTANTANEOUS LOW FLOW	2.0	
ANNUAL RUNOFF (CFSM)	1.52	
ANNUAL RUNOFF (INCHES)	20.67	
10 PERCENT EXCEEDS	644	
50 PERCENT EXCEEDS	120	
90 PERCENT EXCEEDS	21	

† Change in contents, equivalent in cubic feet per second, in Yellow Creek Lake and Two Lick Creek Reservoir. Records of contents in Two Lick Creek Reservoir furnished by Edison Mission.

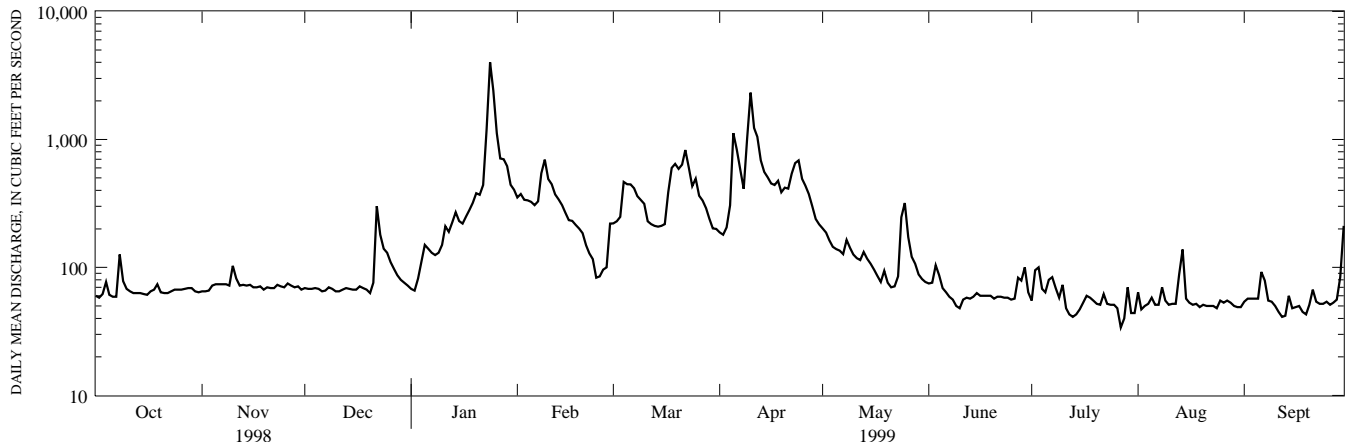
a From rating curve extended above 4,500 ft³/s on basis of slope-area measurement of peak flow and contracted-opening measurement at gage height 12.71 ft at site 1.6 mi upstream from gage, adjusted to gage site.

b From peak-stage indicator.

c Backwater, from highwater mark.

d From rating curve extended above 4,500 ft³/s on basis of contracted-opening measurement of peak flow at site 1.6 mi upstream from gage, adjusted to gage site.

e Estimated.



1-YEAR HYDROGRAPH
OCTOBER 1, 1998 TO SEPTEMBER 30, 1999