

YOUGHIOGHENY RIVER BASIN

03082500 YOUGHIOGHENY RIVER AT CONNELLSVILLE, PA

LOCATION.--Lat 40°01'03", long 79°35'38", Fayette County, Hydrologic Unit 05020006, on left bank at downstream side of Crawford Avenue bridge at Conneltsville, 1.2 mi upstream from Mounts Creek, at mile 44.0.

DRAINAGE AREA.--1,326 mi².

PERIOD OF RECORD.--July 1908 to current year. Monthly discharge only for some periods, published in WSP 1305.

REVISED RECORDS.--WSP 743: Drainage area. WSP 1305: 1912 (M), 1914 (M), 1916-17 (M), 1918, 1922-25. WSP 1435: 1919-20. WSP 1725: 1916, 1932 (monthly, yearly summaries).

GAGE.--Water-stage recorder. Datum of gage is 860.13 ft above sea level. Prior to Aug. 15, 1928, nonrecording gage, and Aug. 15, 1928 to July 7, 1958, water-stage recorder at same site and datum. July 8, 1958 to Sept. 8, 1959, nonrecording gage at site 0.4 mi downstream at different datum.

REMARKS.--Records good except those for estimated daily discharges, which are poor. Flow regulated since 1925 by Deep Creek Reservoir (station 03076000), since 1943 by Youghiogheny River Lake (station 03077000) 29.4 mi upstream, and by several smaller reservoirs above station. Several measurements of water temperature were made during the year. U.S. Army Corps of Engineers satellite telemetry at station.

DISCHARGE, CUBIC FEET PER SECOND, WATER YEAR OCTOBER 1998 TO SEPTEMBER 1999
DAILY MEAN VALUES

DAY	OCT	NOV	DEC	JAN	FEB	MAR	APR	MAY	JUN	JUL	AUG	SEP
1	700	693	257	e270	2200	2660	4610	2770	652	608	694	461
2	689	686	248	e220	2250	2710	4690	2210	628	578	648	425
3	848	675	247	e230	2530	2930	4390	1670	736	587	648	423
4	931	672	245	e300	2300	5110	4100	1250	690	544	607	508
5	824	663	246	e390	1990	4120	4360	1190	898	465	569	578
6	725	680	245	e360	1980	3910	4080	1130	918	421	552	584
7	694	680	246	e420	2520	4190	3730	1060	645	500	693	603
8	923	699	295	e400	6590	3500	2460	1380	550	489	740	788
9	1110	690	359	e650	5430	3150	6730	1440	507	486	791	626
10	1080	510	338	e1200	3990	2600	18400	1050	474	539	784	569
11	991	493	308	e1100	3230	2300	9850	913	457	571	750	572
12	852	481	287	e1000	2860	2130	11300	850	730	546	729	562
13	787	487	269	e1400	2650	1960	9920	815	816	523	710	553
14	747	495	259	e2000	2830	1900	9150	828	532	506	717	559
15	722	488	250	4510	2750	1850	7870	1160	462	487	726	546
16	704	479	237	3130	2690	1840	7960	1130	463	476	713	577
17	912	470	248	3010	2680	1930	7150	794	574	471	695	617
18	945	534	255	4350	2450	6370	5710	736	604	464	679	652
19	723	548	249	5820	1790	9100	5070	840	829	466	674	634
20	657	473	253	3870	1670	6000	6630	779	841	483	677	630
21	649	447	266	3090	1560	6860	6830	703	564	473	673	638
22	721	444	499	3710	1410	11100	6050	897	503	465	675	641
23	726	454	573	6230	1210	8190	6170	1210	485	467	694	619
24	898	345	406	15800	1240	6630	8540	1440	468	488	592	591
25	926	275	317	10000	1260	5770	6500	1680	460	477	566	598
26	736	273	e280	5550	1200	4900	5420	1340	455	479	576	588
27	684	276	e290	3850	944	4710	4760	1080	456	464	593	593
28	676	271	e300	3640	1380	4760	4250	929	517	602	674	599
29	668	261	e300	4070	---	5010	3680	990	615	1230	698	637
30	652	257	e280	3160	---	5190	2990	960	774	1080	618	776
31	685	---	e290	2590	---	4830	---	909	---	851	576	---
TOTAL	24585	14899	9142	96320	67584	138210	193350	36133	18303	17286	20731	17747
MEAN	793	497	295	3107	2414	4458	6445	1166	610	558	669	592
MAX	1110	699	573	15800	6590	11100	18400	2770	918	1230	791	788
MIN	649	257	237	220	944	1840	2460	703	455	421	552	423
(†)	-533	-361	+2.1	+1370	+286	+813	+26	-137	-335	-339	-522	-494

† Change in contents, equivalent in cubic feet per second, in Deep Creek Reservoir and Youghiogheny River Lake. Records of contents in Deep Creek Reservoir furnished by Sithe Northeast. Records of contents in Youghiogheny River Lake furnished by U.S. Army Corps of Engineers.
e Estimated.

YOUGHIOGHENY RIVER BASIN

03082500 YOUGHIOGHENY RIVER AT CONNELLSVILLE, PA--Continued

STATISTICS OF MONTHLY MEAN DATA FOR WATER YEARS 1925 - 1999, BY WATER YEAR (WY) (SINCE REGULATION)

	OCT	NOV	DEC	JAN	FEB	MAR	APR	MAY	JUN	JUL	AUG	SEP
MEAN	1435	1944	2986	3335	3835	4929	4162	3099	1869	1330	1255	1194
MAX (WY)	5938	7518	8050	9737	7916	11370	8463	7142	5805	4143	4772	5400
MIN (WY)	1955	1986	1973	1937	1939	1936	1993	1996	1941	1985	1956	1971
MIN (WY)	139	84.5	295	465	630	1189	1321	662	504	279	155	146
(WY)	1931	1931	1999	1925	1934	1990	1925	1926	1925	1930	1930	1925

SUMMARY STATISTICS FOR 1998 CALENDAR YEAR FOR 1999 WATER YEAR WATER YEARS 1925 - 1999

ANNUAL TOTAL	888827	654290	
ANNUAL MEAN	2435 † -103	1793 † -18	2609
HIGHEST ANNUAL MEAN			3944 1996
LOWEST ANNUAL MEAN			1223 1925
HIGHEST DAILY MEAN	15300 Apr 10	18400 Apr 10	58100 Mar 18 1936
LOWEST DAILY MEAN	237 Dec 16	e220 Jan 2	39 Nov 16 1930
ANNUAL SEVEN-DAY MINIMUM	248 Dec 1	248 Dec 1	62 Nov 14 1930
INSTANTANEOUS PEAK FLOW		24600 Apr 10	a103000 Oct 16 1954
INSTANTANEOUS PEAK STAGE		11.41 Apr 10	21.96 Oct 16 1954
ANNUAL RUNOFF (CFSM)	1.84	1.35	1.97
ANNUAL RUNOFF (INCHES)	24.94	18.36	26.73
10 PERCENT EXCEEDS	5840	4940	5810
50 PERCENT EXCEEDS	1200	710	1630
90 PERCENT EXCEEDS	429	330	592

STATISTICS OF MONTHLY MEAN DATA FOR WATER YEARS 1909 - 1924, BY WATER YEAR (WY) (PRIOR TO REGULATION)

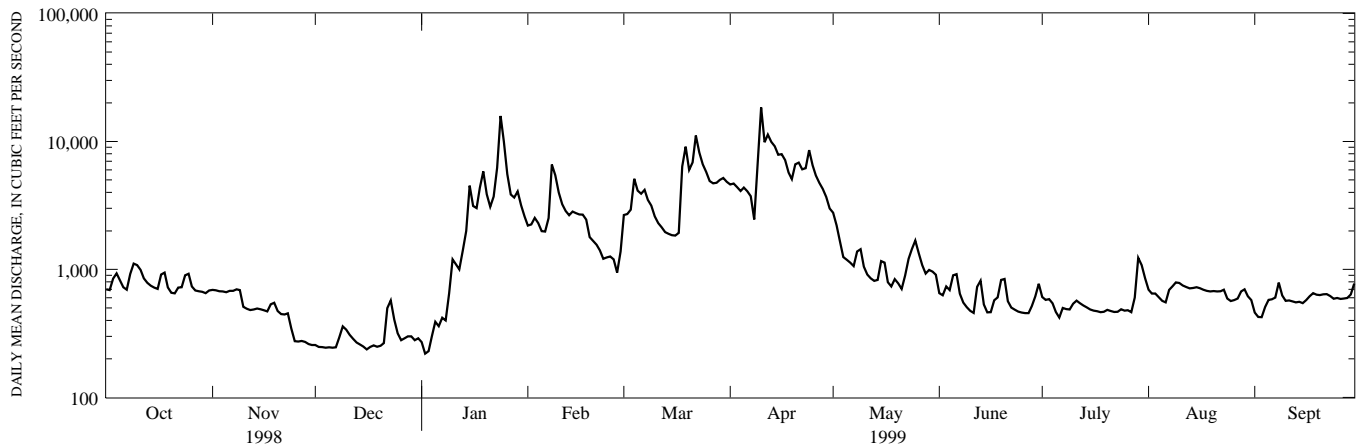
	OCT	NOV	DEC	JAN	FEB	MAR	APR	MAY	JUN	JUL	AUG	SEP
MEAN	1126	1653	2574	4697	4098	5490	3830	2696	2379	1110	764	1100
MAX (WY)	5117	4937	5795	8679	9354	9777	6572	6675	5224	5102	1904	5158
MIN (WY)	1912	1914	1922	1913	1918	1912	1914	1924	1910	1912	1912	1911
MIN (WY)	36.4	68.4	342	503	1589	1913	1335	1125	938	221	99.5	132
(WY)	1909	1909	1909	1918	1924	1915	1921	1911	1922	1918	1910	1922

SUMMARY STATISTICS WATER YEARS 1909 - 1924

ANNUAL MEAN	2620
HIGHEST ANNUAL MEAN	3976 1912
LOWEST ANNUAL MEAN	1879 1923
HIGHEST DAILY MEAN	59200 Mar 21 1912
LOWEST DAILY MEAN	11 Oct 18 1910
ANNUAL SEVEN-DAY MINIMUM	14 Oct 15 1910
INSTANTANEOUS PEAK FLOW	b65900 Mar 29 1924
INSTANTANEOUS PEAK STAGE	c20.5 Mar 29 1924
INSTANTANEOUS LOW FLOW	11 dSep 23 1908
ANNUAL RUNOFF (CFSM)	1.98
ANNUAL RUNOFF (INCHES)	26.84
10 PERCENT EXCEEDS	6200
50 PERCENT EXCEEDS	1370
90 PERCENT EXCEEDS	195

† Change in contents, equivalent in cubic feet per second, in Deep Creek Reservoir and Youghiogheny River Lake. Records of contents in Deep Creek Reservoir furnished by Sithe Northeast. Records of contents in Youghiogheny River Lake furnished by U.S. Army Corps of Engineers.

- a From rating curve extended above 55,000 ft³/s.
- b Estimated from hydrograph.
- c From graph based on gage readings.
- d Also Sept. 26, 27, 1908 and Oct. 18, 1910.
- e Estimated.



1-YEAR HYDROGRAPH
OCTOBER 1, 1998 TO SEPTEMBER 30, 1999