

BEAVER RIVER BASIN

03106500 SLIPPERY ROCK CREEK AT WURTEMBERG, PA

LOCATION.--Lat 40°53'02", long 80°14'02", Lawrence County, Hydrologic Unit 05030105, on left bank at downstream side of highway bridge at Camp Allegheny, 2 mi north of Wurtemburg, and 2.8 mi upstream from mouth.

DRAINAGE AREA.--398 mi².

PERIOD OF RECORD.--October 1911 to current year. Monthly discharge only for some periods, published in WSP 1305.

REVISED RECORDS.--WSP 743: Drainage area. WSP 1305: 1914-18, 1920-22, 1923-24 (M), 1925-28, 1930. WSP 1385: 1932, 1935, 1936 (M), 1937-39. WSP 1625: 1955.

GAGE.--Water-stage recorder. Datum of gage is 832.06 ft above sea level. Jan. 1, 1912 to Sept. 30, 1922, nonrecording gage at site 1.5 mi downstream at datum 13.77 ft lower and Oct. 1, 1922 to Sept. 30, 1940, nonrecording gage at site 2 mi downstream at datum 18.92 ft lower.

REMARKS.--Records good except those for estimated daily discharges, which are poor. Some regulation since May 1969 by Lake Arthur (station 03106280) 13 mi upstream. Several measurements of water temperature were made during the year. U.S. Army Corps of Engineers satellite telemetry at station.

PEAK DISCHARGES FOR CURRENT YEAR.--Peak discharges greater than a base discharge of 3,500 ft³/s and maximum (*):

Date	Time	Discharge ft ³ /s	Gage Height (ft)	Date	Time	Discharge ft ³ /s	Gage Height (ft)
Jan. 24	1200	*5,550	*6.40	No other peak greater than base discharge.			

DISCHARGE, CUBIC FEET PER SECOND, WATER YEAR OCTOBER 1998 TO SEPTEMBER 1999
DAILY MEAN VALUES

DAY	OCT	NOV	DEC	JAN	FEB	MAR	APR	MAY	JUN	JUL	AUG	SEP
1	76	e180	159	e195	746	1480	241	445	195	104	118	65
2	69	e130	232	e185	1500	1010	279	421	191	407	127	61
3	69	e115	e300	e320	1910	949	283	378	196	313	108	56
4	81	e105	e350	e370	1550	1450	331	367	185	195	81	54
5	89	e100	e325	e400	1220	1050	758	355	166	137	68	53
6	89	e98	e300	e350	1000	944	703	349	148	113	65	53
7	84	e98	e280	e370	900	910	477	349	140	101	61	52
8	887	e100	e270	e400	1480	687	382	349	134	93	71	52
9	825	e105	e260	e430	1270	607	879	375	122	86	79	52
10	325	e110	e250	e470	992	519	2280	375	116	95	68	52
11	169	145	244	e520	852	446	1940	341	107	96	64	52
12	132	207	242	e600	807	427	2070	308	104	93	60	51
13	e115	142	240	e900	923	416	1580	292	95	82	61	49
14	e105	120	239	e1300	809	406	1020	297	92	76	101	49
15	e98	108	239	e1800	724	402	773	262	101	71	308	48
16	e92	98	239	e2000	758	426	739	248	110	67	228	48
17	e90	93	239	e1700	766	645	1020	235	97	63	108	48
18	e96	89	239	e1900	757	1380	1020	235	90	60	81	48
19	e108	87	240	e1750	648	1160	833	725	85	58	70	48
20	e128	89	249	e1600	499	754	884	616	84	58	65	48
21	e135	101	318	e1500	438	589	846	361	81	55	64	48
22	e140	104	1680	e1450	369	513	967	308	78	62	65	48
23	e135	103	1340	4000	259	462	1160	266	74	65	64	49
24	e130	97	626	5450	262	423	1500	519	72	71	59	49
25	e120	93	375	4150	245	378	1050	1070	71	78	59	49
26	e115	128	e300	2160	249	340	832	756	70	75	110	49
27	e110	147	e270	1460	256	314	747	467	76	64	359	48
28	e130	211	e250	1390	718	295	661	333	115	118	211	47
29	e150	260	e230	1390	---	281	529	277	127	299	116	53
30	e185	233	e220	1080	---	261	466	240	112	250	88	112
31	e195	---	e210	854	---	243	---	212	---	125	72	---
TOTAL	5272	3796	10955	42444	22907	20167	27250	12131	3434	3630	3259	1591
MEAN	170	127	353	1369	818	651	908	391	114	117	105	53.0
MAX	887	260	1680	5450	1910	1480	2280	1070	196	407	359	112
MIN	69	87	159	185	245	243	241	212	70	55	59	47
CFSM	.43	.32	.89	3.44	2.06	1.63	2.28	.98	.29	.29	.26	.13
IN.	.49	.35	1.02	3.97	2.14	1.88	2.55	1.13	.32	.34	.30	.15

e Estimated.

BEAVER RIVER BASIN

03106500 SLIPPERY ROCK CREEK AT WURTEMBERG, PA--Continued

STATISTICS OF MONTHLY MEAN DATA FOR WATER YEARS 1969 - 1999, BY WATER YEAR (WY) (SINCE REGULATION)

	OCT	NOV	DEC	JAN	FEB	MAR	APR	MAY	JUN	JUL	AUG	SEP
MEAN	278	566	811	708	889	1072	956	635	525	342	270	248
MAX (WY)	1976	1986	1978	1999	1981	1972	1987	1983	1989	1990	1980	1975
MIN (WY)	1992	1992	1990	1977	1987	1969	1971	1976	1992	1998	1991	1999

SUMMARY STATISTICS FOR 1998 CALENDAR YEAR FOR 1999 WATER YEAR WATER YEARS 1969 - 1999

ANNUAL TOTAL	177262	156836	
ANNUAL MEAN	486	430	607
HIGHEST ANNUAL MEAN			813
LOWEST ANNUAL MEAN			406
HIGHEST DAILY MEAN	6540	Jan 9	5450
LOWEST DAILY MEAN	57	Aug 8,9	47
ANNUAL SEVEN-DAY MINIMUM	59	Aug 3	48
INSTANTANEOUS PEAK FLOW			5550
INSTANTANEOUS PEAK STAGE			6.40
INSTANTANEOUS LOW FLOW			46
ANNUAL RUNOFF (CFSM)	1.22	1.08	1.52
ANNUAL RUNOFF (INCHES)	16.57	14.66	20.71
10 PERCENT EXCEEDS	1180	1060	1380
50 PERCENT EXCEEDS	217	235	371
90 PERCENT EXCEEDS	66	61	96

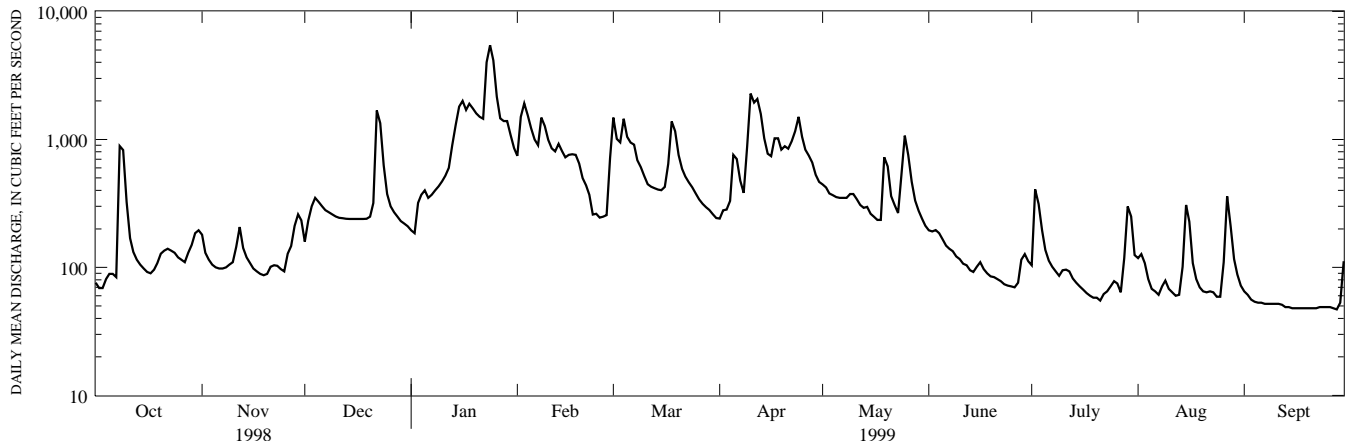
STATISTICS OF MONTHLY MEAN DATA FOR WATER YEARS 1912 - 1968, BY WATER YEAR (WY) (PRIOR TO REGULATION)

	OCT	NOV	DEC	JAN	FEB	MAR	APR	MAY	JUN	JUL	AUG	SEP
MEAN	237	379	589	839	856	1203	911	653	386	237	191	160
MAX (WY)	1912	1922	1928	1937	1956	1913	1940	1924	1956	1958	1956	1926
MIN (WY)	1964	1931	1931	1931	1934	1931	1925	1934	1936	1944	1930	1944

SUMMARY STATISTICS WATER YEARS 1912 - 1968

ANNUAL MEAN	552
HIGHEST ANNUAL MEAN	917
LOWEST ANNUAL MEAN	216
HIGHEST DAILY MEAN	16700
LOWEST DAILY MEAN	20
ANNUAL SEVEN-DAY MINIMUM	24
INSTANTANEOUS PEAK FLOW	a19000
INSTANTANEOUS PEAK STAGE	b12.05
INSTANTANEOUS LOW FLOW	c16
ANNUAL RUNOFF (CFSM)	1.39
ANNUAL RUNOFF (INCHES)	18.85
10 PERCENT EXCEEDS	1390
50 PERCENT EXCEEDS	248
90 PERCENT EXCEEDS	58

- a From rating curve extended above 14,000 ft³/s.
- b From floodmark, site and datum then in use.
- c Minimum observed.



1-YEAR HYDROGRAPH
OCTOBER 1, 1998 TO SEPTEMBER 30, 1999