

**ANALYSIS OF STREAMFLOW SAMPLES COLLECTED AT SPECIAL-STUDY SITES
ALLEGHENY AND MONONGAHELA RIVER BASIN NAWQA PROJECT**

SYNOPTIC SURVEY OF STREAMS IN THE COAL FIELDS OF THE ALLEGHENY AND MONONGAHELA RIVER BASINS

A low flow surface-water synoptic survey was completed throughout the Allegheny and Monongahela River Basins on August 13-21, 1998. Of the 121 sites sampled, 119 of the sites were previously sampled in 1979-81 as part of the Coal Area Hydrology Network established by the USGS in cooperation with the Office of Surface Mining (OSM). This Network was established to acquire and disseminate hydrologic information for the major coal areas of the Nation to aid mining companies and regulatory authorities in preparing and assessing permits. These data collected in 1998 will be compared to data collected in 1979-81 to assess water-quality changes that have occurred. Eighty-nine of the sites sampled were standard sites and 32 sites were intensive sites. Laboratory analyses for the standard sites (schedule 1065) included pH, specific conductance, sulfate, chloride, and total and dissolved iron, manganese, and aluminum. Laboratory analyses for the intensive sites included the standard site analyses plus calcium, magnesium, sodium, potassium, silica, fluoride and dissolved solids. Field determinations for all sites included water discharge, pH, specific conductance, water temperature, and alkalinity. Also, chilled samples were sent to the USGS Ocala Service Unit for heated acidity determinations for all sites. Results of the heated acidity determinations, which were omitted from the 1998 annual data report, are listed in the following table. Quality control included 16 replicate samples taken at 16 individual sites.

ANALYSIS OF STREAMFLOW SAMPLES COLLECTED AT SPECIAL-STUDY SITES
 ALLEGHENY AND MONONGAHELA RIVER BASIN NAWQA PROJECT

SYNOPTIC SURVEY OF STREAMS IN THE COAL FIELDS OF THE ALLEGHENY AND MONONGAHELA RIVER BASINS--Continued

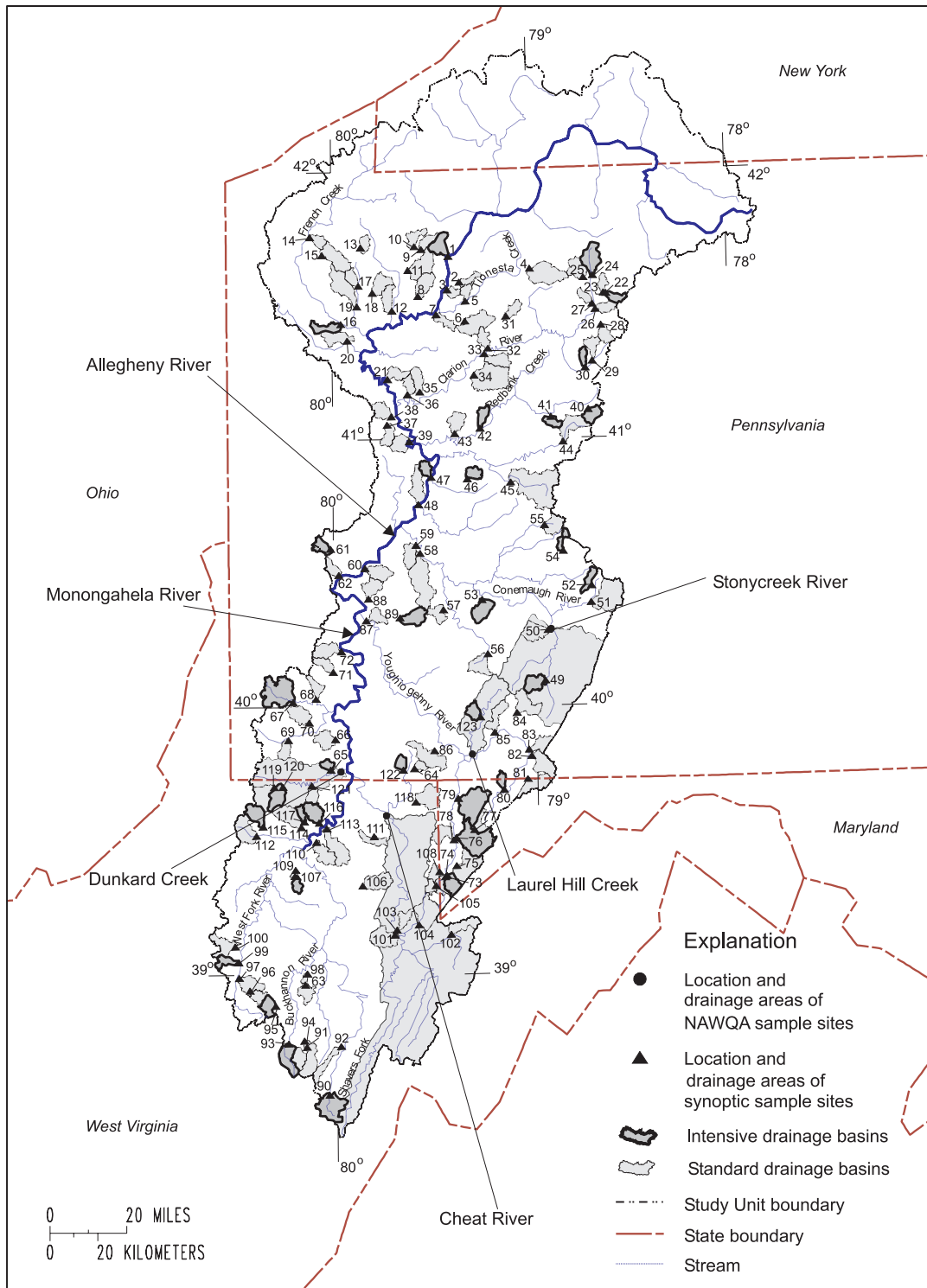


Figure 6.--Location of sites sampled during the synoptic survey of streams in the coal fields of the Allegheny and Monongahela River Basins.

**ANALYSIS OF STREAMFLOW SAMPLES COLLECTED AT SPECIAL-STUDY SITES
ALLEGHENY AND MONONGAHELA RIVER BASIN NAWQA PROJECT**

SYNOPTIC SURVEY OF STREAMS IN THE COAL FIELDS OF THE ALLEGHENY AND MONONGAHELA RIVER BASINS--Continued

WATER QUALITY DATA, WATER YEAR OCTOBER 1997 TO SEPTEMBER 1998

DATE	TIME	DIS- CHARGE, INST. CUBIC FEET PER SECOND (00061)	PH WATER WHOLE FIELD (STAND- ARD UNITS) (00400)	SPE- CIFIC CON- DUCT- ANCE (µS/CM) (00095)	TEMPER- ATURE WATER (DEG C) (00010)	ACIDITY TOTAL HEATED (MG/L AS CAC03) (70508)	ANC WATER UNFLTRD FET FIELD MG/L AS CAC03 (00410)
03015560	TIDIOUTE C AT TIDIOUTE, PA (LAT 41 40 00N LONG 079 24 35W) Site 1						
AUG 1998 19...	0815	1.5	7.6	110	14.5	<5.0	30
03015700	BEAVER RN AT ENDEVOR, PA (LAT 41 35 12N LONG 079 21 17W) Site 2						
AUG 1998 18...	1515	1.9	7.5	72	18.5	<5.0	18
03016005	L HICKORY RN AT WEST HICKORY, PA (LAT 41 33 28N LONG 079 24 56W) Site 3						
AUG 1998 18...	1635	1.4	7.6	100	18.5	<5.0	24
03016805	S BR TIONESTA C AT CHERRY RUN, PA (LAT 41 38 03N LONG 078 59 50W) Site 4						
AUG 1998 17...	1715	16	7.7	90	20.5	<5.0	21
03017820	ROSS RN NR CRYSTAL SPRINGS, PA (LAT 41 30 53N LONG 079 19 30W) Site 5						
AUG 1998 18...	1130	.84	7.4	75	19.0	<5.0	21
03018900	COON C NR NEWMANSVILLE, PA (LAT 41 26 24N LONG 079 19 44W) Site 6						
AUG 1998 18...	0905	3.7	7.5	240	19.5	<5.0	112
03020055	L TIONESTA C AT TIONESTA, PA (LAT 41 27 55N LONG 079 28 25W) Site 7						
AUG 1998 18...	1835	1.6	7.5	88	18.9	<5.0	20
03020250	PITHOLE C NR LOVELL CORNERS, PA (LAT 41 32 05N LONG 079 33 51W) Site 8						
AUG 1998 14...	1915	4.1	7.8	300	20.0	<5.0	64
03020438	CALDWELL C AT GRAND VALLEY, PA (LAT 41 42 36N LONG 079 32 44W) Site 9						
AUG 1998 15...	0945	.04	7.0	120	21.0	5.0	40
03020445	W BR CALDWELL C NR GRAND VALLEY, PA (LAT 41 43 16N LONG 079 34 49W) Site 10						
AUG 1998 15...	1040	1.0	7.6	120	18.5	<5.0	37
03020455	PINE C NR ENTERPRISE, PA (LAT 41 37 56N LONG 079 36 49W) Site 11						
AUG 1998 15...	0830	4.4	7.6	198	19.0	<5.0	54

**ANALYSIS OF STREAMFLOW SAMPLES COLLECTED AT SPECIAL-STUDY SITES
ALLEGHENY AND MONONGAHELA RIVER BASIN NAWQA PROJECT**

SYNOPTIC SURVEY OF STREAMS IN THE COAL FIELDS OF THE ALLEGHENY AND MONONGAHELA RIVER BASINS--Continued

WATER QUALITY DATA, WATER YEAR OCTOBER 1997 TO SEPTEMBER 1998

DATE	TIME	DIS- CHARGE, INST. CUBIC FEET PER SECOND (00061)	PH WATER WHOLE FIELD (STAND- ARD UNITS) (00400)	SPE- CIFIC CON- DUCT- ANCE (μ S/CM) (00095)	TEMPER- ATURE WATER (DEG C) (00010)	ACIDITY TOTAL HEATED (MG/L AS CAC03) (70508)	ANC WATER UNFLTRD FET FIELD MG/L AS CAC03 (00410)
03020510	CHERRYTREE RUN NR ROUSEVILLE, PA. (LAT 41 28 51N LONG 079 41 47W) Site 12						
AUG 1998 14...	1745	2.0	8.3	216	22.0	<5.0	58
03021610	E BR MUDDY C NR KOOCHOGEY CORNERS, PA (LAT 41 43 06N LONG 079 51 07W) Site 13						
AUG 1998 15...	1230	.47	8.1	280	18.5	<5.0	132
03022100	GRAVEL RN NR WOODCOCK, PA (LAT 41 45 31N LONG 080 06 34W) Site 14						
AUG 1998 15...	1550	.55	8.2	345	24.0	<5.0	140
03022540	WOODCOCK C AT BLOOMING VALLEY, PA. (LAT 41 41 26N LONG 080 02 54W) Site 15						
AUG 1998 15...	1435	2.0	8.5	270	22.0	<5.0	108
03024003	MILL C AT UTICA, PA (LAT 41 25 58N LONG 079 57 19W) Site 16						
AUG 1998 14...	0940	2.9	8.1	227	17.0	<5.0	84
03024200	WEST BR SUGAR CR NR BRADLEYTOWN, PA. (LAT 41 34 31N LONG 079 51 54W) Site 17						
AUG 1998 14...	1450	.47	9.2	197	26.0	<5.0	86
03024210	PRATHER C NR DEMPSEYTOWN, PA (LAT 41 32 54N LONG 079 47 39W) Site 18						
AUG 1998 14...	1615	1.9	8.0	188	20.5	<5.0	54
03024300	LAKE C AT COOPERSTOWN, PA (LAT 41 29 52N LONG 079 52 22W) Site 19						
AUG 1998 14...	1315	3.2	9.0	218	21.5	<5.0	87
03026100	L SANDY C AT POLK, PA (LAT 41 22 14N LONG 079 55 23W) Site 20						
AUG 1998 14...	0805	5.2	7.8	177	17.0	<5.0	57
03026300	MILL C NR EMLENTON, PA (LAT 41 13 30N LONG 079 43 20W) Site 21						
AUG 1998 13...	1930	1.2	7.9	385	19.0	<5.0	55
03027550	CROOKED CR AT GLEN HAZEL, PA. (LAT 41 32 15N LONG 078 36 49W) Site 22						
AUG 1998 17...	1435	.60	7.5	95	20.0	<5.0	25

**ANALYSIS OF STREAMFLOW SAMPLES COLLECTED AT SPECIAL-STUDY SITES
ALLEGHENY AND MONONGAHELA RIVER BASIN NAWQA PROJECT**

SYNOPTIC SURVEY OF STREAMS IN THE COAL FIELDS OF THE ALLEGHENY AND MONONGAHELA RIVER BASINS--Continued

WATER QUALITY DATA, WATER YEAR OCTOBER 1997 TO SEPTEMBER 1998

DATE	TIME	DIS- CHARGE, INST. CUBIC FEET PER SECOND (00061)	PH WATER WHOLE FIELD (STAND- ARD UNITS) (00400)	SPE- CIFIC CON- DUCT- ANCE (μ S/CM) (00095)	TEMPER- ATURE WATER (DEG C) (00010)	ACIDITY TOTAL HEATED (MG/L AS CAC03) (70508)	ANC WATER UNFLTRD FET FIELD MG/L AS CAC03 (00410)
03027610	JOHNSON RUN AT KETNER, PA. (LAT 41 32 23N LONG 078 37 34W) Site 23						
AUG 1998 17...	1300	2.7	5.3	285	19.5	5.0	3
03027830	W BR CLARION R NR WILCOX, PA (LAT 41 36 20N LONG 078 40 45W) Site 24						
AUG 1998 17...	1145	30	7.4	80	17.5	<5.0	19
03027990	WILSON RN AT DAHOGA, PA (LAT 41 35 56N LONG 078 43 35W) Site 25						
AUG 1998 17...	1045	12	7.5	85	16.5	<5.0	19
03028520	POWERS RN AT JOHNSONBURG, PA (LAT 41 28 45N LONG 078 40 12W) Site 26						
AUG 1998 17...	1645	1.4	7.6	107	20.0	<5.0	21
03028595	SILVER C AT WILCOX, PA (LAT 41 29 57N LONG 078 41 03W) Site 27						
AUG 1998 17...	1540	.56	8.5	140	21.5	<5.0	42
03028800	DAGUSCAHONDA CR AT DAGUSCAHONDA, PA. (LAT 41 25 09N LONG 078 38 32W) Site 28						
AUG 1998 18...	1040	2.3	4.4	405	7.0	20	0
03029140	BRANDY CAMP CREEK AT ELBON, PA (LAT 41 17 10N LONG 078 41 22W) Site 29						
AUG 1998 18...	0920	5.6	4.8	710	17.0	15	2
03029144	MEAD RUN AT BROCKPORT, PA. (LAT 41 15 38N LONG 078 43 33W) Site 30						
AUG 1998 18...	0815	1.6	7.5	503	19.0	<5.0	44
03029193	W BR MILLSTONE C AT MARIENVILLE, PA (LAT 41 27 25N LONG 079 07 13W) Site 31						
AUG 1998 17...	1540	.89	7.5	250	21.0	<5.0	89
03029400	TOMS RUN AT COOKSBURG, PA. (LAT 41 20 16N LONG 079 12 50W) Site 32						
AUG 1998 17...	1340	1.0	7.4	145	19.0	<5.0	22
03029510	CATHERS RUN AT MOUTH, PA. (LAT 41 19 00N LONG 079 13 59W) Site 33						
AUG 1998 17...	1130	2.7	8.0	135	20.5	<5.0	55

**ANALYSIS OF STREAMFLOW SAMPLES COLLECTED AT SPECIAL-STUDY SITES
ALLEGHENY AND MONONGAHELA RIVER BASIN NAWQA PROJECT**

SYNOPTIC SURVEY OF STREAMS IN THE COAL FIELDS OF THE ALLEGHENY AND MONONGAHELA RIVER BASINS--Continued

WATER QUALITY DATA, WATER YEAR OCTOBER 1997 TO SEPTEMBER 1998

DATE	TIME	DIS- CHARGE, INST. CUBIC FEET PER SECOND (00061)	PH WATER WHOLE FIELD (STAND- ARD UNITS) (00400)	SPE- CIFIC CON- DUCT- ANCE (μ S/CM) (00095)	TEMPER- ATURE WATER (DEG C) (00010)	ACIDITY TOTAL HEATED (MG/L AS CAC03) (70508)	ANC WATER UNFLTRD FET FIELD MG/L AS CAC03 (00410)
03029700	MILL CREEK NR STRATTANVILLE, PA. (LAT 41 14 15N LONG 079 17 11W) Site 34						
AUG 1998 17...	0940	8.2	3.3	1120	21.0	70	0
03030803	BEAVER C BELOW BLAIRS CORNERS, PA (LAT 41 10 38N LONG 079 33 37W) Site 35						
AUG 1998 13...	1750	1.3	8.4	380	23.0	<5.0	54
03030948	TURKEY RN AT ALUM ROCK, PA (LAT 41 10 02N LONG 079 37 18W) Site 36						
AUG 1998 13...	1610	.66	8.1	705	24.0	<5.0	95
03031508	S BR BEAR C AT BRUIN, PA (LAT 41 03 17N LONG 079 43 34W) Site 37						
AUG 1998 13...	1040	1.4	7.2	1800	18.0	5.0	108
03031510	N BR BEAR C AT PARKER, PA (LAT 41 05 08N LONG 079 42 17W) Site 38						
AUG 1998 13...	1435	3.7	4.3	515	19.0	25	0
03031540	SUGAR C AT EAST BRADY, PA (LAT 40 59 30N LONG 079 37 01W) Site 39						
AUG 1998 13...	0810	1.7	8.0	865	17.5	<5.0	115
03031620	LABORDE BRANCH NR HOMECAMP, PA. (LAT 41 06 18N LONG 078 42 52W) Site 40						
AUG 1998 14...	1430	1.7	7.5	960	21.0	<5.0	46
03031720	TROUT RUN NR REYNOLDSVILLE, PA. (LAT 41 04 43N LONG 078 54 07W) Site 41						
AUG 1998 14...	1100	.69	8.0	528	18.0	<5.0	98
03032025	PINE C AT MAYPORT, PA (LAT 41 02 20N LONG 079 15 34W) Site 42						
AUG 1998 14...	1630	.70	8.3	860	21.5	<5.0	98
03032400	LEATHERWOOD CREEK NEAR NEW BETHLEHEM, PA. (LAT 41 01 12N LONG 079 23 14W) Site 43						
AUG 1998 14...	1815	2.4	8.7	1360	23.0	<5.0	67
03033218	STUMP C NR BIG CREEK, PA (LAT 40 59 07N LONG 078 50 37W) Site 44						
AUG 1998 14...	0910	5.6	7.8	652	18.0	<5.0	101

**ANALYSIS OF STREAMFLOW SAMPLES COLLECTED AT SPECIAL-STUDY SITES
ALLEGHENY AND MONONGAHELA RIVER BASIN NAWQA PROJECT**

SYNOPTIC SURVEY OF STREAMS IN THE COAL FIELDS OF THE ALLEGHENY AND MONONGAHELA RIVER BASINS--Continued

WATER QUALITY DATA, WATER YEAR OCTOBER 1997 TO SEPTEMBER 1998

DATE	TIME	DIS- CHARGE, INST. CUBIC FEET PER SECOND (00061)	PH WATER WHOLE FIELD (STAND- ARD UNITS) (00400)	SPE- CIFIC CON- DUCT- ANCE (µS/CM) (00095)	TEMPER- ATURE WATER (DEG C) (00010)	ACIDITY TOTAL HEATED (MG/L AS CAC03) (70508)	ANC WATER UNFLTRD FET FIELD MG/L AS CAC03 (00410)
03034500	LITTLE MAHONING CREEK AT MCCORMICK, PA. (LAT 40 50 10N LONG 079 06 37W) Site 45						
AUG 1998 15...	0750	7.1	7.8	463	20.5	<5.0	53
03036220	N BR S FK PINE C AT ECHO, PA (LAT 40 51 01N LONG 079 19 41W) Site 46						
AUG 1998 15...	0930	.33	7.7	438	19.5	<5.0	70
03036320	LIMESTONE RN AT TARRTOWN, PA (LAT 40 51 27N LONG 079 30 32W) Site 47						
AUG 1998 15...	1115	2.2	8.2	926	20.0	<5.0	85
03036600	GLADE RN AT CADOGAN, PA (LAT 40 45 24N LONG 079 34 25W) Site 48						
AUG 1998 13...	0835	2.7	7.2	910	17.5	5.0	88
03039340	BEAVERDAM C AT STOYSTOWN, PA (LAT 40 05 35N LONG 078 57 16W) Site 49						
AUG 1998 13...	1640	2.4	8.4	378	21.5	<5.0	86
03039957	BENS C AT FERNDAL, PA (LAT 40 16 58N LONG 078 56 10W) Site 50						
AUG 1998 13...	1230	11	8.4	468	19.5	<5.0	62
03040100	L CONEMAUGH RIVER AT WILMORE, PA (LAT 40 23 02N LONG 078 43 11W) Site 51						
AUG 1998 13...	1040	17	4.4	913	15.5	35	0
03040110	HOWELLS RUN NEAR EBENSBURG, PA (LAT 40 26 46N LONG 078 42 56W) Site 52						
AUG 1998 13...	0845	1.7	8.0	715	16.5	<5.0	79
03041700	MCGEE RN AT BRENIZER, PA (LAT 40 23 53N LONG 079 15 43W) Site 53						
AUG 1998 13...	1640	6.4	7.5	250	23.0	<5.0	59
03042040	S BR TWO LICK C NR WANDIN JUNCTION, PA. SITE 14 (LAT 40 40 29N LONG 078 56 41W) Site 55						
AUG 1998 13...	1915	6.5	8.9	1000	20.0	<5.0	351
03044800	LOYALHANNA C AT RECTOR, PA (LAT 40 11 42N LONG 079 14 15W) Site 56						
AUG 1998 13...	1440	2.3	8.0	174	23.0	<5.0	35

**ANALYSIS OF STREAMFLOW SAMPLES COLLECTED AT SPECIAL-STUDY SITES
ALLEGHENY AND MONONGAHELA RIVER BASIN NAWQA PROJECT**

SYNOPTIC SURVEY OF STREAMS IN THE COAL FIELDS OF THE ALLEGHENY AND MONONGAHELA RIVER BASINS--Continued

WATER QUALITY DATA, WATER YEAR OCTOBER 1997 TO SEPTEMBER 1998

DATE	TIME	DIS- CHARGE, INST. CUBIC FEET PER SECOND (00061)	PH WATER WHOLE FIELD (STAND- ARD UNITS) (00400)	SPE- CIFIC CON- DUCT- ANCE (μ S/CM) (00095)	TEMPER- ATURE WATER (DEG C) (00010)	ACIDITY TOTAL HEATED (MG/L AS CAC03) (70508)	ANC WATER UNFLTRD FET FIELD MG/L AS CAC03 (00410)	
03045480		CRABTREE C AT CRABTREE, PA (LAT 40 21 43N LONG 079 27 18W) Site 57						
AUG 1998	13...	1445	7.8	6.6	1560	17.0	80	134
03048400		BEAVER RN AT PAULTON, PA (LAT 40 34 26N LONG 079 34 06W) Site 58						
AUG 1998	13...	1300	14	8.3	333	21.0	<5.0	28
03048550		PINE RN AT WEST VANDERGRIFT, PA (LAT 40 36 15N LONG 079 35 18W) Site 59						
AUG 1998	13...	1110	2.7	7.1	620	20.0	5.0	64
03049660		PLUM C AT VERONA, PA (LAT 40 31 10N LONG 079 50 37W) Site 60						
AUG 1998	18...	1135	2.5	8.1	1130	23.0	<5.0	108
03049740		PINE C NR INGOMAR, PA (LAT 40 35 32N LONG 080 00 53W) Site 61						
AUG 1998	13...	1645	1.0	8.1	730	22.0	<5.0	90
03049818		GIRTYS RUN AT MILLVALE, PA (LAT 40 29 41N LONG 079 58 30W) Site 62						
AUG 1998	18...	0825	.76	8.2	--	21.5	<5.0	122
03052500		SAND RUN NEAR BUCKHANNON, WV (LAT 38 57 50N LONG 080 09 10W) Site 63						
AUG 1998	21...	1215	10	7.3	134	18.5	<5.0	16
03070455		STONY FORK NEAR ELLIOTTSVILLE, PA (51) (LAT 39 46 08N LONG 079 36 34W) Site 64						
AUG 1998	18...	1220	2.7	7.6	258	20.0	<5.0	29
03071920		MEADOW RUN AT DAVISTOWN, PA (LAT 39 45 59N LONG 080 01 15W) Site 65						
AUG 1998	14...	1830	.14	8.2	550	21.5	<5.0	--
03072777		MUDDY CREEK NEAR CARMICHAELS, PA (LAT 39 52 50N LONG 079 59 51W) Site 66						
AUG 1998	15...	1220	.34	7.9	503	21.0	<5.0	210
03072815		TENMILE CREEK NEAR AMITY, PA (LAT 40 01 11N LONG 080 12 20W) Site 67						
AUG 1998	13...	1150	2.7	8.2	382	22.0	<5.0	140

**ANALYSIS OF STREAMFLOW SAMPLES COLLECTED AT SPECIAL-STUDY SITES
ALLEGHENY AND MONONGAHELA RIVER BASIN NAWQA PROJECT**

SYNOPTIC SURVEY OF STREAMS IN THE COAL FIELDS OF THE ALLEGHENY AND MONONGAHELA RIVER BASINS--Continued

WATER QUALITY DATA, WATER YEAR OCTOBER 1997 TO SEPTEMBER 1998

DATE	TIME	DIS- CHARGE, INST. CUBIC FEET PER SECOND (00061)	PH WATER WHOLE FIELD (STAND- ARD UNITS) (00400)	SPE- CIFIC CON- DUCT- ANCE (μ S/CM) (00095)	TEMPER- ATURE WATER (DEG C) (00010)	ACIDITY TOTAL HEATED (MG/L AS CAC03) (70508)	ANC WATER UNFLTRD FET FIELD MG/L AS CAC03 (00410)
03072820	DANIELS RUN AT WEST ZOLLARVILLE, PA (LAT 40 01 51N LONG 080 05 32W) Site 68						
AUG 1998 13...	0830	.49	8.1	564	16.5	<5.0	224
03072865	PURSLEY CREEK NEAR WAYNESBURG, PA (LAT 39 52 40N LONG 080 13 46W) Site 69						
AUG 1998 13...	1635	.34	8.1	509	27.5	<5.0	182
03072975	RUFF CREEK NEAR MATHER, PA (LAT 39 56 35N LONG 080 07 33W) Site 70						
AUG 1998 13...	1430	.97	8.2	473	21.5	<5.0	168
03075035	N BR PIGEON C AT BENTLYVILLE, PA (LAT 40 07 54N LONG 080 00 19W) Site 71						
AUG 1998 13...	0910	.54	8.1	990	19.0	<5.0	232
03075058	MINGO C AT RIVER VIEW, PA (LAT 40 12 31N LONG 079 57 53W) Site 72						
AUG 1998 13...	1105	1.3	8.0	1690	19.0	<5.0	210
03075340	YOUGHIOGHENY R AT UNDERWOOD RD NR CRELLIN, MD (LAT 39 21 50N LONG 079 27 45W) Site 73						
AUG 1998 14...	1640	9.7	7.7	118	20.5	<5.0	31
03075350	CHERRY CREEK NEAR CRELLIN, MD (LAT 39 22 06N LONG 079 27 16W) Site 74						
AUG 1998 14...	1550	2.8	7.4	145	20.5	<5.0	33
03075495	L YOUGHIOGHENY R AT 3RD ST AT OAKLAND, MD (LAT 39 24 19N LONG 079 24 23W) Site 75						
AUG 1998 14...	1440	11	7.5	166	21.5	<5.0	37
03075700	MUDDY CREEK AT SWALLOW FALLS STATE PARK, MD (LAT 39 30 05N LONG 079 25 08W) Site 76						
AUG 1998 15...	1550	19	7.1	49	20.0	<5.0	10
03075900	CHERRY CREEK NEAR MCHENRY, MD (LAT 39 32 20N LONG 079 18 55W) Site 77						
AUG 1998 14...	1320	2.6	6.5	173	19.0	<5.0	5
03076010	DEEP CREEK LAKE OUTFLOW, MD (LAT 39 30 32N LONG 079 24 20W) Site 78						
AUG 1998 15...	1720	1.4	7.9	588	21.5	<5.0	143

**ANALYSIS OF STREAMFLOW SAMPLES COLLECTED AT SPECIAL-STUDY SITES
ALLEGHENY AND MONONGAHELA RIVER BASIN NAWQA PROJECT**

SYNOPTIC SURVEY OF STREAMS IN THE COAL FIELDS OF THE ALLEGHENY AND MONONGAHELA RIVER BASINS--Continued

WATER QUALITY DATA, WATER YEAR OCTOBER 1997 TO SEPTEMBER 1998

DATE	TIME	DIS- CHARGE, INST. CUBIC FEET PER SECOND (00061)	PH WATER WHOLE FIELD (STAND- ARD UNITS) (00400)	SPE- CIFIC CON- DUCT- ANCE (μ S/CM) (00095)	TEMPER- ATURE WATER (DEG C) (00010)	ACIDITY TOTAL HEATED (MG/L AS CAC03) (70508)	ANC WATER UNFLTRD FET FIELD MG/L AS CAC03 (00410)	
03076600		BEAR CREEK AT FRIENDSVILLE, MD (LAT 39 39 22N LONG 079 23 41W) Site 79						
AUG 1998 15...	1930	21	7.6	134	19.0	<5.0	28	
03077975		BIG SHADE RUN AT GRANTSVILLE, MD (LAT 39 41 12N LONG 079 10 03W) Site 80						
AUG 1998 14...	1115	.88	8.0	343	18.0	<5.0	51	
03078500		BIG PINEY RN NR SALISBURY, PA (LAT 39 43 34N LONG 079 02 55W) Site 81						
AUG 1998 14...	1000	2.3	7.5	2320	18.5	<5.0	25	
03078648		FLAUGHERTY C AT MEYERSDALE, PA (LAT 39 48 45N LONG 079 01 41W) Site 82						
AUG 1998 14...	0845	3.7	8.4	1550	19.0	<5.0	34	
03078710		BLUE LICK C NR MEYERSDALE, PA (LAT 39 50 10N LONG 079 02 27W) Site 83						
AUG 1998 14...	0730	2.6	8.0	1320	18.5	<5.0	88	
03078785		E BR COXES C NR SOMERSET, PA (LAT 39 58 25N LONG 079 05 54W) Site 84						
AUG 1998 13...	1945	5.3	8.2	812	21.5	<5.0	98	
03078900		MIDDLE C NR CASSELMAN, PA (LAT 39 54 04N LONG 079 12 32W) Site 85						
AUG 1998 13...	1820	1.6	8.3	265	23.0	<5.0	52	
03081650		MEADOW RN NR FARMINGTON, PA (LAT 39 50 07N LONG 079 30 30W) Site 86						
AUG 1998 18...	1120	13	7.9	158	20.0	<5.0	25	
03083805		LONG RN AT VERSAILLES, PA (LAT 40 19 25N LONG 079 50 20W) Site 87						
AUG 1998 13...	1315	2.5	7.9	790	21.0	<5.0	123	
03084800		THOMPSON RN AT TURTLE CREEK (LAT 40 24 19N LONG 079 49 41W) Site 88						
AUG 1998 18...	1400	6.6	8.4	1090	24.5	<5.0	63	
03084900		BRUSH C AT WESTMORELAND CITY, PA (LAT 40 20 02N LONG 079 40 18W) Site 89						
AUG 1998 13...	1500	8.2	8.5	505	23.0	<5.0	76	

**ANALYSIS OF STREAMFLOW SAMPLES COLLECTED AT SPECIAL-STUDY SITES
ALLEGHENY AND MONONGAHELA RIVER BASIN NAWQA PROJECT**

SYNOPTIC SURVEY OF STREAMS IN THE COAL FIELDS OF THE ALLEGHENY AND MONONGAHELA RIVER BASINS--Continued

WATER QUALITY DATA, WATER YEAR OCTOBER 1997 TO SEPTEMBER 1998

DATE	TIME	DIS- CHARGE, INST. CUBIC FEET PER SECOND (00061)	PH WATER WHOLE FIELD (STAND- ARD UNITS) (00400)	SPE- CIFIC CON- DUCT- ANCE (µS/CM) (00095)	TEMPER- ATURE WATER (DEG C) (00010)	ACIDITY TOTAL HEATED (MG/L AS CAC03) (70508)	ANC WATER UNFLTRD FET FIELD MG/L AS CAC03 (00410)
383309080021539 C01.0TYGART VLY R @ HWY 15 BR @ VALLEY HEAD WV (LAT 38 33 09N LONG 080 02 15W) Site 90							
AUG 1998							
21...	0820	13	8.0	130	16.0	<5.0	66
384352080084839 C13.0L F R F BUCKHANNON R @ HWY 46 BR @ CZAR WV (LAT 38 43 52N LONG 080 08 48W) Site 91							
AUG 1998							
20...	1930	13	7.6	102	19.0	<5.0	30
384401079584939 C03.0MILL CR @ HWY 46 BR @ MILL CREEK WV (LAT 38 44 01N LONG 079 58 49W) Site 92							
AUG 1998							
21...	0950	22	7.3	36	15.0	<5.0	14
384440080140939 C12.0R F BUCKHANNON R @ HWY 48 BR @ NEWLONTON WV (LAT 38 44 40N LONG 080 14 09W) Site 93							
AUG 1998							
20...	2025	75	7.0	41	18.0	<5.0	9
384517080093039 C14.0L F BUCKHANNON R @ HWY 9 BR @ PALACE VLY WV (LAT 38 45 17N LONG 080 09 30W) Site 94							
AUG 1998							
20...	1840	54	6.9	37	18.0	<5.0	6
385307080175339 C16.0FRENCH CR @ HWY 20 BR @ FRENCH CREEK WV (LAT 38 53 07N LONG 080 17 53W) Site 95							
AUG 1998							
14...	1140	3.1	7.1	90	21.0	<5.0	27
390020080083539 C19.0SAND RUN @ HWY 3/2 BR NR MOUTH WV (LAT 39 00 20N LONG 080 08 35W) Site 98							
AUG 1998							
14...	0910	9.6	7.8	185	20.0	<5.0	22
390253080283839 D07.0POLK CR @ HWY 33 BR @ WESTON WV (LAT 39 02 53N LONG 080 28 38W) Site 99							
AUG 1998							
21...	0930	4.2	7.6	241	20.0	<5.0	75
390627080294039 D08.0FREEMANS CR @ BR @ VALLEY CHAPEL WV (LAT 39 06 27N LONG 080 29 40W) Site 100							
AUG 1998							
20...	1710	3.6	8.1	328	25.0	<5.0	93
390853079424839 F12.0CLOVER RUN @ HWY 21 BR @ ST. GEORGE WV (LAT 39 08 53N LONG 079 42 48W) Site 101							
AUG 1998							
15...	1150	6.7	7.3	66	19.0	<5.0	18
390856079261839 F08.0BEAVER CR @ HWY 93 BR NR DAVIS WV (LAT 39 08 56N LONG 079 26 18W) Site 102							
AUG 1998							
15...	0820	15	4.7	238	19.0	10	1

**ANALYSIS OF STREAMFLOW SAMPLES COLLECTED AT SPECIAL-STUDY SITES
ALLEGHENY AND MONONGAHELA RIVER BASIN NAWQA PROJECT**

SYNOPTIC SURVEY OF STREAMS IN THE COAL FIELDS OF THE ALLEGHENY AND MONONGAHELA RIVER BASINS--Continued

WATER QUALITY DATA, WATER YEAR OCTOBER 1997 TO SEPTEMBER 1998

DATE	TIME	DIS- CHARGE, INST. CUBIC FEET PER SECOND (00061)	PH WATER WHOLE FIELD (STAND- ARD UNITS) (00400)	SPE- CIFIC CON- DUCT- ANCE (μ S/CM) (00095)	TEMPER- ATURE WATER (DEG C) (00010)	ACIDITY TOTAL HEATED (MG/L AS CAC03) (70508)	ANC WATER UNFLTRD FET FIELD MG/L AS CAC03 (00410)
391000079421039 F11.0MINEAR RUN @ HWY 5 BR @ ST. GEORGE WV (LAT 39 10 00N LONG 079 42 10W) Site 103							
AUG 1998							
15...	1100	1.6	7.1	49	19.5	<5.0	10
391108079354239 F10.0HORSESHOE RUN @ HWY 9 BR @ LEAD MINE WV (LAT 39 11 08N LONG 079 35 42W) Site 104							
AUG 1998							
15...	0950	11	7.4	66	19.0	<5.0	19
391952079303339 H02.0RHINE CR @ HWY 108 BR @ BROOKSIDE WV (LAT 39 19 52N LONG 079 30 33W) Site 105							
AUG 1998							
14...	1920	3.4	7.7	114	18.5	<5.0	32
391958079520739 C26.0L SANDY CR @ HWY 92/14 BR @ EVANSVILLE WV (LAT 39 19 58N LONG 079 52 07W) Site 106							
AUG 1998							
20...	1530	23	5.0	186	18.5	15	2
392212080120339 D22.0CORBIN BRANCH @ HWY 1/1 BR @ SANTIAGO WV (LAT 39 22 12N LONG 080 12 03W) Site 107							
AUG 1998							
20...	1415	.48	8.0	314	22.0	<5.0	72
392258079293139 H03.0LAUREL RN @ HWY 94/2 BR @ TURNER DOUGLAS WV (LAT 39 22 58N LONG 079 29 31W) Site 108							
AUG 1998							
20...	1320	10	5.9	51	19.0	5.0	4
392335080114839 D24.0HUSTEAD FK @ HWY 3/16 BR @ BOOTHSVILLE WV (LAT 39 23 35N LONG 080 11 48W) Site 109							
AUG 1998							
20...	1250	1.7	8.1	285	18.5	<5.0	58
392947080054139 E06.0PRICKETTS CR @ HWY 73 BR @ MEADOWDALE WV (LAT 39 29 47N LONG 080 05 41W) Site 110							
AUG 1998							
20...	0850	3.0	8.1	237	17.0	<5.0	82
393059079483739 E09.0DECKERS CR @ HWY 27 BR @ REEDSVILLE WV (LAT 39 30 59N LONG 079 48 37W) Site 111							
AUG 1998							
20...	0830	7.1	7.2	494	18.5	<5.0	29
393114080232039 E01.0BUFFALO CR @ HWY 1/10 BR @ DEEP VALLEY WV (LAT 39 31 14N LONG 080 23 20W) Site 112							
AUG 1998							
18...	1850	.44	7.7	5	26.0	<5.0	82
393250080023439 E08.0WHITEDAY CR @ HWY 36 BR NR SMITHTOWN WV (LAT 39 32 50N LONG 080 02 34W) Site 113							
AUG 1998							
20...	1045	--	7.6	84	--	<5.0	--

**ANALYSIS OF STREAMFLOW SAMPLES COLLECTED AT SPECIAL-STUDY SITES
ALLEGHENY AND MONONGAHELA RIVER BASIN NAWQA PROJECT**

SYNOPTIC SURVEY OF STREAMS IN THE COAL FIELDS OF THE ALLEGHENY AND MONONGAHELA RIVER BASINS--Continued

WATER QUALITY DATA, WATER YEAR OCTOBER 1997 TO SEPTEMBER 1998

DATE	TIME	DIS- CHARGE, INST. CUBIC FEET PER SECOND (00061)	PH WATER WHOLE FIELD (STAND- ARD UNITS) (00400)	SPE- CIFIC CON- DUCT- ANCE (µS/CM) (00095)	TEMPER- ATURE WATER (DEG C) (00010)	ACIDITY TOTAL HEATED (MG/L AS CAC03) (70508)	ANC WATER UNFLTRD FET FIELD MG/L AS CAC03 (00410)
393308080100339 E04.0PAW PAW CR @ HWY 17 BR @ GRANT TOWN WV (LAT 39 33 08N LONG 080 10 03W) Site 114							
AUG 1998 18...	1400	4.5	8.2	1890	25.0	<5.0	136
393320080212239 E02.0PYLES FK @ HWY 250/5 BR NR METZ WV (LAT 39 33 20N LONG 080 21 22W) Site 115							
AUG 1998 18...	1645	.08	7.9	271	27.0	<5.0	86
393408080045039 E07.0INDIAN CR @ HWY 45/2 BR @ OSGOOD WV (LAT 39 34 08N LONG 080 04 50W) Site 116							
AUG 1998 18...	0925	17	8.1	2660	21.5	<5.0	120
393423080091339 E05.0L PAW PAW CR @ HWY 25 BR @ HOODSVILLE WV (LAT 39 34 23N LONG 080 09 13W) Site 117							
AUG 1998 18...	1200	.94	7.9	388	23.5	<5.0	138
393838079361239 F19.0L SANDY CR @ HWY 3/4 BR NR BRANDONVILLE WV (LAT 39 38 38N LONG 079 36 12W) Site 118							
AUG 1998 20...	1045	7.1	7.5	259	15.0	<5.0	28
394208080180239 G01.0WEST VIRGINIA FK @ HWY 7 BR @ WANNA WV (LAT 39 42 08N LONG 080 18 02W) Site 119							
AUG 1998 15...	1900	.59	8.4	3140	23.5	<5.0	262
394212080152739 G02.0MIRACLE RUN @ HWY 7 BR @ BULA WV (LAT 39 42 12N LONG 080 15 27W) Site 120							
AUG 1998 15...	1700	.84	7.7	1490	25.5	<5.0	138
394227080065739 G03.0DOLLS RUN @ HWY 7 BR NR CORE WV (LAT 39 42 27N LONG 080 06 57W) Site 121							
AUG 1998 15...	1440	.53	8.2	444	22.5	<5.0	138
03070470 MILL RUN NEAR ELLIOTTSVILLE, PA (LAT 39 45 49N LONG 079 39 49W) Site 122							
AUG 1998 18...	1345	4.6	7.2	64	20.0	<5.0	14
03079710 FALL CREEK AT BARRONVALE, PA (LAT 39 57 28N LONG 079 16 48W) Site 123							
AUG 1998 18...	0840	2.7	6.8	47	17.0	<5.0	7
03080000 LAUREL HILL CREEK AT URSINA, PA. (LAT 39 49 13N LONG 079 19 18W) Site 124							
AUG 1998 18...	1000	--	7.6	107	22.0	<5.0	19